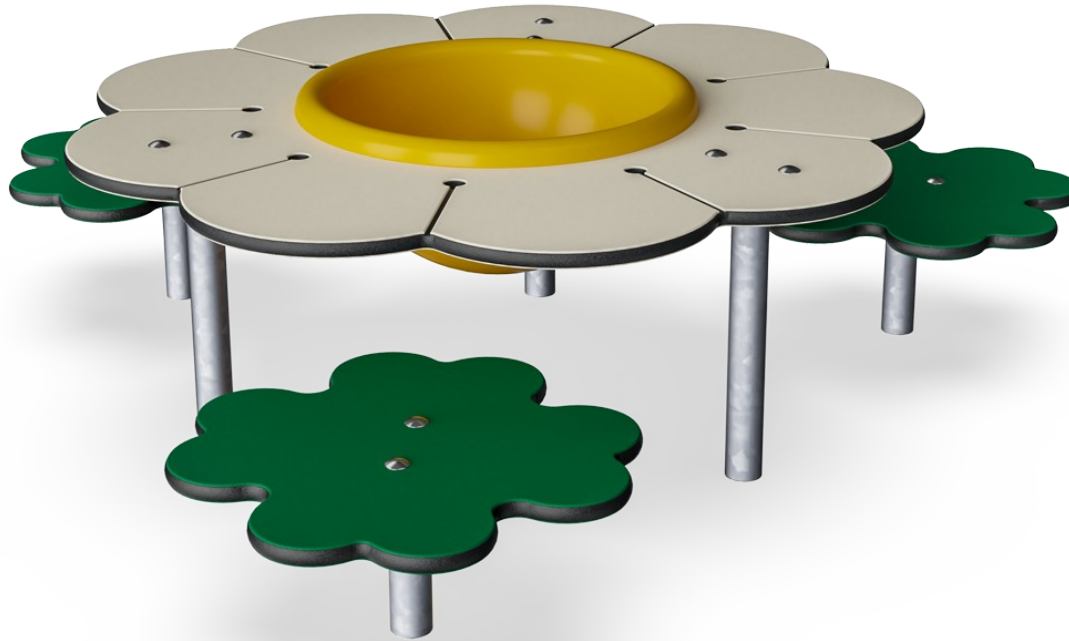



Daisy Desk with Seats

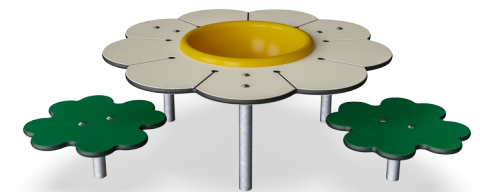
M261



Item no. M26101-3418P	
General Product Information	
Dimensions LxWxH	143x129x40 cm
Age group	6m+
Play capacity (users)	3
Colour options	

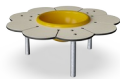
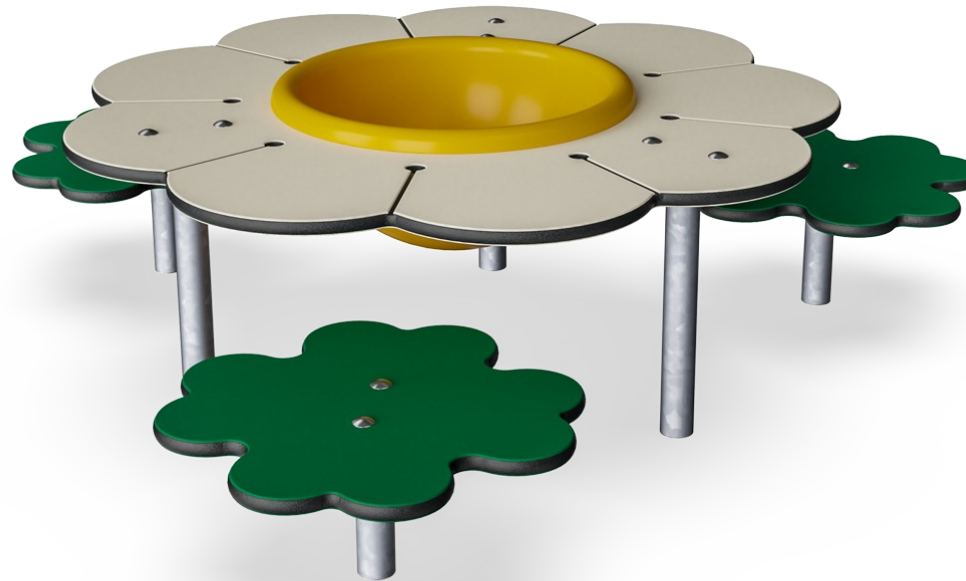


The table combination in this scene is ideal for individual and group activities, conversations and breaks in the playground. Also available with either a yellow plate, sand bowl or as a stand-alone desk.



Daisy Desk with Seats

M261



Splash basin

Social-Emotional: meeting point for cooperation and sharing. **Cognitive:** construction play storage – playing with sand here promotes thinking skills.



Seat

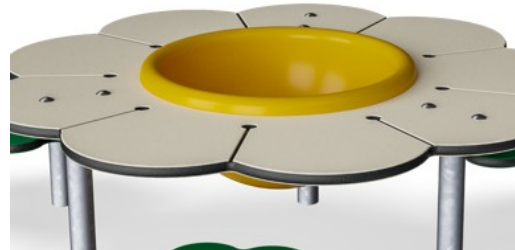
Physical: stepping up, jumping down develops muscle and motor skills. **Social-Emotional:** meeting, sharing and having a break.

Daisy Desk with Seats

M261



Panels of 19mm EcoCore™. EcoCore™ is a highly durable, eco friendly material, which is not only recyclable after use, but also consists of material produced from +95% recycled post consumer material from food packing waste.



Sand basin is made of Polycarbonate (PC). Basin is moulded in one piece to ensure high durability in all climates around the world.



The steel surfaces are hot dip galvanised inside and outside with lead free zinc. The galvanisation has excellent corrosion resistance in outside environments and requires low maintenance.



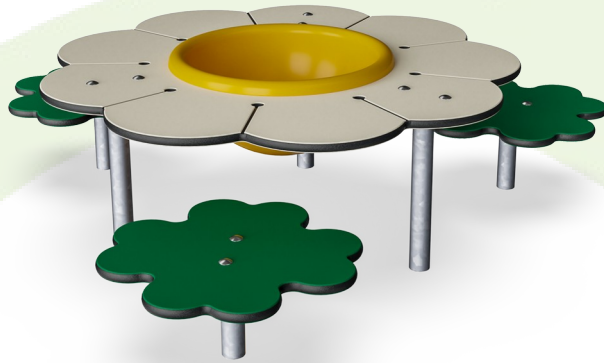
KOMPAN GreenLine versions are designed with ultimate environmentally friendly materials with lowest possible CO2e emission factor such as EcoCore™ panels of +95% post consumer recycled ocean waste.

Item no. M26101-3418P	
Installation Information	
Max. fall height	21 cm
Safety surfacing area	14.8 m ²
Total installation time	2.6
Excavation volume	0.23 m ³
Concrete volume	0.00 m ³
Footing depth (standard)	64 cm
Shipment weight	48 kg
Anchoring options	In-ground ✓ Surface ✓
Warranty Information	
EcoCore HDPE	Lifetime
Hot dip galvanised steel	Lifetime
Spare parts guaranteed	10 years



Sustainability Data

M261



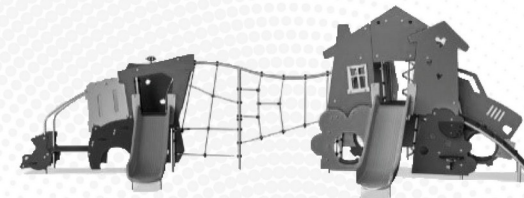
Cradle to Gate A1-A3	Total CO ₂ emission	CO ₂ e/kg	Recycled materials
	kg CO ₂ e	kg CO ₂ e/kg	%
M26101-3418P	90.79	1.93	64.15

The overall framework applied for these factors is the Environmental Product Declaration (EPD), which quantifies "environmental information on the life cycle of a product and enable comparisons between products fulfilling the same function" (ISO, 2006). This follows the structure and applies a Life-Cycle Assessment approach to the entire Product stage from raw material through manufacturing (A1-A3))

Kompan A/S
C.F. Tietgens Boulevard 32C
DK-5220 Odense SØ
Denmark



Verification of CO₂ calculation of: Themed play systems



Data version no. 2023-10-05

The CO₂ calculation and data are in compliance with the principles of a carbon footprint impact according to the GHG protocol (Greenhouse Gas Protocol), Scope 3, cradle to gate related to all individual components in the product category: "Themed play systems" represented by item no.: MSC641100-3717P.

(Scope 3 emissions include emission sources in the upstream and downstream value chain).

Date: 30. October 2023 | Valid until: 30. October 2025

Verified by:

Julie Marie Vejsgaard Larsen, LCA & EPD Consultant

Verification based on report: Validation of CO₂ calculation of 9 categories of Kompan product line, version 1.0, prepared by: Bureau Veritas HSE, Denmark: Julie M. V. Larsen.

Publication date: 30. October 2023

By Bureau Veritas HSE
www.bureauveritas.dk
+45 7731 1000

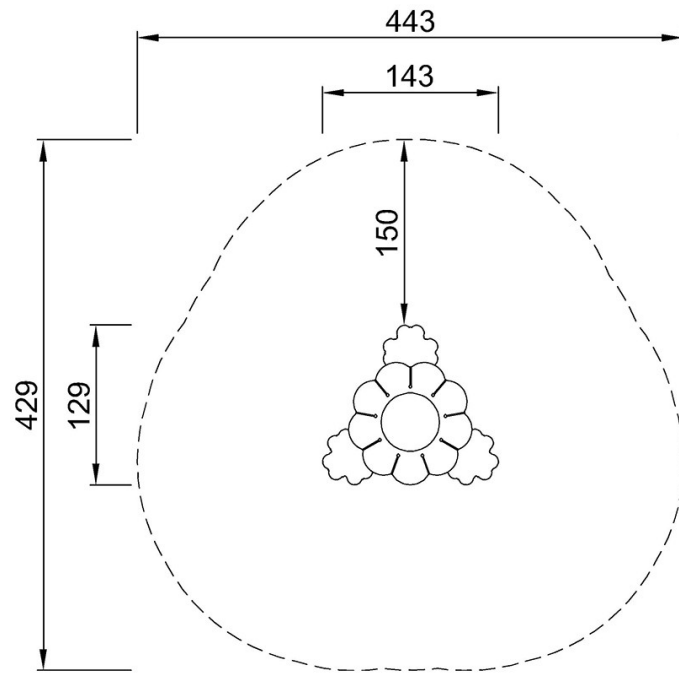


Daisy Desk with Seats

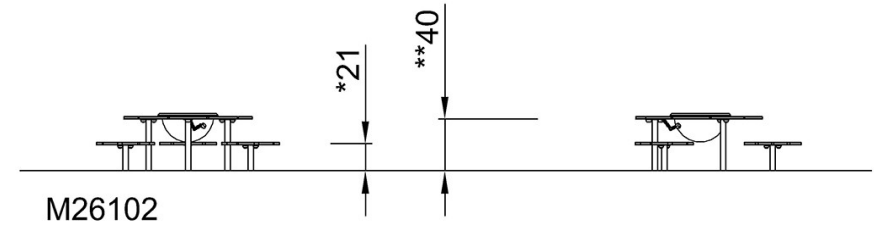
M261

* Max fall height | ** Total height | *** Safety surfacing area

* Max fall height | ** Total height



M26102
*21cm
**40cm
***14.8m²



[Click to see TOP VIEW](#)

[Click to see SIDE VIEW](#)