

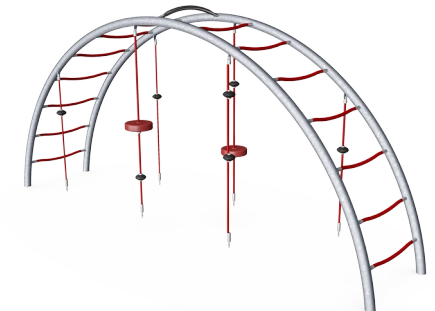
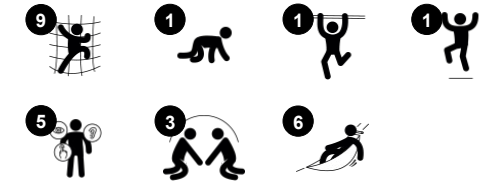


Arch Ladder, 2.0m high

COR20210



Item no. COR202101-0301	
General Product Information	
Dimensions LxWxH	439x105x200 cm
Age group	5+
Play capacity (users)	20
Colour options	 



The Large Arc Ladder is an appealing climbing and meeting structure for the youngest players. The versatile climbing opportunities; up, down, through, and across will attract children to return to play, again and again. The swaying ropes with seats and UFO's invite vertical climbing as well as a swaying rest with friends, seated or standing which stimulates social

interaction. The arc ladder makes a nice climb to the top, where children can get a great view from above. Apart from having great fun exploring play possibilities, children develop their cross-coordination and muscle strength. When climbing and when passing others it trains turn-taking skills and consideration. These varied climbing possibilities make it

possible for both timid and courageous children to experience successful play and participate which is important for positive self-perception.

Arch Ladder, 2.0m high

COR20210



Rope ladder

Physical: the big steps allow for climbing and crawling through, supporting proprioception and spatial awareness and promoting strength. **Social-Emotional:** the big meshes allow more children being seated together, sharing.



Rope with rubber disc

Physical: children develop cross-body coordination and muscle strength when climbing the rope. Their sense of balance is trained when swaying gently. **Social-Emotional:** socialising and turn-taking when deciding who should sit here.



Frame

Physical: develop children's upper body muscles and arm strength when hanging from arms. This is especially important due to sedentary lifestyles and back-pain in children. **Social-Emotional:** develop children's turn-taking skills and empathy when passing others on the top frame.

Arch Ladder, 2.0m high

COR20210



Corocord 16mm ropes are special 'Hercules'-type with galvanised four-stranded steel wires and a steel wire core. Each strand is tightly wrapped with PES yarn, which is melted onto individual strand. The ropes are hard wearing and vandalism resistant and are easy to replace for any given site.



The steel structures are hot-dip galvanised inside and outside with lead free zinc. The galvanisation has excellent corrosion resistance and requires low maintenance.



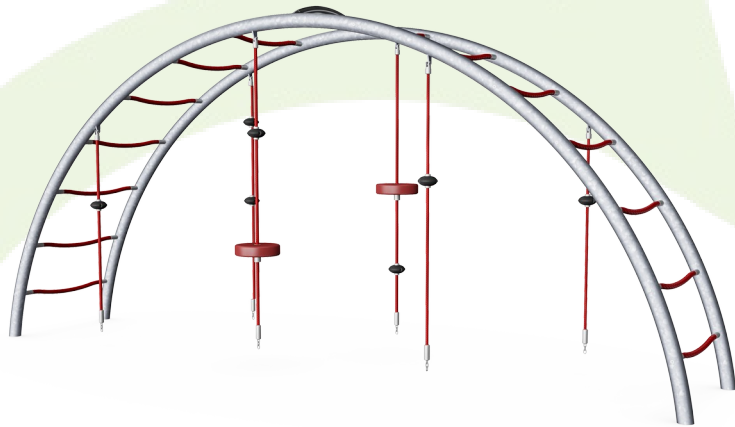
Fully coloured EPDM rubber discs with smooth surface. The moulded EPDM surrounds a hot-dip galvanised steel core that ensures both the stability of the discs and durable fixtures to the rope.

Item no. COR202101-0301	
Installation Information	
Max. fall height	200 cm
Safety surfacing area	28.0 m ²
Total installation time	5.9
Excavation volume	2.38 m ³
Concrete volume	1.70 m ³
Footing depth (standard)	90 cm
Shipment weight	200 kg
Anchoring options	In-ground ✓ Surface ✓
Warranty Information	
Corocord (Hercules) Rope	10 years
EPDM Components	2 years
Galvanised Steel	Lifetime
S-Clamps	10 years
Spare Parts Guarantee	10 years

AS
4685
compliant

Sustainability Data

COR20210



Cradle to Gate A1-A3	Total CO ₂ emission	CO ₂ e/kg	Recycled materials
	kg CO ₂ e	kg CO ₂ e/kg	%
COR202101-0301	507.87	3.03	45.55

The overall framework applied for these factors is the Environmental Product Declaration (EPD), which quantifies "environmental information on the life cycle of a product and enable comparisons between products fulfilling the same function" (ISO, 2006). This follows the structure and applies a Life-Cycle Assessment approach to the entire Product stage from raw material through manufacturing (A1-A3))

Kompan A/S
 C.F. Tietgens Boulevard 32C
 DK-5220 Odense SØ
 Denmark



Verification of CO₂ calculation of: Corocord



Data version no. 2023-10-05

The CO₂ calculation and data are in compliance with the principles of a carbon footprint impact according to the GHG protocol (Greenhouse Gas Protocol), Scope 3, cradle to gate related to all individual components in the product category: "Corocord" represented by item no.: COR314011-1101.

(Scope 3 emissions include emission sources in the upstream and downstream value chain).

Date: 30. October 2023 | Valid until: 30. October 2025

Verified by:

Julie Marie Vejsgaard Larsen, LCA & EPD Consultant

Verification based on report: Validation of CO₂ calculation of 9 categories of Kompan product line, version 1.0, prepared by: Bureau Veritas HSE, Denmark: Julie M. V. Larsen.

Publication date: 30. October 2023

By Bureau Veritas HSE
 www.bureauveritas.dk
 +45 7731 1000

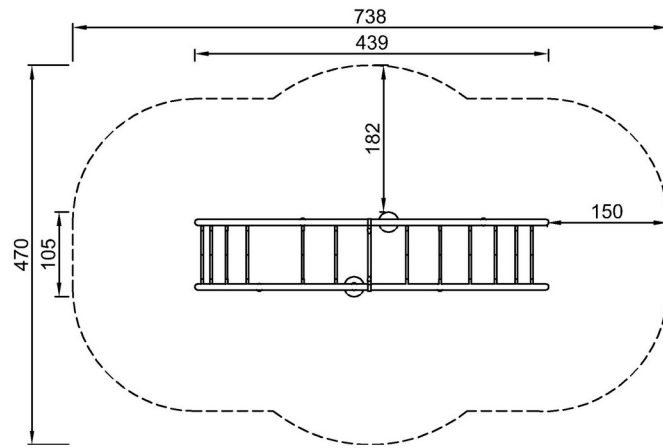


Arch Ladder, 2.0m high

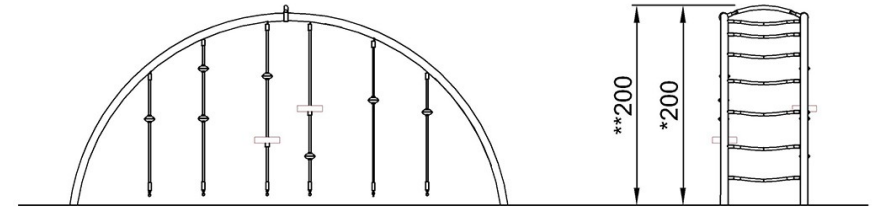
COR20210

* Max fall height | ** Total height | *** Safety surfacing area

* Max fall height | ** Total height



COR202101-xx01
*200cm
**200cm
***28.0m²



COR202101

[Click to see TOP VIEW](#)

[Click to see SIDE VIEW](#)