

LOOP HopOp 500 with Light

TPP29612



Item no. TPP29612-0006

General Product Information

| | |
|-----------------------|---|
| Dimensions LxWxH | 1'8"x1'8"x1'4" |
| Age group | |
| Play capacity (users) | |
| Color options |  |

The luminous disc of the sun is a fascinating natural phenomenon to observe – and it keeps us all alive. HopOp 500 Light results from the desire to combine this evenly suffused glow with a simple piece of furniture for sitting and bouncing. HopOp 500 Light can be positioned in different formations, even combining colors to spark joy and connection – indoors and out.

LOOP HopOp 500 with Light

TPP29612



The Loops modular elements are made of rotation-molded polyethylene (PE) with a 6-7mm thickness. The Loops are UV-resistant, have excellent impact strength, and are usable within a large temperature span.



The product molds are textured through abrasive blasting, enhancing surface friction and reducing slipperiness, ensuring a safer experience.



The Loops come in 10 standard colors, offering various options to personalize your product and ensure a perfect fit for your intended space.

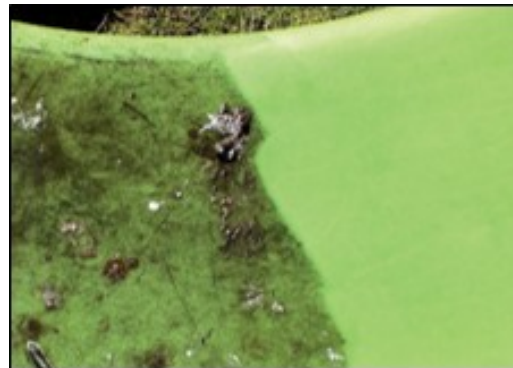
Item no. TPP29612-0006

Installation Information

| | |
|--------------------------|--------------------------|
| Total installation time | 0.0 |
| Excavation volume | 0yd ³ |
| Concrete volume | 0yd ³ |
| Footing depth (standard) | 0'0" |
| Shipment weight | 14lbs |
| Anchoring options | Surface ✓ In-ground ✓ |



The Loops can be anchored to the ground by filling them with water or sand using integrated plugs. Alternatively, they can be secured using surface or ground brackets.



This product withstands most cleaning agents and chemicals and can be cleaned using a high-pressure cleaner. The color can be revived using vinyl cleaner or similar.