


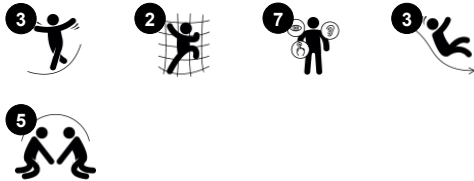


# Sprinter with Roof

PCE105634



Item no. PCE105634-0901	
General Product Information	
Dimensions LxWxH	15'3"x17'8"x10'9"
Age group	2 - 5
Play capacity (users)	13
Color options	  



Wow! The Sprinter will encourage physical as well as social play, the ingredient to helping children and their families to stay and play for longer times. With the many opportunities to climb and to slide, children will develop important physical skills as well as social skills when playing on the Sprinter. Climbing supports cross-coordination, which again

supports the brain's readiness for reading. The open spaces at elevation will also encourage children to socialize. The different options for sliding to the ground adds to the thrill. Sliding develops the child's trunk stability and sense of balance. These are important skills for moving with confidence. The double slide invites social play and inclusive play. Sliding with friends

stimulate cooperation and turn-taking. Children will be delighted by the Sprinter, which encourages healthy outdoor play.



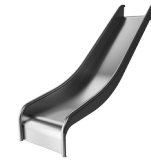
# Sprinter with Roof

PCE105634



## Double slide

**Physical:** sliding develops spatial awareness and a sense of balance. Furthermore, the core muscles are trained when sitting upright going down. **Social-Emotional:** invites socializing, supports parent-child and peer-to-peer play. **Cognitive:** young children train their understanding of space, speed and distances when sliding down quickly.



## Slide

**Physical:** sliding develops spatial awareness and a sense of balance. Furthermore, the core muscles are trained when sitting upright going down. **Social-Emotional:** empathy stimulated by turn-taking.



## Bench

**Social-Emotional:** invites socializing and cooperation. Allows for a break with friends.



## Climbing pole

**Physical:** cross coordination and muscle strength are trained. **Social-Emotional:** turn-taking and cooperation.



## Accessible stairway

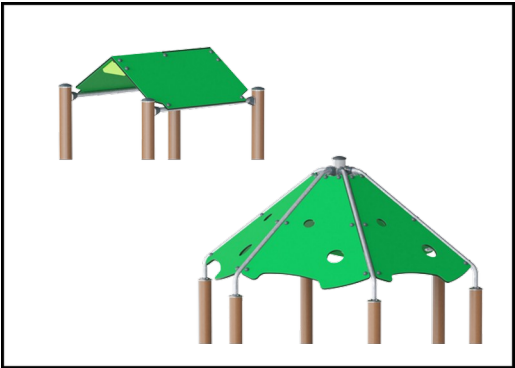
**Physical:** climbing the accessible stairway is for all and supports cross coordination as well as arm and leg muscles. For young children, walking stairs and alternating feet is developed. **Social-Emotional:** room for active breaks and adult helpers. An inclusive space.

# Sprinter with Roof

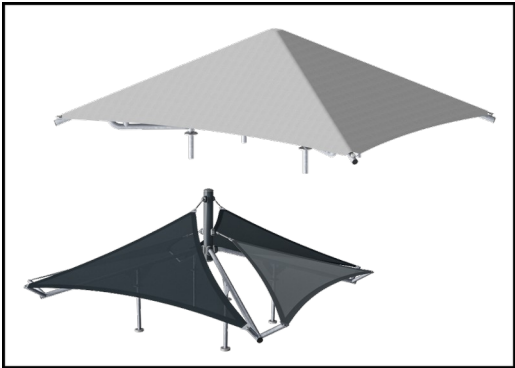
PCE105634



Panels of 19mm EcoCore™. EcoCore™ is a highly durable, eco friendly material, which is not only recyclable after use, but also consists of a core produced from 100% recycled material.



The roofs are made of KOMPAN EcoCore™ panels and supported by hot dip galvanized steel pipes.



Shade sails of commercial 95 high density PE knitted specially for sunshade structures. The sails are treated with UV stabilizers to ensure a long lifetime. The sails are supported by a hot dip galvanized steel frame. Closed sail equipped with an easy take down system.

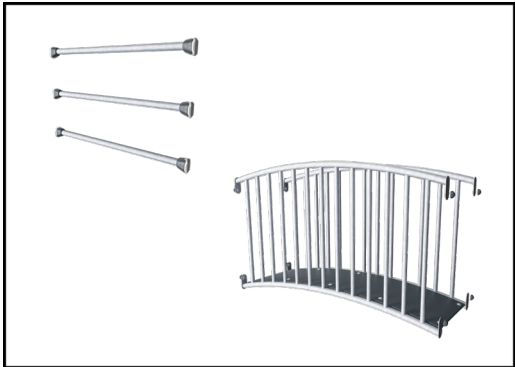
Item no. PCE105634-0901	
Installation Information	
Max. fall height	3'10"
Safety surfacing area	554ft²
Total installation time	16.5
Excavation volume	0.88yd³
Concrete volume	0yd³
Footing depth (standard)	2'11"
Shipment weight	1296lbs
Anchoring options	Surface ✓ In-ground ✓
Warranty Information	
EcoCore HDPE	Lifetime
Hollow PE Parts	10 Years
Post	10 Years
PP Decks	10 Years
Spare Parts Availability	10 Years



The main posts are made of high quality pregalvanized steel with powder coated top finish. Post tops are closed with caps of UV stabilized nylon (PA6). The grey colored molded decks are made of 75% post-consumer waste PP material with a non-skid pattern and texture surface. All decks are supported by unique designed low-carbon aluminum profiles with multiple attachment options.



The slides are available in either molded PE in different colors or in full stainless steel AISI304 t= 2mm.



Steel activities are hot dip galvanized and optional with a powder coated top finish.

Elevated activities	Accessible elevated activities	Accessible ground level activities	Accessible ground level play types
Present			
Required			

# Sustainability Data

PCE105634



Cradle to Gate A1-A3	Total CO <sub>2</sub> emission	CO <sub>2</sub> e/kg	Recycled materials
	kg CO <sub>2</sub> e	kg CO <sub>2</sub> e/kg	%
PCE105634-0901	817.71	1.78	62.66

The overall framework applied for these factors is the Environmental Product Declaration (EPD), which quantifies "environmental information on the life cycle of a product and enable comparisons between products fulfilling the same function" (ISO, 2006). This follows the structure and applies a Life-Cycle Assessment approach to the entire Product stage from raw material through manufacturing (A1-A3))

## Kompan A/S

C.F. Tietgens Boulevard 32C  
DK-5220 Odense SØ  
Denmark



## Verification of CO<sub>2</sub> calculation of: Play systems



Data version no. 2023-10-05

The CO<sub>2</sub> calculation and data are in compliance with the principles of a carbon footprint impact according to the GHG protocol (Greenhouse Gas Protocol), Scope 3, cradle to gate related to all individual components in the product category: "Play systems" represented by item no.: PCM200321-0950.

(Scope 3 emissions include emission sources in the upstream and downstream value chain).

**Date: 30. October 2023 | Valid until: 30. October 2025**

**Verified by:**

Julie Marie Vejsgaard Larsen, LCA & EPD Consultant

Verification based on report: Validation of CO<sub>2</sub> calculation of 9 categories of Kompan product line, version 1.0, prepared by: Bureau Veritas HSE, Denmark: Julie M. V. Larsen.

**Publication date: 30. October 2023**

By Bureau Veritas HSE  
www.bureauveritas.dk  
+45 7731 1000

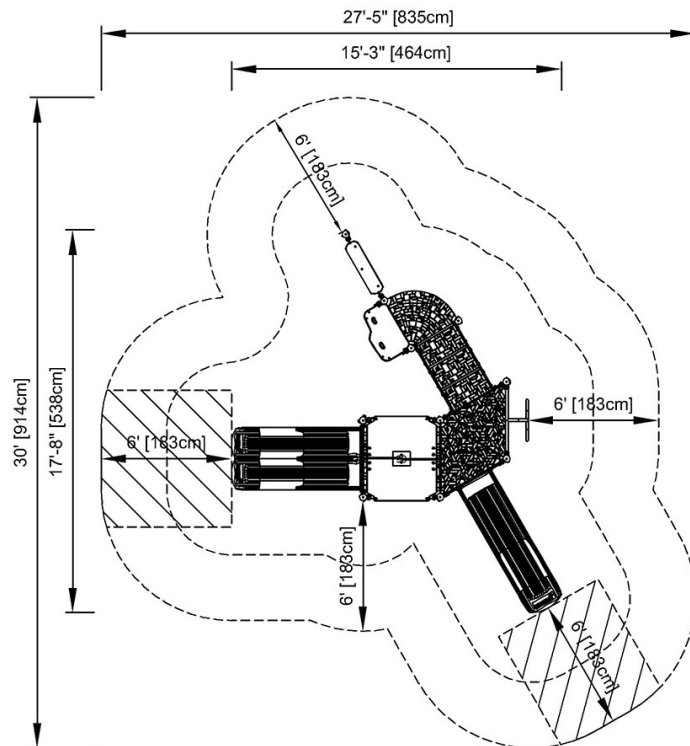


# Sprinter with Roof

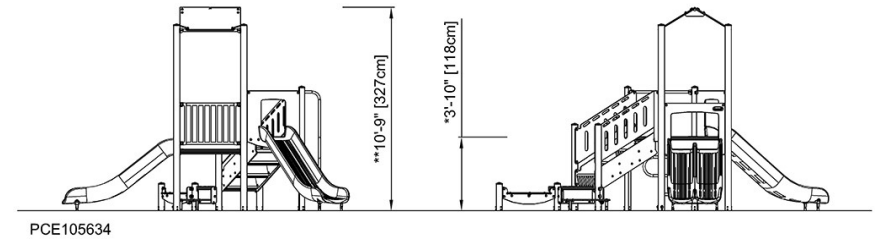
PCE105634

\* Max fall height | \*\* Total height | \*\*\* Safety surfacing area

\* Max fall height | \*\* Total height



PCE105634  
\* 3'-10" / 118cm  
\*\* 10'-9" / 327cm  
\*\*\* 554.2ft<sup>2</sup> / 51.5m<sup>2</sup>



[Click to see TOP VIEW](#)

[Click to see SIDE VIEW](#)