

Track Ride Tower

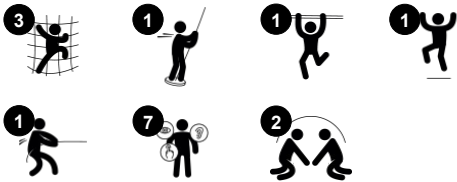
PCM111531



Item no. PCM111531-0902

General Product Information

| | |
|-----------------------|------------------|
| Dimensions LxWxH | 20'10"x9'3"x7'7" |
| Age group | 5 - 12 |
| Play capacity (users) | 5 |
| Color options | |



The Track Ride Tower is a great play item that responds to the children's movement and urge for a thrill. This is the recipe for play success and will make children return for play again and again. The track ride glides down from the tower. Trained users will be able to flip their legs up to the top beam at the end and push themselves all the way back to the platform.

This trains muscles, proprioception, and timing, all-important abilities in sports and life. To other users, jumping off at the end will train bone density. The handhold allows them to hang from the glider. The children train their arm, leg, and core muscles. These activities develop their social-emotional skills, training turn-taking, and empathy when helping others to succeed

providing thrilling, fun play that trains the school-age child's social and physical life skills.



Track Ride Tower

PCM111531



Track Ride

Physical: trains arm and core muscles.

Supports improved bone density when jumping from the handholds and motor skills like agility, balance and coordination. **Social-**

Emotional: cooperation, consideration, turn-taking, risk-taking, self-confidence.



Climbing net

Physical: supports physical strength and cross-body coordination, which impacts coordination of the right and left parts of brain, fundamental for other skills such as the ability to read.



Pipe ladder

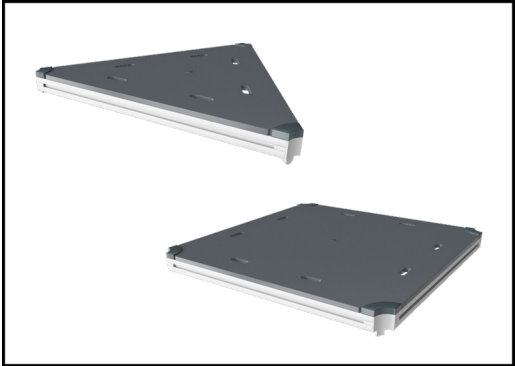
Physical: cross coordination and eye-hand coordination are supported when children climb the ladder. The climbing also supports leg and arm muscles. **Social-Emotional:** learning about taking turns and cooperation.

Track Ride Tower

PCM111531



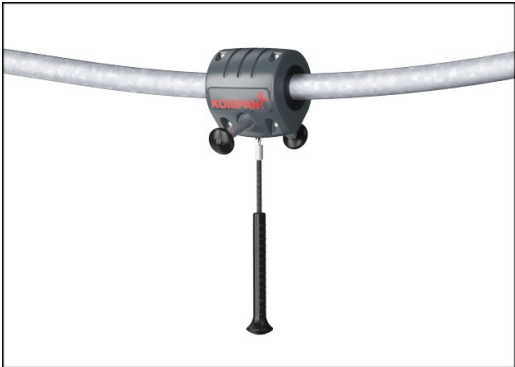
Panels of 19mm EcoCore™. EcoCore™ is a highly durable, eco friendly material, which is not only recyclable after use, but also consists of a core produced from 100% recycled material.



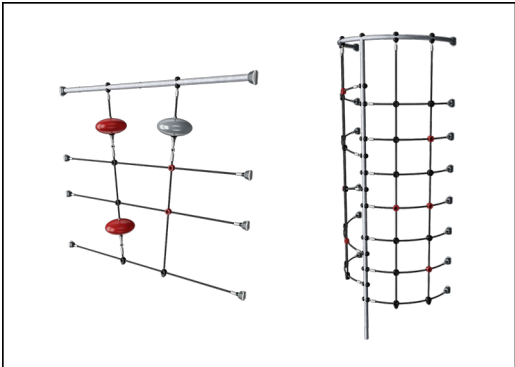
All decks are supported by uniquely designed low-carbon aluminum profiles with multiple attachment options. The grey-colored molded decks are made of 75% post-consumer ocean waste PP material with a non-skid pattern and texture surface.



Main posts with hot dip galvanized steel footing are available in different materials: Pressure impregnated pine wood posts. Pre-galvanized inside and outside with powder coated top finish steel posts. Lead free aluminum with color anodized top finish. Greenline TexMade posts of 95% post-consumer recycled PE and textile waste.



The hang-on puller is designed with at welded steel core and covered with low-density PE housing. The two hot dip galvanized steel handles are angled to provide best possible ergonomic while gliding. The wheels of the puller are made of low noise TPU and installed with sealed ball bearings.



Ropes are made of UV-stabilized PES rope strands with inner steel cable reinforcement. The polyester wrapping is inductively melted onto each strand to ensure excellent wear and tear resistance.

| | |
|--------------------------|--------------------------|
| Item no. PCM111531-0902 | |
| Installation Information | |
| Max. fall height | 6'6" |
| Safety surfacing area | 512ft² |
| Total installation time | 10.1 |
| Excavation volume | 0.35yd³ |
| Concrete volume | 0.07yd³ |
| Footing depth (standard) | 2'9" |
| Shipment weight | 707lbs |
| Anchoring options | In-ground ✓ Surface ✓ |
| Warranty Information | |
| EcoCore HDPE | Lifetime |
| Movable parts | 2 Years |
| PP Decks | 10 Years |
| Ropes & nets | 10 Years |
| Spare Parts Availability | 10 Years |

| Elevated activities 4 | Accessible elevated activities | Accessible ground level activities | Accessible ground level play types |
|-----------------------|--------------------------------|------------------------------------|------------------------------------|
| Present | 0 | 0 | 0 |
| Required | 2 | 1 | 1 |

**ASTM
F1487**
compliant

Sustainability Data

PCM111531



| Cradle to Gate A1-A3 | Total CO ₂ emission | CO ₂ e/kg | Recycled materials |
|----------------------|--------------------------------|-------------------------|--------------------|
| | kg CO ₂ e | kg CO ₂ e/kg | % |
| PCM111531-0902 | 710.82 | 2.80 | 50.57 |

The overall framework applied for these factors is the Environmental Product Declaration (EPD), which quantifies "environmental information on the life cycle of a product and enable comparisons between products fulfilling the same function" (ISO, 2006). This follows the structure and applies a Life-Cycle Assessment approach to the entire Product stage from raw material through manufacturing (A1-A3))

Kompan A/S
C.F. Tietgens Boulevard 32C
DK-5220 Odense SØ
Denmark



Verification of CO₂ calculation of: Play systems



Data version no. 2023-10-05

The CO₂ calculation and data are in compliance with the principles of a carbon footprint impact according to the GHG protocol (Greenhouse Gas Protocol), Scope 3, cradle to gate related to all individual components in the product category: "Play systems" represented by item no.: PCM200321-0950.

(Scope 3 emissions include emission sources in the upstream and downstream value chain).

Date: 30. October 2023 | Valid until: 30. October 2025
Verified by:

Julie Marie Vejsgaard Larsen, LCA & EPD Consultant

Verification based on report: Validation of CO₂ calculation of 9 categories of Kompan product line, version 1.0, prepared by: Bureau Veritas HSE, Denmark: Julie M. V. Larsen.

Publication date: 30. October 2023

By Bureau Veritas HSE
www.bureauveritas.dk
+45 7731 1000



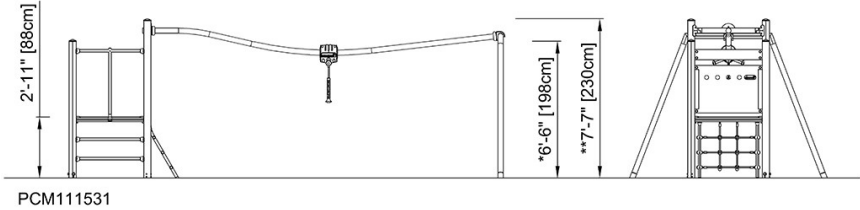
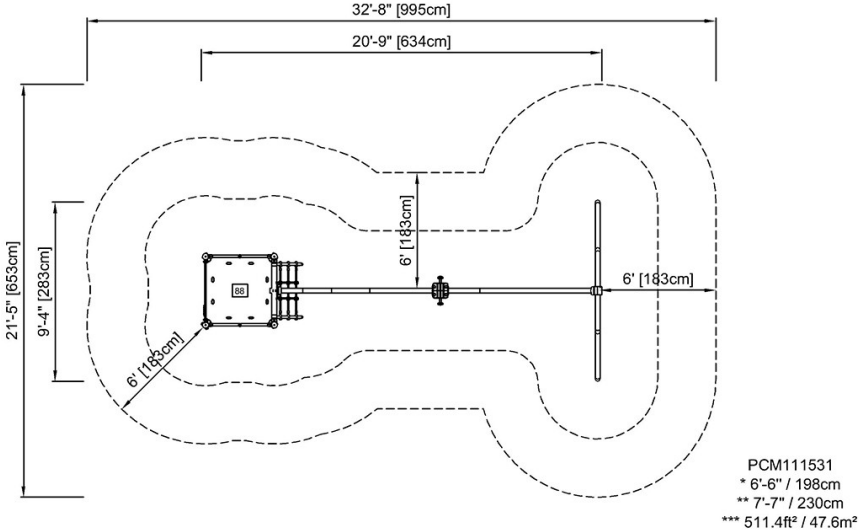
Track Ride Tower

PCM111531



* Max fall height | ** Total height | *** Safety surfacing area

* Max fall height | ** Total height



[Click to see TOP VIEW](#)

[Click to see SIDE VIEW](#)