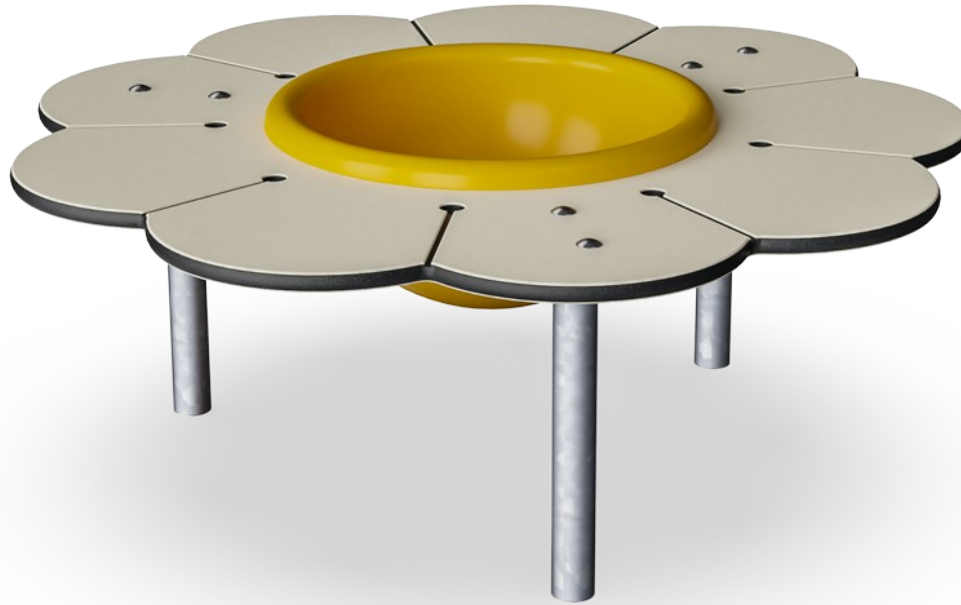


Daisy Desk with Bowl

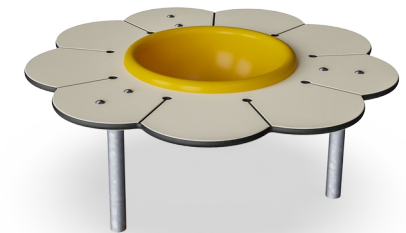
M26003



Item no. M26003-3418P

General Product Information

Dimensions LxWxH	99x99x38 cm
Age group	6m+
Play capacity (users)	3
Colour options	

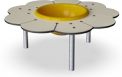


The Daisy desk with sand bowl in middle is a wonderful sand play table in which the yellow bowl functions as a sand or water or toys container. Please note that the sand bowl can be taken up and emptied for water. It is chained to the table to avoid it going missing.



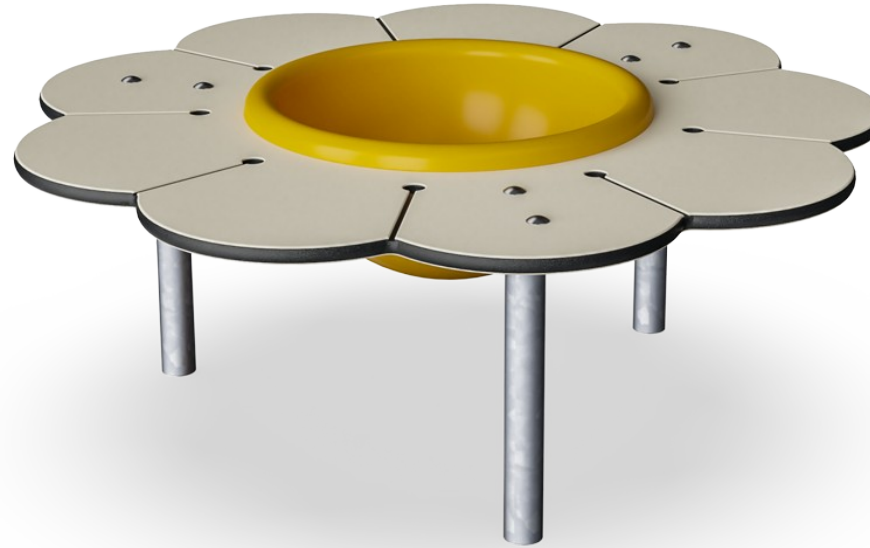
Daisy Desk with Bowl

M26003



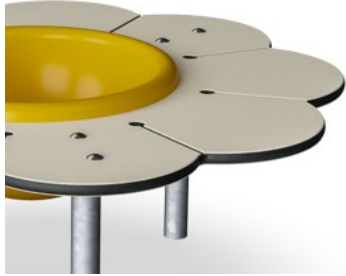
Splash basin

Social-Emotional: meeting point for cooperation and sharing. **Cognitive:** construction play storage – playing with sand here promotes thinking skills.



Daisy Desk with Bowl

M26003



Panels of 19mm EcoCore™. EcoCore™ is a highly durable, eco friendly material, which is not only recyclable after use, but also consists of material produced from +95% recycled post consumer material from food packing waste.



Sand basin is made of Polycarbonate (PC). Basin is moulded in one piece to ensure high durability in all climates around the world.



The steel surfaces are hot dip galvanised inside and outside with lead free zinc. The galvanisation has excellent corrosion resistance in outside environments and requires low maintenance.

Item no. M26003-3418P

Installation Information

Max. fall height	0 cm
Safety surfacing area	12.5 m ²
Total installation time	1.8
Excavation volume	0.10 m ³
Concrete volume	0.00 m ³
Footing depth (standard)	64 cm
Shipment weight	28 kg
Anchoring options	In-ground ✓ Surface ✓

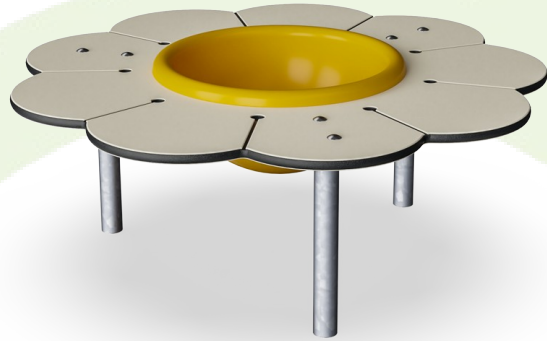
Warranty Information

EcoCore HDPE	Lifetime
Hot dip galvanised steel	Lifetime
Spare parts guaranteed	10 years



Sustainability Data

M26003



Cradle to Gate A1-A3	Total CO ₂ emission	CO ₂ e/kg	Recycled materials
	kg CO ₂ e	kg CO ₂ e/kg	%
M26003-3418P	54.82	2.02	65.42

The overall framework applied for these factors is the Environmental Product Declaration (EPD), which quantifies "environmental information on the life cycle of a product and enable comparisons between products fulfilling the same function" (ISO, 2006). This follows the structure and applies a Life-Cycle Assessment approach to the entire Product stage from raw material through manufacturing (A1-A3))

Kompan A/S
C.F. Tietgens Boulevard 32C
DK-5220 Odense SØ
Denmark



Verification of CO₂ calculation of: Themed play systems



Data version no. 2023-10-05

The CO₂ calculation and data are in compliance with the principles of a carbon footprint impact according to the GHG protocol (Greenhouse Gas Protocol), Scope 3, cradle to gate related to all individual components in the product category: "Themed play systems" represented by item no.: MSC641100-3717P.

(Scope 3 emissions include emission sources in the upstream and downstream value chain).

Date: 30. October 2023 | Valid until: 30. October 2025

Verified by:

Julie Marie Vejsgaard Larsen, LCA & EPD Consultant

Verification based on report: Validation of CO₂ calculation of 9 categories of Kompan product line, version 1.0, prepared by: Bureau Veritas HSE, Denmark: Julie M. V. Larsen.

Publication date: 30. October 2023

By Bureau Veritas HSE
www.bureauveritas.dk
+45 7731 1000

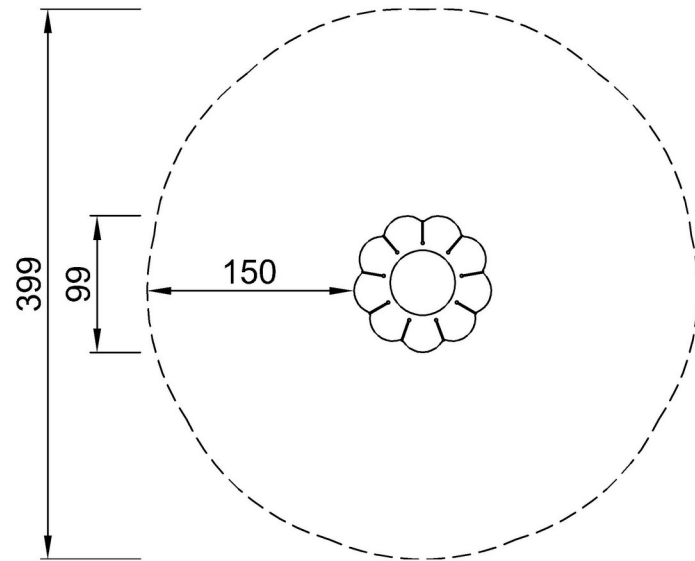


Daisy Desk with Bowl

M26003

* Max fall height | ** Total height | *** Safety surfacing area

* Max fall height | ** Total height



[Click to see TOP VIEW](#)

[Click to see SIDE VIEW](#)