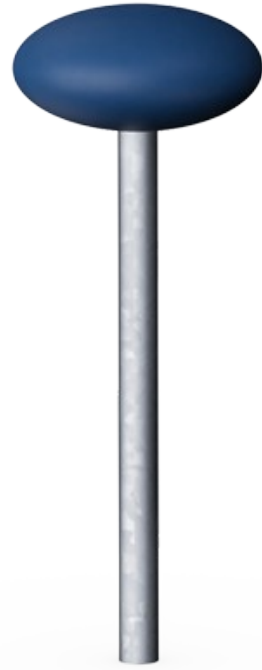


# Grasshopper

FRE3044



Item no. FRE3044-3517	
<b>General Product Information</b>	
Dimensions LxWxH	30x30x80 cm
Age group	3+
Play capacity (users)	-
Color options	●



The pole with rounded top seat offers a playful way to sit and watch the games in multisport pitch but can also as stand alone or in combination with other agility products function for outdoor training exercises.

# Grasshopper

FRE3044



The top seat is 15 cm high and has a diameter of 30. cm. The top seat is made of PE and has a fine structure which makes it comfortable for the hands.



The tube of the Grasshopper is made of a Ø48,3 x 2,9mm, hot dip galvanized steel tube. The top seat is connected with a M12 bolt and covered by a PE top cap.

Item no. FRE3044-3517

## Installation Information

Max. fall height	80 cm
Safety surfacing area	8.6 m <sup>2</sup>
Total installation time	0.3
Excavation volume	0.20 m <sup>3</sup>
Concrete volume	0.00 m <sup>3</sup>
Footing depth (standard)	80 cm
Shipment weight	14 kg
Anchoring options	In-ground ✓

## Warranty Information

HDG post	Lifetime
Hollow PE parts	10 years
Spare parts guaranteed	10 years



# Sustainability Data

FRE3044



Cradle to Gate A1-A3	Total CO <sub>2</sub> emission	CO <sub>2</sub> e/kg	Recycled materials
	kg CO <sub>2</sub> e	kg CO <sub>2</sub> e/kg	%
<b>FRE3044-3517</b>	26.58	2.52	48.44

The overall framework applied for these factors is the Environmental Product Declaration (EPD), which quantifies "environmental information on the life cycle of a product and enable comparisons between products fulfilling the same function" (ISO, 2006). This follows the structure and applies a Life-Cycle Assessment approach to the entire Product stage from raw material through manufacturing (A1-A3))

**Kompan A/S**  
 C.F. Tietgens Boulevard 32C  
 DK-5220 Odense SØ  
 Denmark



## Verification of CO<sub>2</sub> calculation of: Sport



Data version no. 2023-10-05

The CO<sub>2</sub> calculation and data are in compliance with the principles of a carbon footprint impact according to the GHG protocol (Greenhouse Gas Protocol), Scope 3, cradle to gate related to all individual components in the product category: "Sport" represented by item no.: FRE600202-0901.

(Scope 3 emissions include emission sources in the upstream and downstream value chain).

**Date: 30. October 2023 | Valid until: 30. October 2025**

Verified by:

Julie Marie Vejsgaard Larsen, LCA & EPD Consultant

Verification based on report: Validation of CO<sub>2</sub> calculation of 9 categories of Kompan product line, version 1.0, prepared by: Bureau Veritas HSE, Denmark: Julie M. V. Larsen.

**Publication date: 30. October 2023**

By Bureau Veritas HSE  
 www.bureauveritas.dk  
 +45 7731 1000

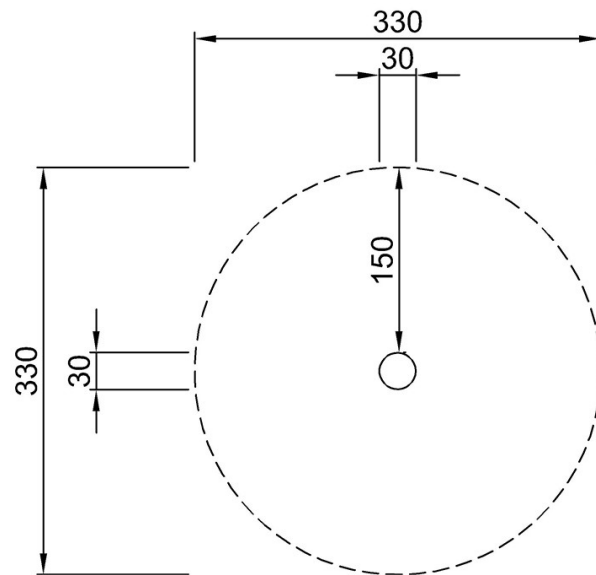


# Grasshopper

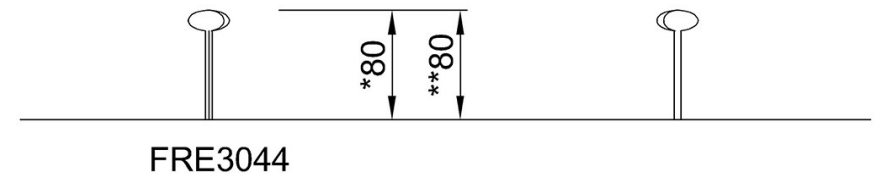
FRE3044

\* Max fall height | \*\* Total height | \*\*\* Safety surfacing area

\* Max fall height | \*\* Total height



FRE3044-Single  
\*80cm  
\*\*80cm  
\*\*\*8.6m<sup>2</sup>



FRE3044

[Click to see TOP VIEW](#)

[Click to see SIDE VIEW](#)