

Double Mega Deck

PCM200432

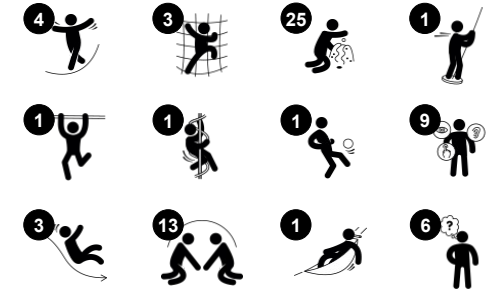
KOMPAN
Let's play



Item no. PCM200432-0950

General Product Information

Dimensions LxWxH	702x505x320 cm
Age group	2+
Play capacity (users)	37
Color options	



유아들을 위한 신나는 탐험 공간, Double Mega Deck

튼튼하고 재미있는 Double Mega Deck 는 유아들이 계속해서 찾고 싶어지는 놀이터입니다.

지면에는 다양한 청각 및 촉각 놀이 패널이 마련되어 있어 아이들의 논리적 사고력과 창의력을 자극합니다. 뮤직 패널에서는 튜브를 손바닥이나 손가락으로 두드려 작은 멜로디를 만들 수 있으며, 책상 놀이 공간에서는 역할

놀이를 통해 언어 능력과 협상력을 자연스럽게 기를 수 있습니다.

U-네트는 모든 아이들이 즐길 수 있도록 설계된 포용적인 놀이 요소로, 아이들은 이곳에서 오르거나 앉거나 누워서 흔들리는 경험을 할 수 있습니다. 이를 통해 공간 인식 능력을 향상시킬 수 있습니다.

넓은 플랫폼에서는 컬러 클라이머를 타고 회전하며 짜릿하게 내려올 수 있으며, 더블 슬라이드가 있어 보호자와 함께 놀이를 즐길

수도 있습니다.

또한, 집 모양의 플랫폼에는 다양한 촉각 요소가 포함되어 있어 아이들이 직접 만지고 탐색하면서 논리적 사고 능력을 키울 수 있습니다.

Double Mega Deck 는 단순한 놀이를 넘어, 아이들이 즐겁게 놀면서 중요한 삶의 기술까지 배울 수 있는 최고의 공간입니다.



Double Mega Deck

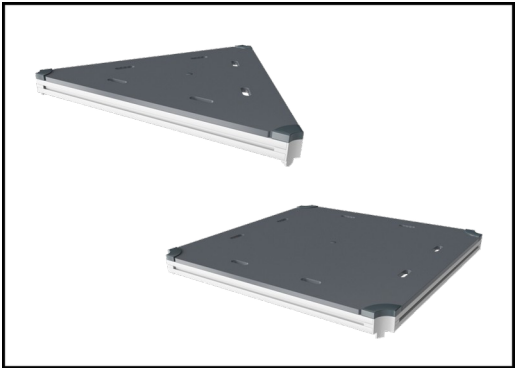
PCM200432



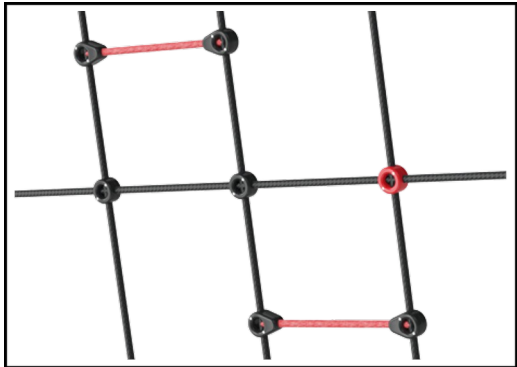
Panels of 19mm EcoCore™. EcoCore™ is a highly durable, eco friendly material, which is not only recyclable after use, but also consists of material produced from +95% recycled post consumer material from food packing waste.



Main posts with hot dip galvanized steel footing are available in different materials: Pressure impregnated pine wood posts. Pre-galvanized inside and outside with powder coated top finish steel posts. Lead free aluminum with color anodized top finish. Greenline TexMade posts of 95% post-consumer recycled PE and textile waste.



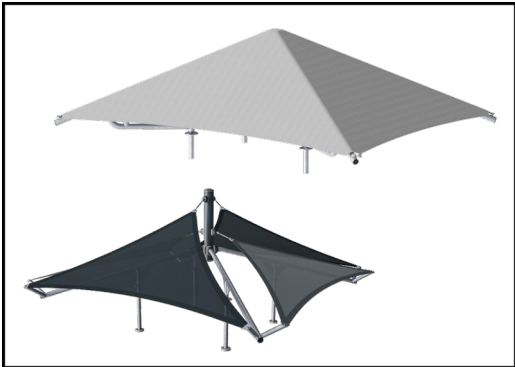
All decks are supported by unique designed low-carbon aluminum profiles with multiple attachment options. The grey colored molded decks are made of 75% post-consumer waste PP material with a non-skid pattern and texture surface.



Ropes of UV-stabilized PES rope strands with inner steel cable reinforcement. The polyester yarn is made from +95% post-consumer materials and is inductively melted onto each strand.



Wood version of FSC®-certified (FSC®C004450) pine wood with pressure impregnated base treatment and brown painted top finish. Vertical boards and top ends protected by a unique aluminum profile for high outdoor durability.



Shade sails of commercial 95 high density PE knitted specially for sunshade structures. The sails are treated with UV stabilizers to ensure a long lifetime. The sails are supported by a hot dip galvanized steel frame. Closed sail equipped with an easy take down system.

Item no. PCM200432-0950	
Installation Information	
Max. fall height	204 cm
Safety surfacing area	52.1 m²
Total installation time	32.7
Excavation volume	0.98 m³
Concrete volume	0.07 m³
Footing depth (standard)	90 cm
Shipment weight	1,330 kg
Anchoring options	Surface ✓ In-ground ✓
Warranty Information	
EcoCore HDPE	Lifetime
Post	10 years
PP Decks	10 years
Ropes & nets	10 years
Spare parts guaranteed	10 years

Sustainability Data

PCM200432



Cradle to Gate A1-A3	Total CO ₂ emission	CO ₂ e/kg	Recycled materials
	kg CO ₂ e	kg CO ₂ e/kg	%
PCM200432-0950	1,463.79	1.59	71.41
PCM200432-0901	1,606.93	1.92	65.62

The overall framework applied for these factors is the Environmental Product Declaration (EPD), which quantifies "environmental information on the life cycle of a product and enable comparisons between products fulfilling the same function" (ISO, 2006). This follows the structure and applies a Life-Cycle Assessment approach to the entire Product stage from raw material through manufacturing (A1-A3))

Kompan A/S

C.F. Tietgens Boulevard 32C
DK-5220 Odense SØ
Denmark



Verification of CO₂ calculation of: Play systems



Data version no. 2023-10-05

The CO₂ calculation and data are in compliance with the principles of a carbon footprint impact according to the GHG protocol (Greenhouse Gas Protocol), Scope 3, cradle to gate related to all individual components in the product category: "Play systems" represented by item no.: PCM200321-0950.

(Scope 3 emissions include emission sources in the upstream and downstream value chain).

Date: 30. October 2023 | Valid until: 30. October 2025

Verified by:

Julie Marie Vejsgaard Larsen, LCA & EPD Consultant

Verification based on report: Validation of CO₂ calculation of 9 categories of Kompan product line, version 1.0, prepared by: Bureau Veritas HSE, Denmark: Julie M. V. Larsen.

Publication date: 30. October 2023

By Bureau Veritas HSE
www.bureauveritas.dk
+45 7731 1000

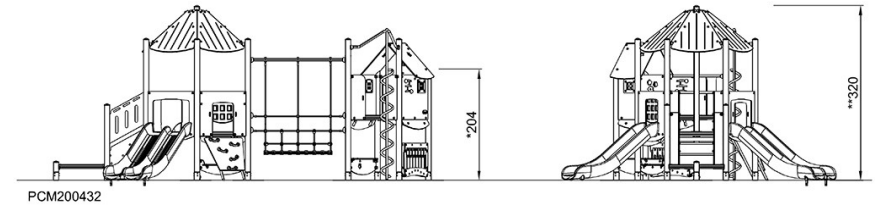
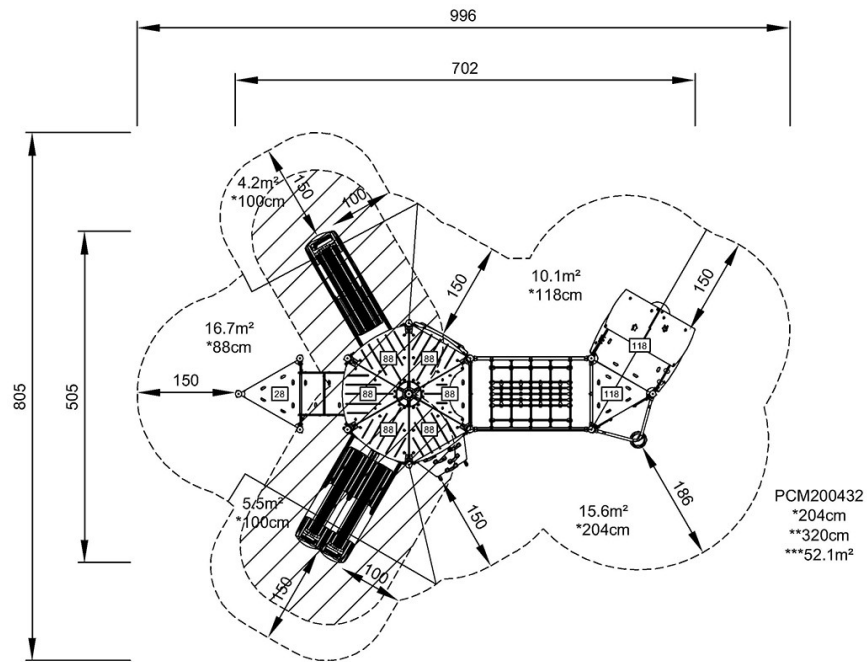


Double Mega Deck

PCM200432

* Max fall height | ** Total height | *** Safety surfacing area

* Max fall height | ** Total height



[Click to see TOP VIEW](#)

[Click to see SIDE VIEW](#)