

Triple Tower with Net

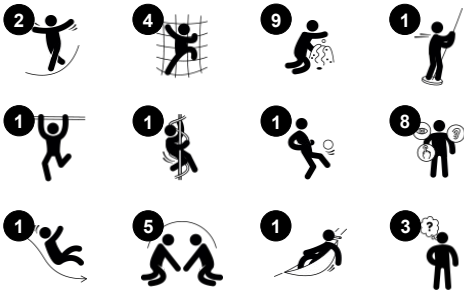
PCM310331



Item no. PCM310331-0951

General Product Information

Dimensions LxWxH 23'7"x15'5"x13'6"
Age group 5 - 12
Play capacity (users) 27
Color options



The amount of play value in the Triple Tower with Net will attract children to play again and again. Offering both physical and social play the varied climbing nets and accessible stairway offer easy and hard climbs. The big net has pods for a break and socializing. From the towers, a slide or a curly climber takes children back towards the ground. The thrill of

gliding through the air when sliding or rotating additionally trains the child's senses of balance and space. These are foundational in navigating the body confidently through the world. Under the platforms, a puzzle invites a social break where children can communicate and train turn-taking skills.

Triple Tower with Net

PCM310331



Accessible stairway

Physical: climbing the accessible stairway is for all and supports cross coordination as well as arm and leg muscles. For young children, walking stairs and alternating feet is developed. **Social-Emotional:** room for active breaks and adult helpers. An inclusive space.



Curved slide

Physical: sliding develops spatial awareness and a sense of balance. Furthermore, the core muscles are trained when sitting upright going down. **Social-Emotional:** empathy stimulated by turn-taking.



Tower net

Physical: the children have quick access up the horizontal rungs, and a slower climb up the sloping rungs. The net can be climbed from both sides, levelling the challenge of accessing the platform. Cross coordination and sense of space is supported, as well as arm and leg muscles. **Social-Emotional:** the two-sided net allows for social interaction. The size invites socializing. **Cognitive:** logical thinking when planning how to best enter the platform from the net.



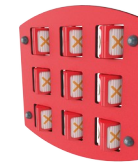
Climbing net with 3 UFOs

Physical: cross coordination, spatial awareness and muscle strength are trained when climbing up and through the net. **Social-Emotional:** the UFOs and the big net meshes add meeting points for socializing.



Curly climber

Physical: coordination and proprioception are supported when placing arms and legs correctly for going down. Sense of balance when rotating. Arm muscles for holding tight. **Social-Emotional:** empathy stimulated by turn-taking. **Cognitive:** logical thinking when placing arms and legs right for rotating downward.



Tic-tac-toe panel

Social-Emotional: stimulates communication and turn-taking skills. **Cognitive:** support rules understanding, strategic thinking. **Creative:** leaving marks when tumblers are left in new positions.

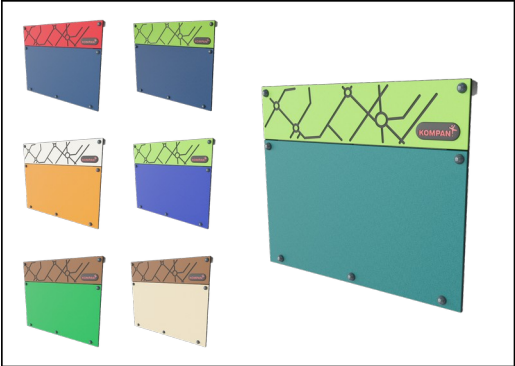


Rapella

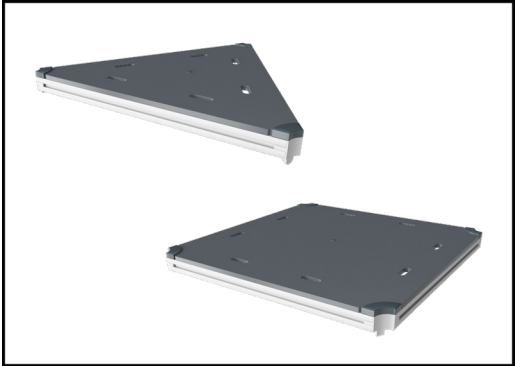
Physical: supports cross coordination, proprioception and sense of space. Leg and core muscles are used intensely. Upper body muscles are developed when children pull themselves upwards in the rope. **Social-Emotional:** turn-taking and self-regulation, both important life skills.

Triple Tower with Net

PCM310331



Panels of 19mm EcoCore™. EcoCore™ is a highly durable, eco friendly material, which is not only recyclable after use, but also consists of a core produced from 100% recycled material.

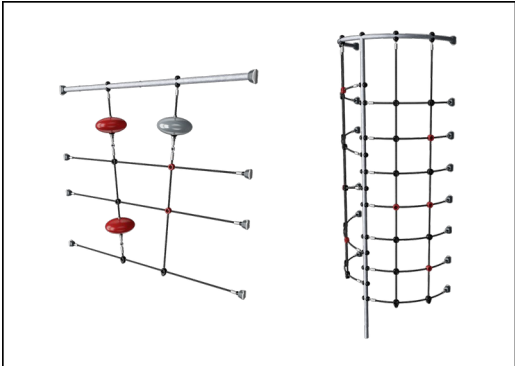


All decks are supported by uniquely designed low-carbon aluminum profiles with multiple attachment options. The grey-colored molded decks are made of 75% post-consumer ocean waste PP material with a non-skid pattern and texture surface.



Main posts with hot-dip galvanized steel footing are available in different materials: Pressure impregnated pinewood posts. Pre-galvanized inside and outside with powder-coated top finish steel posts. Lead-free aluminum with color anodized top finish. Greenline TexMade posts of 100% post-consumer recycled PE and textile waste.

Item no. PCM310331-0951	
Installation Information	
Max. fall height	9'4"
Safety surfacing area	713ft²
Total installation time	36.5 hours
Excavation volume	0.97yd³
Concrete volume	0.21yd³
Footing depth (standard)	2'11"
Shipment weight	2466lbs
Anchoring options	Surface ✓ In-ground ✓
Warranty Information	
EcoCore HDPE	Lifetime
Post	10 Years
PP Decks	10 Years
Ropes & nets	10 Years
Spare Parts Availability	10 Years



Ropes are made of UV-stabilized PES rope strands with inner steel cable reinforcement. The polyester wrapping is inductively melted onto each strand to ensure excellent wear and tear resistance.



The slides can be chosen in six different colors and three materials: Straight or curved one-piece molded PE slides. Combined EcoCore™ sides and stainless steel. Full stainless steel in a one-piece design for more vandalism-proof solutions.



Wood version of FSC®-certified (FSC®C004450) pine wood with pressure impregnated base treatment and brown painted top finish. Vertical boards and top ends protected by a unique aluminum profile for high outdoor durability.

Elevated activities 6	Accessible elevated activities	Accessible ground level activities	Accessible ground level play types
Present	4	2	2
Required	3	2	2

**ASTM
F1487**
compliant

Sustainability Data

PCM310331



Cradle to Gate A1-A3	Total CO ₂ emission	CO ₂ e/kg	Recycled materials
	kg CO ₂ e	kg CO ₂ e/kg	%
PCM310331-0951	1,631.09	1.79	72.40
PCM310331-0905	1,745.75	2.24	63.95

The overall framework applied for these factors is the Environmental Product Declaration (EPD), which quantifies "environmental information on the life cycle of a product and enable comparisons between products fulfilling the same function" (ISO, 2006). This follows the structure and applies a Life-Cycle Assessment approach to the entire Product stage from raw material through manufacturing (A1-A3))

Kompan A/S

C.F. Tietgens Boulevard 32C
DK-5220 Odense SØ
Denmark



Verification of CO₂ calculation of: Play systems



Data version no. 2023-10-05

The CO₂ calculation and data are in compliance with the principles of a carbon footprint impact according to the GHG protocol (Greenhouse Gas Protocol), Scope 3, cradle to gate related to all individual components in the product category: "Play systems" represented by item no.: PCM200321-0950.

(Scope 3 emissions include emission sources in the upstream and downstream value chain).

Date: 30. October 2023 | Valid until: 30. October 2025

Verified by:

Julie Marie Vejsgaard Larsen, LCA & EPD Consultant

Verification based on report: Validation of CO₂ calculation of 9 categories of Kompan product line, version 1.0, prepared by: Bureau Veritas HSE, Denmark: Julie M. V. Larsen.

Publication date: 30. October 2023

By Bureau Veritas HSE
www.bureauveritas.dk
+45 7731 1000



PCM310331

* Max fall height | ** Total height | *** Safety surfacing area



* Max fall height | ** Total height



Data is subject to change without prior notice.