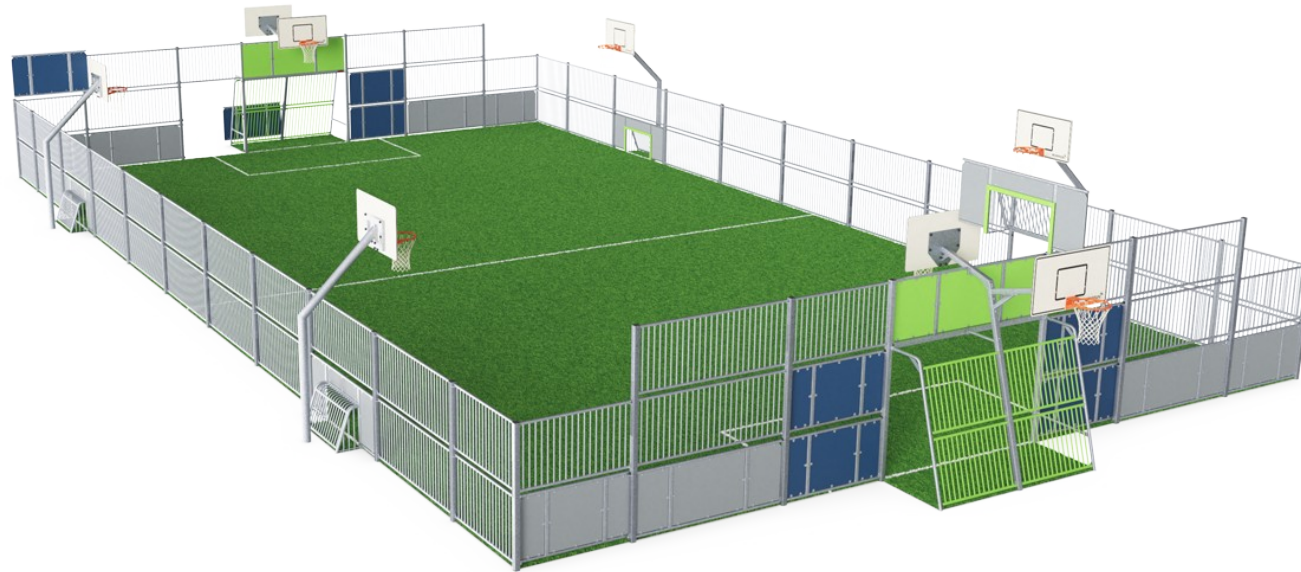


MUGA, 16 x 31m, HDPE

FRE601001

KOMPANI
Let's play



Item no. FRE601001-0906

General Product Information

Dimensions LxWxH	3104x1750x369 cm
Age group	3+
Play capacity (users)	-
Colour options	

The EcoCore™ is a highly durable, eco-friendly material, which is not only recyclable after use but also consists of a core produced from 100% recycled material. The core has a thickness of 15 mm and is representing 80% of the total material. The fully flat inside gives the best bounce experience when playing. This flat wall becomes a part of the game and means

the game can flow whilst adding another dimension that can challenge and develop players' tactical vision of the game. The 3 m x 2 m Multi-Goal follows the goal size of FIFA Futsal and IHF Handball regulations. The basketball hoop is placed at the official NBA height of 305 cm and has the official NBA size of 46 cm in diameter.



MUGA, 16 x 31m, HDPE

FRE601001



The HDPE panels are available in Night Sky Blue, Grey and Orange, but if required, you can request multiple colours to match playground theming. To increase the design and play value, you can also choose HDPE panels with patterns or have logo's engraved.



The Panna Goals are 118 x 68cm, and the distance between the vertical $\varnothing 21.3\text{mm}$ tubes is 68mm, small enough to keep all balls in play. The goal is framed with coloured HDPE strips to highlight the target.



The posts are made of 80 x 80 x 3mm profile with horizontally, 6mm welded flanges. This will enable easy installation and strong construction. The low-density polyethylene post caps are attached with blind rivets.

Item no. FRE601001-0906

Installation Information

Max. fall height	0 cm
Safety surfacing area	0.0 m ²
Total installation time	103.3
Excavation volume	4.86 m ³
Concrete volume	3.92 m ³
Footing depth (standard)	90 cm
Shipment weight	5,597 kg
Anchoring options	In-ground ✓ Surface ✓

Warranty Information

EcoCore HDPE	Lifetime
HDG Post	Lifetime
Spare Parts Guarantee	10 years



Each panel has 4 Thermoplastic Vulcanizates plugs connecting the panels to the posts. The plugs reduce the vibration and therefore reduce the noise level. The plugs will also simplify installation as they come with pre-assembled nuts.



KOMPAN's Multi Use Games Areas (MUGA) have been designed as a flexible system that can be configured to suit site requirements and budget considerations. You can easily change size, height, panels, entrances and goals.

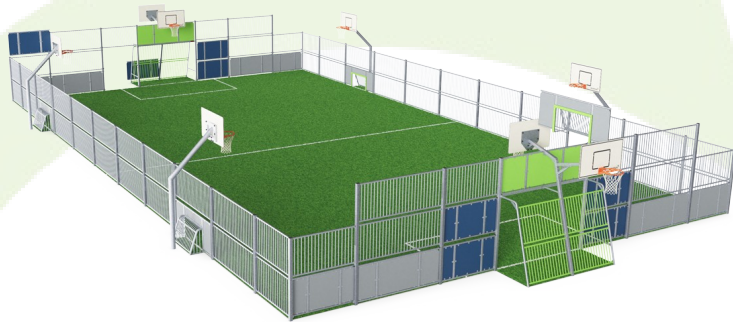


The HDPE panels are connected with M8 stainless steel bolts to 42.5 x 40 x 3mm welded flanges. These connections are not visible from the inside and create a strong and safe connection.



Sustainability Data

FRE601001



Cradle to Gate A1-A3	Total CO ₂ emission	CO ₂ e/kg	Recycled materials
	kg CO ₂ e	kg CO ₂ e/kg	%
FRE601001-0906	11,422.89	2.28	56.98

The overall framework applied for these factors is the Environmental Product Declaration (EPD), which quantifies "environmental information on the life cycle of a product and enable comparisons between products fulfilling the same function" (ISO, 2006). This follows the structure and applies a Life-Cycle Assessment approach to the entire Product stage from raw material through manufacturing (A1-A3))

Kompan A/S
C.F. Tietgens Boulevard 32C
DK-5220 Odense SØ
Denmark



Verification of CO₂ calculation of: Sport



Data version no. 2023-10-05

The CO₂ calculation and data are in compliance with the principles of a carbon footprint impact according to the GHG protocol (Greenhouse Gas Protocol), Scope 3, cradle to gate related to all individual components in the product category: "Sport" represented by item no.: FRE600202-0901.

(Scope 3 emissions include emission sources in the upstream and downstream value chain).

Date: 30. October 2023 | Valid until: 30. October 2025

Verified by:



Julie Marie Vejsgaard Larsen, LCA & EPD Consultant

Verification based on report: Validation of CO₂ calculation of 9 categories of Kompan product line, version 1.0, prepared by: Bureau Veritas HSE, Denmark: Julie M. V. Larsen.

Publication date: 30. October 2023

By Bureau Veritas HSE
www.bureauveritas.dk
+45 7731 1000

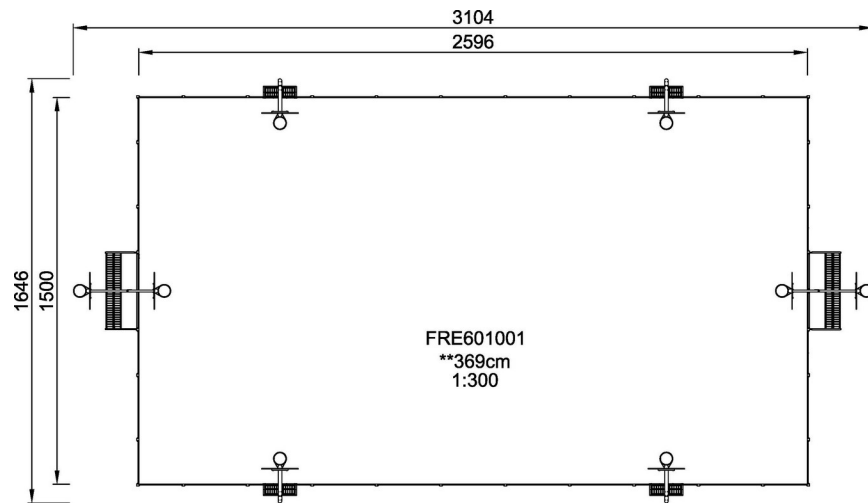


MUGA, 16 x 31m, HDPE

FRE601001

* Max fall height | ** Total height | *** Safety surfacing area

* Max fall height | ** Total height



[Click to see TOP VIEW](#)

[Click to see SIDE VIEW](#)