

Play Tower with Bars

PCM112121

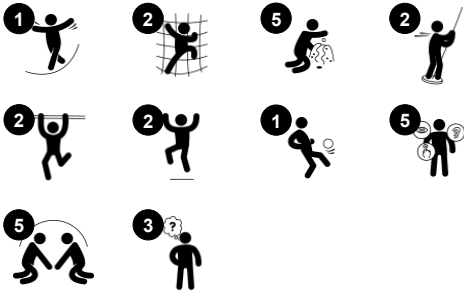


This play tower with bannister bars and climbing wall attracts children with its varied play offering. Varied climbing, crawling, gliding and balancing make children want to come back again and again. The graduated challenges allows for varied abilities and a wide age span in users. Under the deck there is a nice point for taking a rest and socialising with

tic-tac-toe. Climbing helps to develop cross-coordination skills. This enhances a child's ability to use both sides of their brain, and supports the ability of reading. The Fireman's Pole and Banister bars allow for bravehearts to glide down, training their sense of balance and space while having fun. These skills are fundamental in navigating the body through life

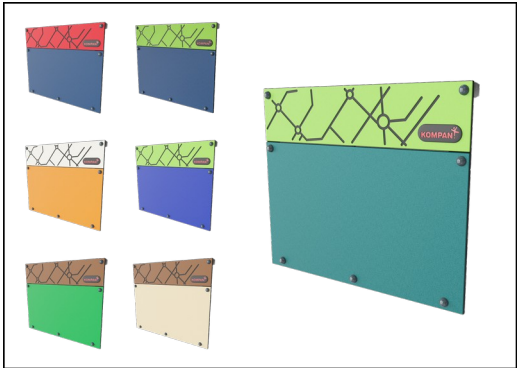
confidently and safely.

Item no. PCM112121-0905	
General Product Information	
Dimensions LxWxH	316x360x230 cm
Age group	4+
Play capacity (users)	11
Color options	



Play Tower with Bars

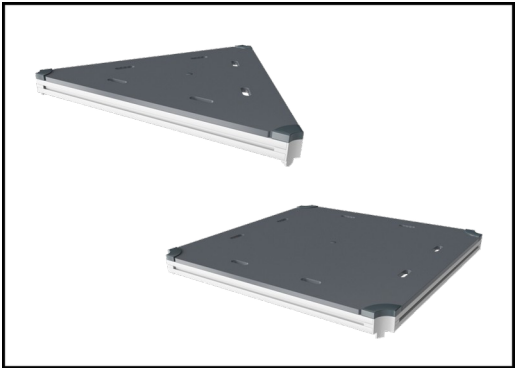
PCM112121



Panels of 19mm EcoCore™. EcoCore™ is a highly durable, eco friendly material, which is not only recyclable after use, but also consists of material produced from +95% recycled post consumer material from food packing waste.



Main posts with hot dip galvanized steel footing are available in different materials: Pressure impregnated pine wood posts. Pre-galvanized inside and outside with powder coated top finish steel posts. Lead free aluminum with color anodized top finish. Greenline TexMade posts of 95% post-consumer recycled PE and textile waste.



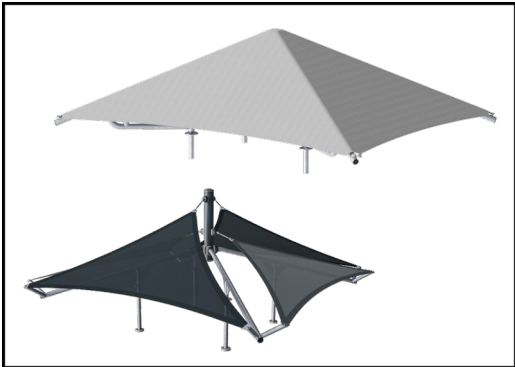
All decks are supported by unique designed low-carbon aluminum profiles with multiple attachment options. The grey colored molded decks are made of 75% post-consumer waste PP material with a non-skid pattern and texture surface.



The slides can be chosen in six different colors and three materials: Straight or curved one-piece molded PE slides, made from 33% recycled post-consumer materials in different colours. Combined EcoCore™ sides and stainless-steel. Full stainless steel in one piece design for more vandalism proof solutions.



Wood version of FSC®-certified (FSC®C004450) pine wood with pressure impregnated base treatment and brown painted top finish. Vertical boards and top ends protected by a unique aluminum profile for high outdoor durability.



Shade sails of commercial 95 high density PE knitted specially for sunshade structures. The sails are treated with UV stabilizers to ensure a long lifetime. The sails are supported by a hot dip galvanized steel frame. Closed sail equipped with an easy take down system.

Item no. PCM112121-0905	
Installation Information	
Max. fall height	209 cm
Safety surfacing area	26.6 m²
Total installation time	11.3 hours
Excavation volume	0.46 m³
Concrete volume	0.12 m³
Footing depth (standard)	90 cm
Shipment weight	325 kg
Anchoring options	Surface ✓ In-ground ✓
Warranty Information	
EcoCore HDPE	Lifetime
Movable parts	2 years
Post	10 years
PP Decks	10 years
Spare parts guaranteed	10 years



Sustainability Data

PCM112121



Cradle to Gate A1-A3	Total CO ₂ emission	CO ₂ e/kg	Recycled materials
	kg CO ₂ e	kg CO ₂ e/kg	%
PCM112121-0951	508.05	1.74	76.34
PCM112121-0905	563.06	2.19	69.51

The overall framework applied for these factors is the Environmental Product Declaration (EPD), which quantifies "environmental information on the life cycle of a product and enable comparisons between products fulfilling the same function" (ISO, 2006). This follows the structure and applies a Life-Cycle Assessment approach to the entire Product stage from raw material through manufacturing (A1-A3))

Kompan A/S

C.F. Tietgens Boulevard 32C
DK-5220 Odense SØ
Denmark



Verification of CO₂ calculation of: Play systems



Data version no. 2023-10-05

The CO₂ calculation and data are in compliance with the principles of a carbon footprint impact according to the GHG protocol (Greenhouse Gas Protocol), Scope 3, cradle to gate related to all individual components in the product category: "Play systems" represented by item no.: PCM200321-0950.

(Scope 3 emissions include emission sources in the upstream and downstream value chain).

Date: 30. October 2023 | Valid until: 30. October 2025

Verified by:

Julie Marie Vejsgaard Larsen, LCA & EPD Consultant

Verification based on report: Validation of CO₂ calculation of 9 categories of Kompan product line, version 1.0, prepared by: Bureau Veritas HSE, Denmark: Julie M. V. Larsen.

Publication date: 30. October 2023

By Bureau Veritas HSE
www.bureauveritas.dk
+45 7731 1000

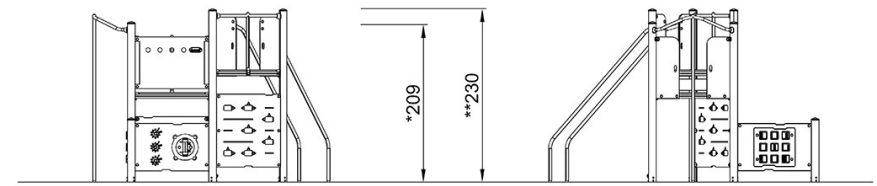
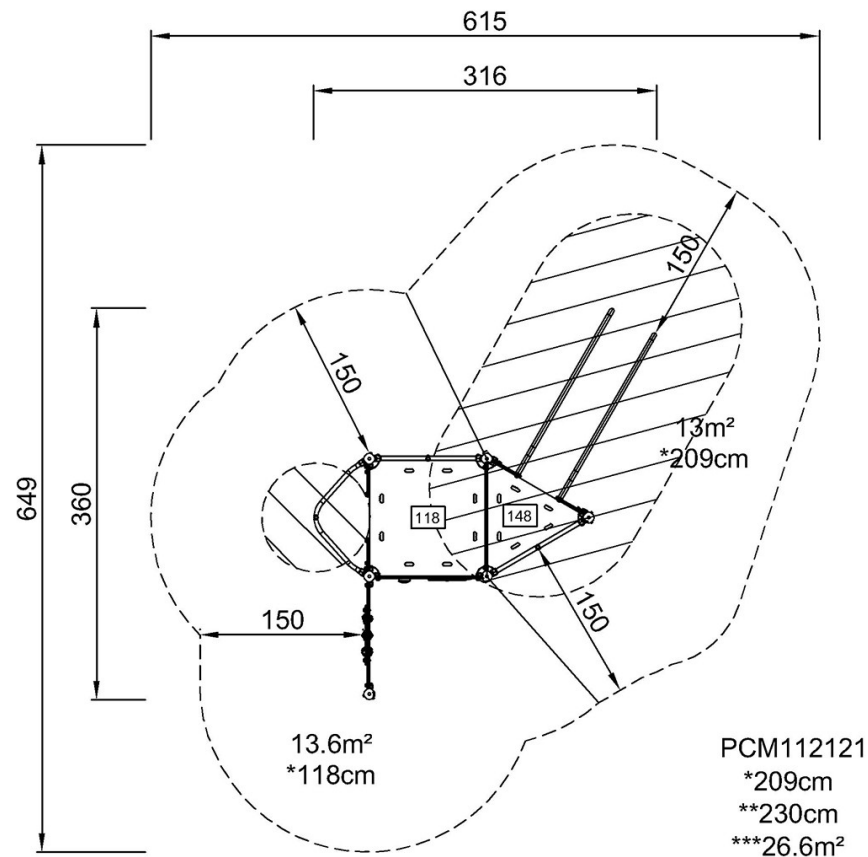


Play Tower with Bars

PCM112121

* Max fall height | ** Total height | *** Safety surfacing area

* Max fall height | ** Total height



PCM112121

[Click to see TOP VIEW](#)

[Click to see SIDE VIEW](#)