

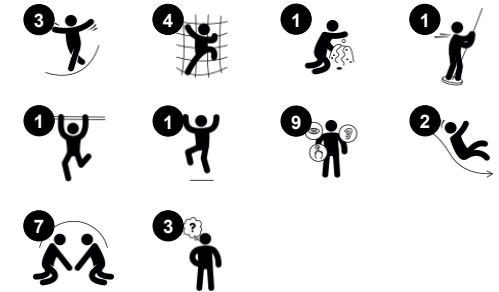
Mega Deck Upper Deck

PCM111021

KOMPAN
Let's play



产品编号 PCM111021-0904	
产品信息概览	
长宽高尺寸	649x480x470 cm
适用年龄段	4+
容纳人数	25
颜色选择	



The Mega Deck with Upper Deck attracts a multitude of children to play together, for a long time, again and again. It is roomy and sturdy enough to facilitate parents and care givers that join their children in play. The unit offers a wide variety of activities as well as graded play accesses: varied climbing outside as well as inside the structure add to the joy and train the

children's spatial awareness, their proprioception and muscles. These motor skills and muscles are all important to navigate the world securely, outside the playground. The many ground level activities add areas for retraction and quieter play. From the various upper levels, great views as well as varied gliding and sliding offer a thrilling ride. This is

what makes children loop the play unit again and again: up the unit, down the slides.

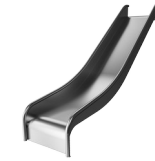
Mega Deck Upper Deck

PCM111021



Balcony

社交情感：阳台鼓励儿童在此会面，或与地面上的人互动。**认知能力**：鼓励戏剧性游戏和扮演游戏，刺激语言发展。



滑梯

身体素质：玩滑梯可以培养空间感和平衡感。此外，在直立向下坐时，核心肌肉也能得到锻炼。**社交情感**：轮流玩耍时可激发同理心。



Banister bars

身体素质：跳下来时，身体的协调性、手臂和核心肌肉都会得到发展。落地运动可增强骨密度，为童年生活做好准备。**社交情感**：训练轮流意识和风险意识。



Tower net

身体素质：the children have fast access up the horizontal rungs, and a slower climb up the sloping rungs. The net can be climbed from both sides, levelling the challenge. Cross coordination, and arm and leg muscles are trained. **社交情感**：the two-sided net and spaciousness allows for social interaction. **认知能力**：logical thinking when planning how to best enter the platform from the net.



Timer

社交情感：teams can each have a button to measure rounds, wins etc. The buttons support cooperation and teamwork. **认知能力**：counting and registering support thinking skills such as logical thinking and sequencing. **创造力**：children can leave their mark, placing the timer in different positions.



攀爬墙

身体素质：训练交叉协调能力以及腿部、手臂和手部力量。**社交情感**：对年幼的孩子来说，绳网的倾斜度让攀爬更具安全感。

Mega Deck Upper Deck

PCM111021



19 毫米 EcoCore™ 面板。EcoCore™ 是一种高度耐用、环保的材料，不仅在使用后可回收利用，而且还包含由 100 % 食品包装可循环材料制成的芯。



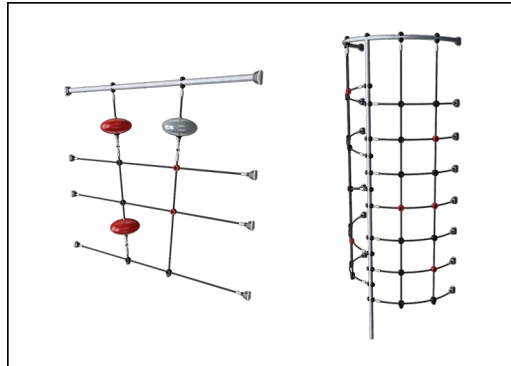
所有平台底板均由独特设计的低碳铝型材支撑，并具有多种加配选择。灰色模制平台底板由 75% 消费后的海洋可循环 PP 材料制成，具有防滑图案和表面纹理。



Main posts with hot dip galvanized steel footing are available in different materials: Pressure impregnated pine wood posts. Pre-galvanized inside and outside with powder coated top finish steel posts. Lead free aluminum with color anodized top finish. Greenline TexMade posts of 95% post-consumer recycled PE and textile waste.



载玻片可以选择六种不同的颜色和树形材料：直的或弯曲的一体式成型 PE 载玻片。结合 EcoCore™ 侧面和不锈钢。全不锈钢一体式设计，更多防破坏解决方案。



绳索由防紫外线的 PES 绳股制成，并带有内部钢缆增强件。聚酯包裹的绳股经过感应处理，熔化到每根单独的丝束上，以获得优异的耐磨性和抗撕裂性。



KOMPAN 环保系列产品采用终极环保材料设计，具有最低可能性的二氧化碳排放当量系数。TexMade 立柱，100% 消费后的海洋可循环材料制成的 EcoCore™ 面板和模制 PP 平台底板。

产品编号 PCM111021-0904

安装信息

最大跌落高度	299 cm
安全面积	48.9 m ²
安装总时长	29.2
开挖量	1.02 m ³
混凝土使用量	0.10 m ³
标准入地深度	90 cm
运输重量	1,087 kg
固定选项	入地 ✓ 地表 ✓

质保信息

EcoCore HDPE	终身质保
PE 滑梯	10 年
PP 板	10 年
绳网	10 年
承保零部件	10 年



Sustainability Data

PCM111021



从原材料到成品

CO₂ 排放总量

CO₂ 排放量 / 千克

回收的原料

kg CO₂e

kg CO₂e/kg

%

PCM111021-0951

1,652.05

1.89

68.10

PCM111021-0904

1,989.14

2.51

57.60

这些因素采用的总体框架为环保产品声明 (EPD), 该声明可量化“产品生命周期的环保信息, 并对相同功能的产品进行对比” (ISO, 2006)。在遵循该框架的同时, 对从原材料到制造的整个产品阶段 (A1-A3) 应用生命周期评估法。

Kompan A/S

C.F. Tietgens Boulevard 32C
DK-5220 Odense SØ
Denmark

Validation of CO₂ calculation method
BUREAU VERITAS
HSE Denmark A/S



Verification of CO₂ calculation of: Play systems



Data version no. 2023-10-05

The CO₂ calculation and data are in compliance with the principles of a carbon footprint impact according to the GHG protocol (Greenhouse Gas Protocol), Scope 3, cradle to gate related to all individual components in the product category: "Play systems" represented by item no.: PCM200321-0950.

(Scope 3 emissions include emission sources in the upstream and downstream value chain).

Date: 30. October 2023 | Valid until: 30. October 2025

Verified by:

Julie Marie Vejsgaard Larsen, LCA & EPD Consultant

Verification based on report: Validation of CO₂ calculation of 9 categories of Kompan product line, version 1.0, prepared by: Bureau Veritas HSE, Denmark: Julie M. V. Larsen.

Publication date: 30. October 2023

By Bureau Veritas HSE
www.bureauveritas.dk
+45 7731 1000

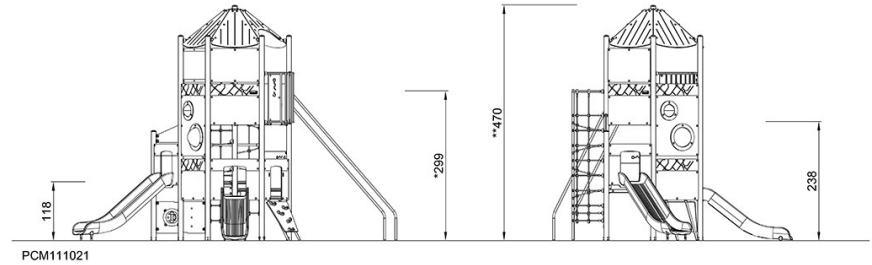
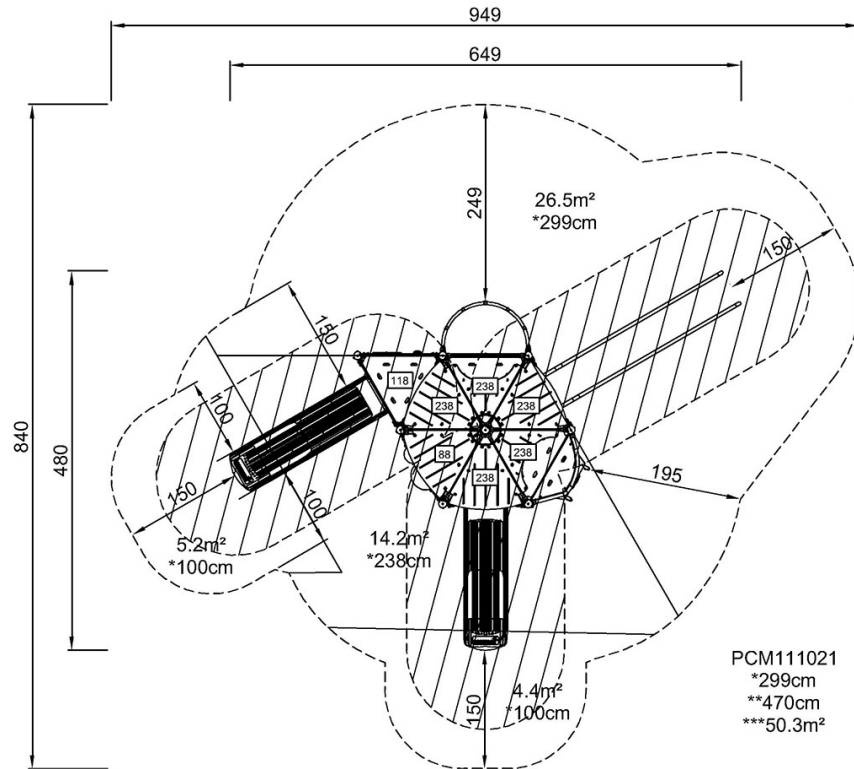


Mega Deck Upper Deck

PCM111021

最大跌落高度 | 总高度 | 安全区域

最大跌落高度 | 总高度



[点击查看俯视图](#)

[点击查看侧面图](#)