


Ligfiets

FSW241



The recumbent bike is designed for versatility, welcoming all types of users with its ease of use and comfortable design. Ideal for seniors or anyone needing extra balance, the bike features a wide seat with integrated handles and an adjustable backrest, accommodating various heights. It offers a smooth ride with an adjustable resistance system powered by a

magnetic brake and flywheel, allowing for a range of intensities. The resistance adjustment handle is within reach from the seated position, offering 10 levels for tailored exercise.

Item nummer FSW24100-0001	
Algemene Product Informatie	
Afmetingen LxBxH	193x44x91 cm
Leeftijdsgroep	13+
Speelcapaciteit	1
Kleuropties	



Ligfiets

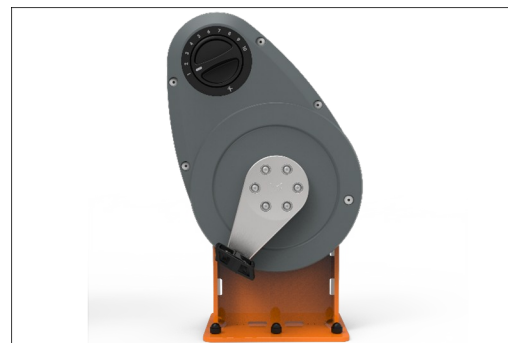
FSW241



To ensure the integrity of the machine, the orange-colored main posts are made of $\varnothing 101.6 \times 3\text{mm}$ s235 steel posts, which are hot dip galvanized and powder coated.



Het magnetisch weerstandssysteem is volledig bedekt en instelbaar met een draaiknop in 10 stappen. Het systeem is intuïtief in gebruik: je draait aan de knop om de weerstand te verhogen of verlagen.



De weerstandseenheid en alle mechanische onderdelen zitten in een volledig gesloten kast gemaakt van UV-gestabiliseerd polycarbonaat (PC). Dit voorkomt beknelling en maakt het toestel extreem veilig in gebruik. Daarnaast biedt de kast bescherming tegen weersinvloeden.



The machine is equipped with a weighted flywheel that ensures that the motion stays fluid and comfortable during use.



De zitting en rugleuning zijn gemaakt van Ekogrip™-panelen, die bestaan uit een 15 mm dikke PE-basis met een 3 mm dikke toplaag van zacht rubber met antislipeffect. De rugleuning is verstelbaar en de gebruiker heeft de keuze uit 6 verschillende afstanden tot de fiets.



The seat is tilted 5-degrees and the backrest 30-degrees. This is done to ensure optimal activation of the leg muscles during use. Furthermore, the seat has built-in support handles to increase safety and useability.

Item nummer FSW24100-0001

Installatie informatie

Max. valhoogte	50 cm
Veiligheidszone	15,1 m ²
Totale installatietijd	3,3
Graafwerk (vol.)	0,00 m ³
Benodigd beton	0,00 m ³
Verankeringsdiepte	0 cm
Verzendingsgewicht	170 kg
Verankeringsopties	Oppervlak ✓

Garantie informatie

Handvat	10 jaar
Bewegende delen	2 jaar
Polycarbonate PC panelen	10 jaar
Gegarandeerde reserveonderdelen	10 jaar
Stalen frame	10 jaar

EN
16630
compliant

Sustainability Data

FSW241



Cradle to Gate A1-A3	Total CO ₂ emission	CO ₂ e/kg	Recycled materials
	kg CO ₂ e	kg CO ₂ e/kg	%
FSW24100-0001	324,54	3,13	43,23

The overall framework applied for these factors is the Environmental Product Declaration (EPD), which quantifies "environmental information on the life cycle of a product and enable comparisons between products fulfilling the same function" (ISO, 2006). This follows the structure and applies a Life-Cycle Assessment approach to the entire Product stage from raw material through manufacturing (A1-A3))

Kompan A/S
C.F. Tietgens Boulevard 32C
DK-5220 Odense SØ
Denmark



Verification of CO₂ calculation of: Fitness



Data version no. 2023-10-05

The CO₂ calculation and data are in compliance with the principles of a carbon footprint impact according to the GHG protocol (Greenhouse Gas Protocol), Scope 3, cradle to gate related to all individual components in the product category: "Fitness" represented by item no.: FAZ10100-0900.

(Scope 3 emissions include emission sources in the upstream and downstream value chain).

Date: 30. October 2023 | Valid until: 30. October 2025
Verified by:

Julie Marie Vejsgaard Larsen, LCA & EPD Consultant

Verification based on report: Validation of CO₂ calculation of 9 categories of Kompan product line, version 1.0, prepared by: Bureau Veritas HSE, Denmark: Julie M. V. Larsen.

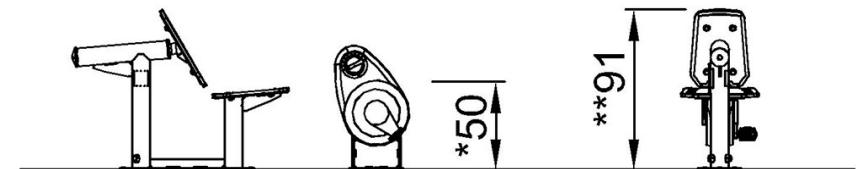
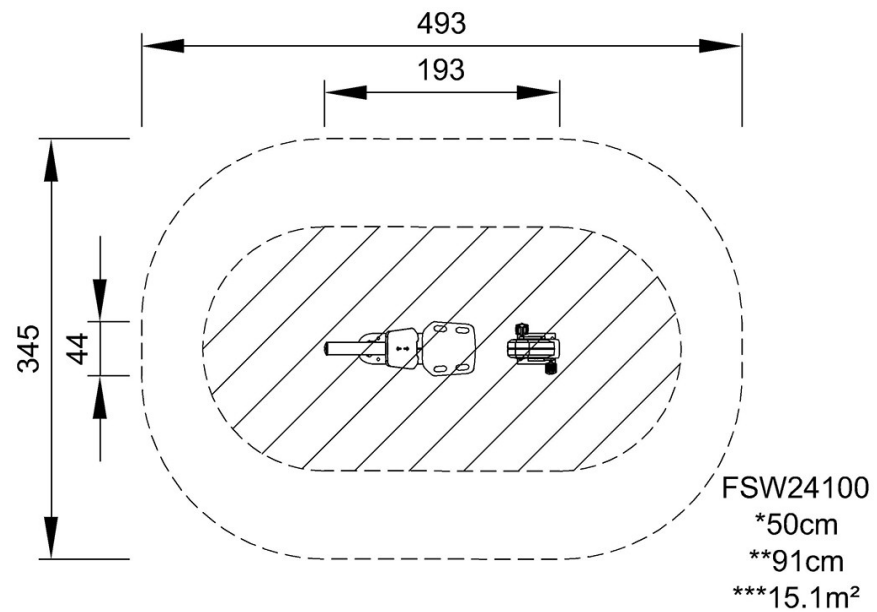
Publication date: 30. October 2023

By Bureau Veritas HSE
www.bureauveritas.dk
+45 7731 1000



Max. valhoogte | Totale Hoogte | Veiligheidszone

Max. valhoogte | Totale Hoogte



FSW24100

[Bekijk BOVENAANZICHT](#)

[Bekijk ZIJAAANZICHT](#)