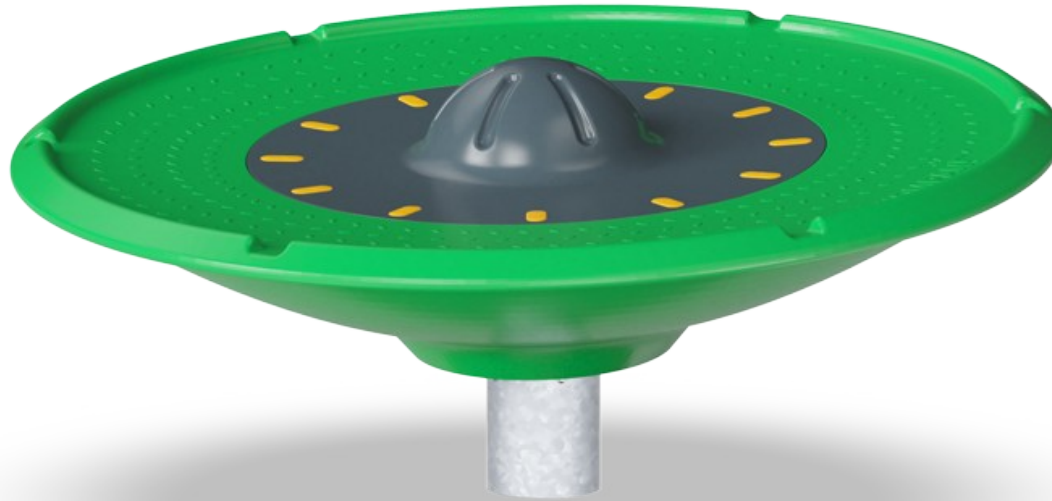
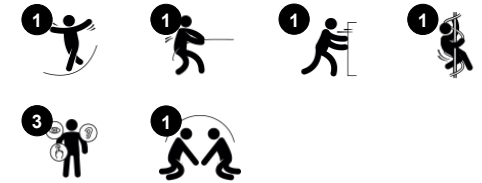


Spinner Disc

GXY959



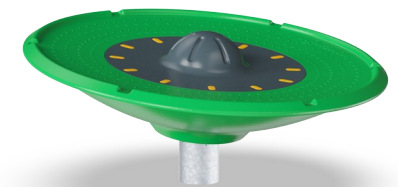
Item no. GXY959012-3717	
General Product Information	
Dimensions LxWxH	176x176x74 cm
Age group	6+
Play capacity (users)	7
Colour options	



WOW! The Spinner Disc makes children squeal from joy: It rotates, tickles the stomach and is spacious enough for groups of children playing. The fun rough and tumble play will make children come back again and again. The social appeal for children is evident: you can be active, and close together. Responsive to children's movements, the disc spins when

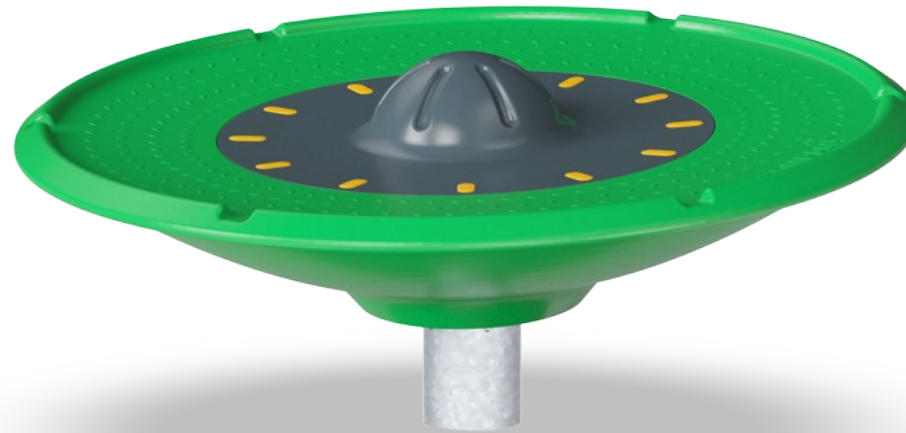
pushed or pulled. Apart from being a fun negotiation and turn-taking game, the pushing and pulling build muscles and cardio. Children can lie, sit or stand on the Spinner Disc with the support of the hunch in the middle. This welcomes children with mobility disabilities to be part of the play, too. The rotation trains the sense of balance which is fundamental for all

other skills. A well-trained sense of balance helps children to navigate the world securely, e.g. preventing falls when playing actively. The Spinner Disc is an important, responsive activity for play and active breaks.



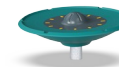
Spinner Disc

GXY959



Spinner Disc

Physical: balance and coordination is used to stay on the ring in motion and walking up- or downwards. This also trains leg and core muscles. Enables varied body positions e.g. lying, sitting, standing when spinning. **Social-Emotional:** cooperation setting the ring in motion. The round shape allows assistance from all sides. **Cognitive:** logical thinking, working with gravity when figuring out how to stay on the disc or make it move faster.

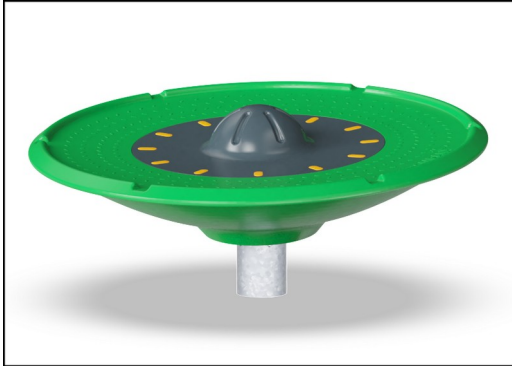


Low entry

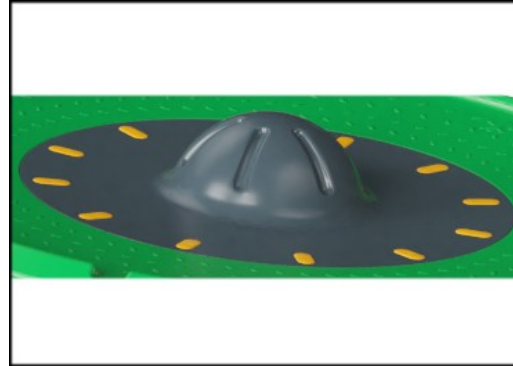
Social-Emotional: accessible and usable for all abilities and a wide age span.

Spinner Disc

GXY959



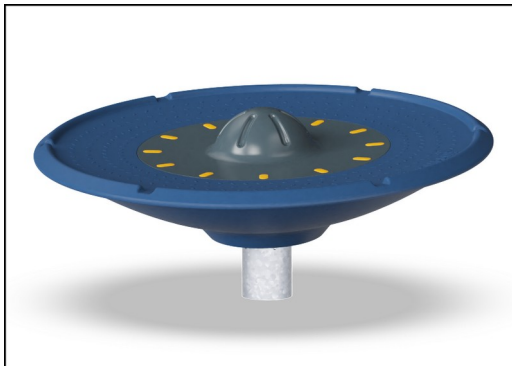
The outer ring of the Spinner Disc base is made of recyclable LDPE. The ring is moulded in one piece with integrated metal thread bushings and water drain holes to ensure high durability in all climates around the world.



The center part with bowl is made of recyclable LDPE and fixed to the outer ring by 12 attachment points sealed with yellow PA nylon caps.



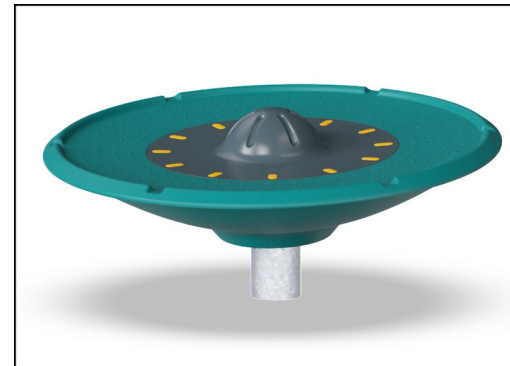
The sand colored variant is made of rotomolded stone mixed PE made from 33% post consumer materials with a non skid surface texture. Minor differences in the stone mix visuality of the material are to be expected.



Heavy duty engineered bearing system with single row deep groove ball bearings with rubber seals. The fully closed bearing construction is lifetime lubricated and maintenance free.



The steel surfaces are hot dip galvanised inside and outside with lead free zinc. The galvanisation has excellent corrosion resistance in outside environments and requires low maintenance.



GreenLine versions in teal color are designed with molded PE parts which consist of 33% recycled post-consumer ocean waste. Ocean waste is collected from the maritime industry, such as fishing nets, ropes and trawls.

Item no. GXY959012-3717

Installation Information

Max. fall height	100 cm
Safety surfacing area	47.3 m ²
Total installation time	3.7
Excavation volume	0.44 m ³
Concrete volume	0.31 m ³
Footing depth (standard)	100 cm
Shipment weight	157 kg
Anchoring options	Surface ✓ In-ground ✓

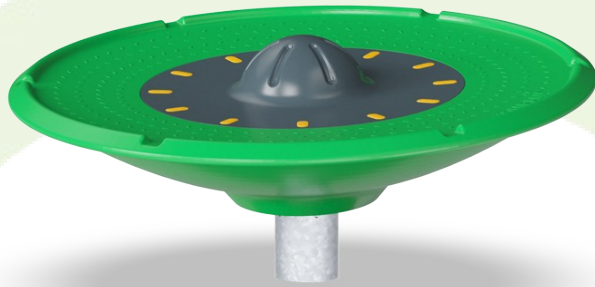
Warranty Information

Bearing construction	5 years
Hollow PE parts	10 years
Hot dip galvanised steel	Lifetime
Solid plastic parts	10 years
Spare parts guaranteed	10 years



Sustainability Data

GXY959



Cradle to Gate A1-A3	Total CO ₂ emission	CO ₂ e/kg	Recycled materials
	kg CO ₂ e	kg CO ₂ e/kg	%
GXY959012-3717	296.70	2.20	40.45

The overall framework applied for these factors is the Environmental Product Declaration (EPD), which quantifies "environmental information on the life cycle of a product and enable comparisons between products fulfilling the same function" (ISO, 2006). This follows the structure and applies a Life-Cycle Assessment approach to the entire Product stage from raw material through manufacturing (A1-A3))

Kompan A/S
C.F. Tietgens Boulevard 32C
DK-5220 Odense SØ
Denmark



Verification of CO₂ calculation of: Freestanding play equipment



Data version no. 2023-10-05

The CO₂ calculation and data are in compliance with the principles of a carbon footprint impact according to the GHG protocol (Greenhouse Gas Protocol), Scope 3, cradle to gate related to all individual components in the product category: "Freestanding play equipment" represented by item no.: GXY916012-3417.

(Scope 3 emissions include emission sources in the upstream and downstream value chain).

Date: 30. October 2023 | Valid until: 30. October 2025

Verified by:

Julie Marie Vejsgaard Larsen, LCA & EPD Consultant

Verification based on report: Validation of CO₂ calculation of 9 categories of Kompan product line, version 1.0, prepared by: Bureau Veritas HSE, Denmark: Julie M. V. Larsen.

Publication date: 30. October 2023

By Bureau Veritas HSE
www.bureauveritas.dk
+45 7731 1000

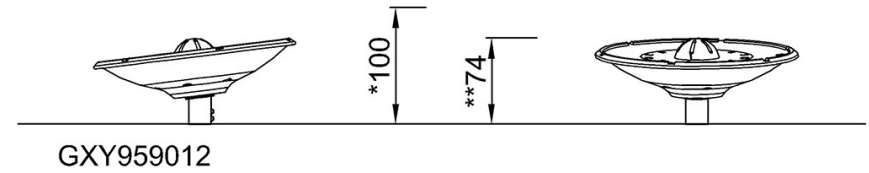
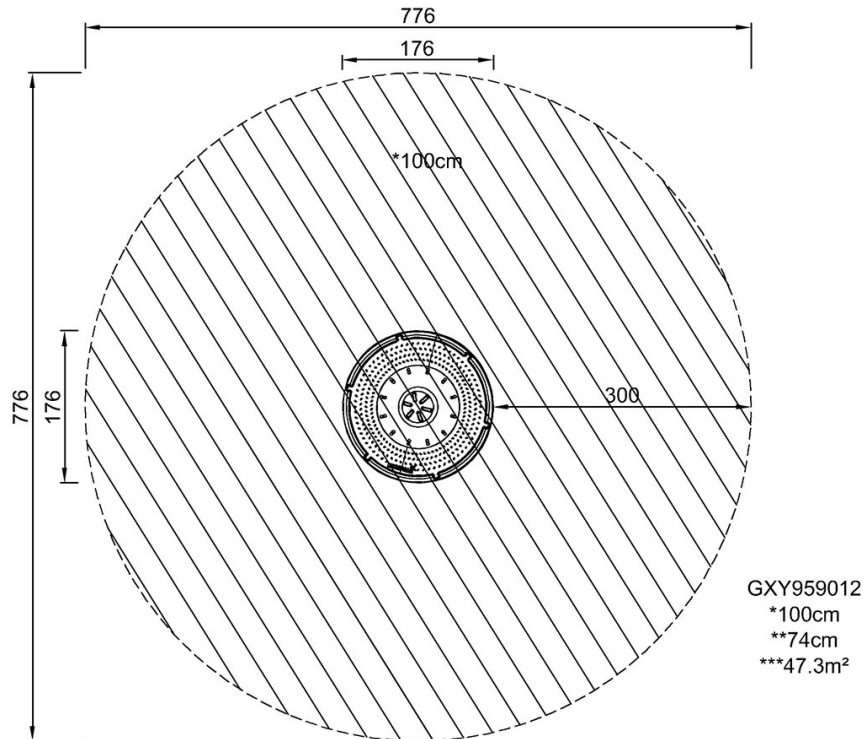


Spinner Disc

GXY959

* Max fall height | ** Total height | *** Safety surfacing area

* Max fall height | ** Total height



[Click to see TOP VIEW](#)

[Click to see SIDE VIEW](#)