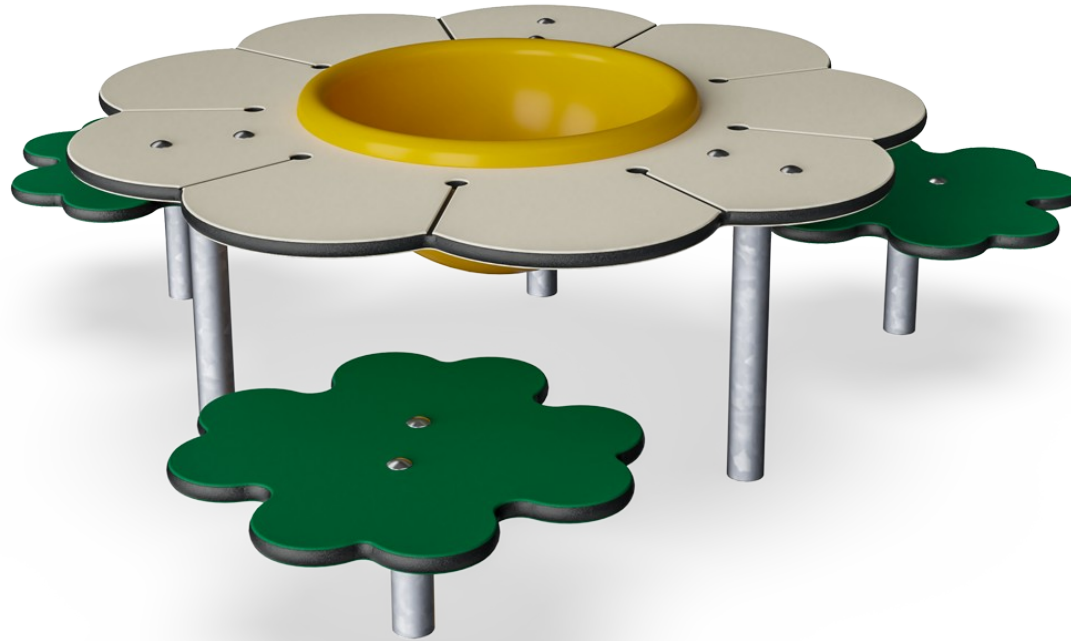



# Daisy Desk with Seats

M261



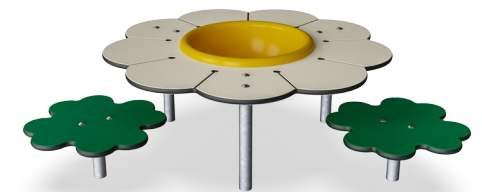
Item no. M26101-3418P	
<b>General Product Information</b>	
Dimensions LxWxH	143x129x40 cm
Age group	6m - 4
Play capacity (users)	3
Colour options	



The Daisy Desk with Seats immediately attracts and welcomes infants and toddlers with its age appropriate size and cute floral theme. The desk provides an ergonomically perfect place to work with loose parts, together with friends or care givers. The yellow bowl is a perfect container for materials. It can be lifted and emptied, a favourite activity for young

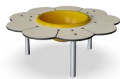
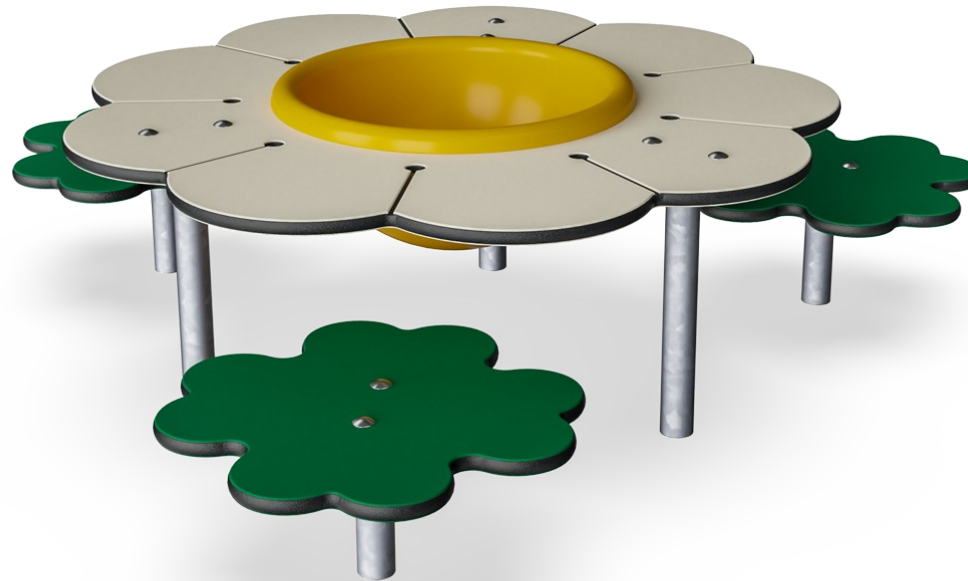
children. The Daisy Desk with Seats encourages social play: the three seats are placed to ensure eye contact. Adults can sit on the table to informally or formally guide the play. The Daisy Desk with Seats offers toddlers an opportunity to break out from the wilder action in playgrounds. This respite adds to the time they can spend in play. It gives the chance

to watch and be inspired by peers in the playground. And to socialize and make friends.



# Daisy Desk with Seats

M261



## Splash basin

**Social-Emotional:** meeting point for cooperation and sharing. **Cognitive:** construction play storage – playing with sand here promotes thinking skills.



## Seat

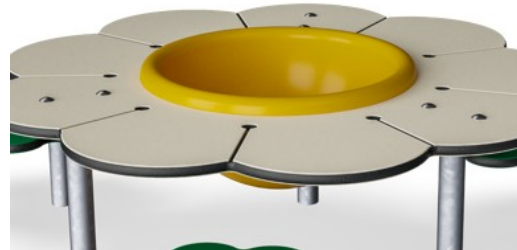
**Physical:** stepping up, jumping down develops muscle and motor skills. **Social-Emotional:** meeting, sharing and having a break.

# Daisy Desk with Seats

M261



Panels of 19mm EcoCore™. EcoCore™ is a highly durable, eco friendly material, which is not only recyclable after use, but also consists of material produced from +95% recycled post consumer material from food packing waste.



Sand basin is made of Polycarbonate (PC). Basin is moulded in one piece to ensure high durability in all climates around the world.



The steel surfaces are hot dip galvanised inside and outside with lead free zinc. The galvanisation has excellent corrosion resistance in outside environments and requires low maintenance.



KOMPAN GreenLine versions are designed with ultimate environmentally friendly materials with lowest possible CO2e emission factor such as EcoCore™ panels of +95% post consumer recycled ocean waste.

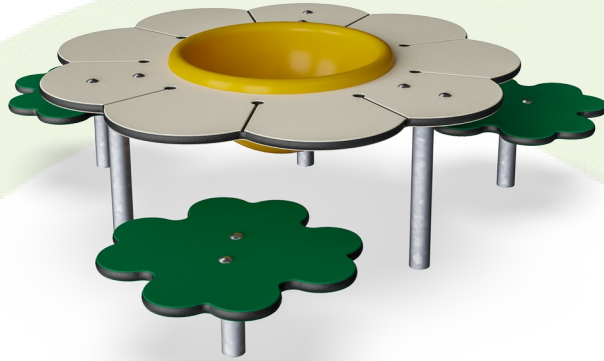
Item no. M26101-3418P	
Installation Information	
Max. fall height	0 cm
Safety surfacing area	0.0 m <sup>2</sup>
Total installation time	2.6
Excavation volume	0.23 m <sup>3</sup>
Concrete volume	0.00 m <sup>3</sup>
Footing depth (standard)	64 cm
Shipment weight	48 kg
Anchoring options	In-ground ✓ Surface ✓
Warranty Information	
EcoCore HDPE	Lifetime
Hot dip galvanised steel	Lifetime
Spare parts guaranteed	10 years

Elevated activities 0	Accessible elevated activities	Accessible ground level activities	Accessible ground level play types
Present	0	1	1
Required	0	1	1



# Sustainability Data

M261



Cradle to Gate A1-A3	Total CO <sub>2</sub> emission	CO <sub>2</sub> e/kg	Recycled materials
	kg CO <sub>2</sub> e	kg CO <sub>2</sub> e/kg	%
<b>M26101-3418P</b>	90.79	1.93	64.15

The overall framework applied for these factors is the Environmental Product Declaration (EPD), which quantifies "environmental information on the life cycle of a product and enable comparisons between products fulfilling the same function" (ISO, 2006). This follows the structure and applies a Life-Cycle Assessment approach to the entire Product stage from raw material through manufacturing (A1-A3))

**Kompan A/S**  
C.F. Tietgens Boulevard 32C  
DK-5220 Odense SØ  
Denmark



## Verification of CO<sub>2</sub> calculation of: Themed play systems



Data version no. 2023-10-05

The CO<sub>2</sub> calculation and data are in compliance with the principles of a carbon footprint impact according to the GHG protocol (Greenhouse Gas Protocol), Scope 3, cradle to gate related to all individual components in the product category: "Themed play systems" represented by item no.: MSC641100-3717P.

(Scope 3 emissions include emission sources in the upstream and downstream value chain).

**Date: 30. October 2023 | Valid until: 30. October 2025**

Verified by:

Julie Marie Vejsgaard Larsen, LCA & EPD Consultant

Verification based on report: Validation of CO<sub>2</sub> calculation of 9 categories of Kompan product line, version 1.0, prepared by: Bureau Veritas HSE, Denmark: Julie M. V. Larsen.

**Publication date: 30. October 2023**

By Bureau Veritas HSE  
www.bureauveritas.dk  
+45 7731 1000

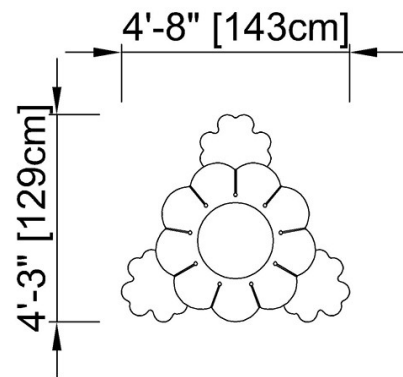


# Daisy Desk with Seats

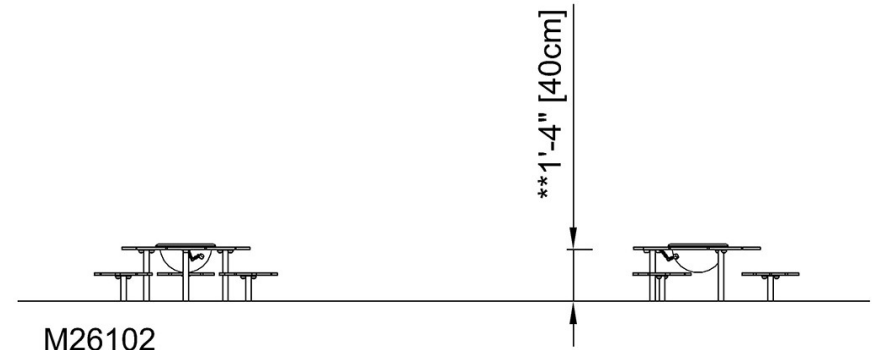
M261

\* Max fall height | \*\* Total height | \*\*\* Safety surfacing area

\* Max fall height | \*\* Total height



M26102  
\*\*1'-4" / 40cm



[Click to see TOP VIEW](#)

[Click to see SIDE VIEW](#)