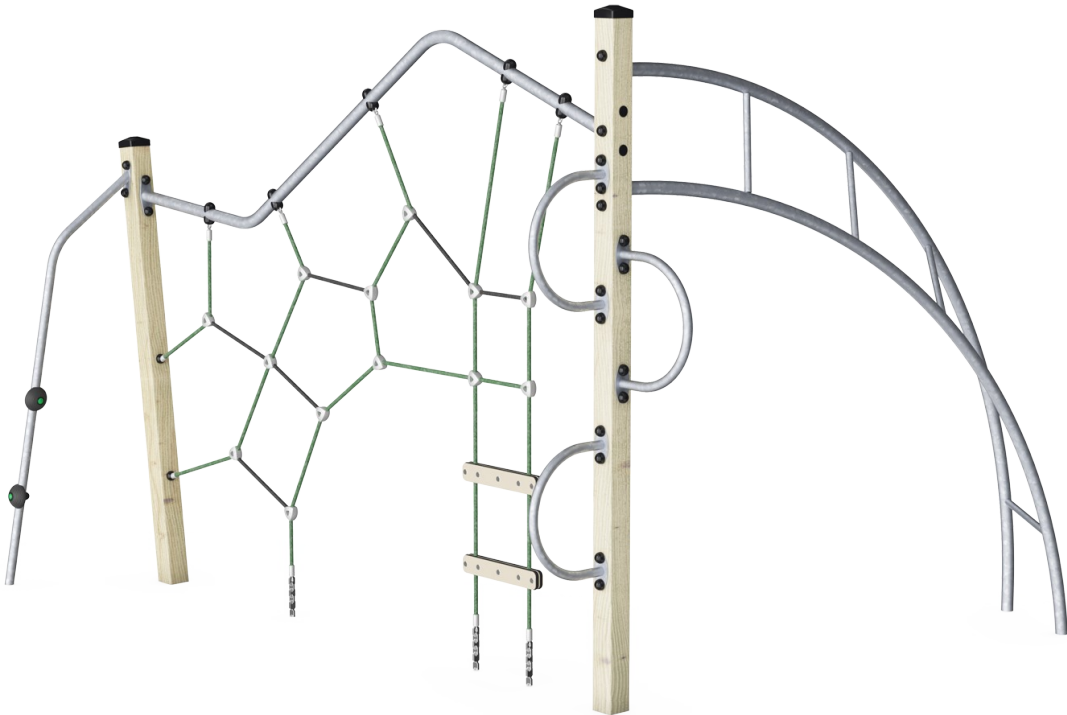


Mountaineer

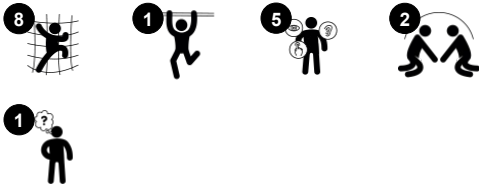
NAT528



Item no. NAT528-0912

General Product Information

Dimensions LxWxH	346x275x242 cm
Age group	4+
Play capacity (users)	8
Colour options	



With its cool, thrilling climbs, the Mountaineer attracts world explorers among school-age children. The variety of challenging climbs and crawls via nets, tubes, and Jacob's Ladder will make children return for more play again and again. The Jacob's Ladder has a special feature in the twist of the 3rd step: this makes a change of foot position necessary to go further.

The mastery of this proprioceptive action is only possible for children of a certain age. There are other ways to climb and the variation stimulates children's balance and cross-coordination. These motor skills are important for children's physical confidence and their security in moving, for instance in the street. The Mountaineer is a challenging, fun meeting

point for active socializing with friends.



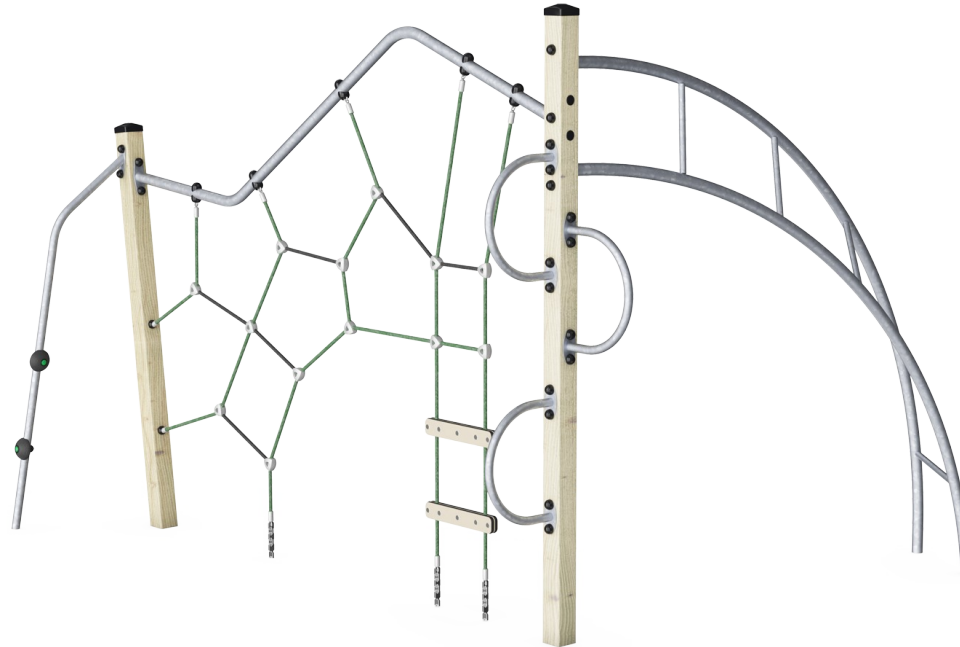
Mountaineer

NAT528



Jacob's ladder

Physical: cross coordination and spatial awareness as well as upper body muscles when hanging with arms. **Social-Emotional:** turn-taking and cooperation. **Cognitive:** logical thinking when going from 2nd to 3rd step, changing feet.



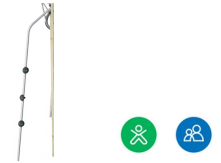
Climbing net

Physical: children develop cross-body coordination and muscle strength. The asymmetry of the net challenges the children's climbing and crawling through. **Social-Emotional:** the big meshes allow for more children seated together, sharing.



Climbing pole

Physical: develops children's cross coordination, eye-hand coordination and muscle strength when climbing up or down.

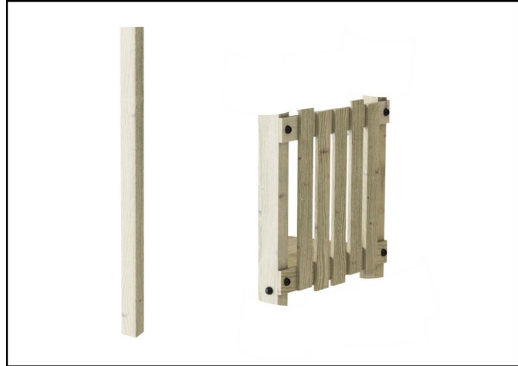


Climbing pole

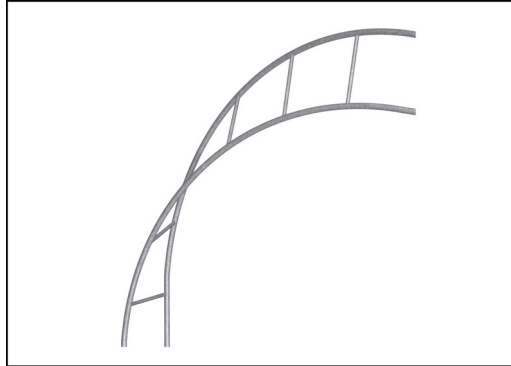
Physical: develops children's cross coordination, eye-hand coordination and muscle strength when climbing up or down. **Social-Emotional:** turn-taking and self-regulation are trained, both important life skills.

Mountaineer

NAT528



Posts and boards are made of pine wood from sustainable European sources. The wood is pressure impregnated Class 3 with Tanalith E. On request it can be supplied as FSC® Certified (FSC® C004450).



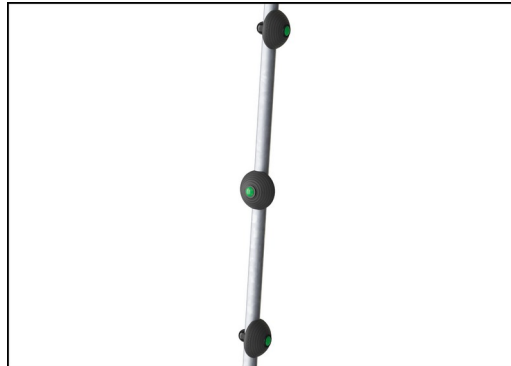
The steel surfaces are hot-dip galvanised inside and outside with lead-free zinc. The galvanisation has excellent corrosion resistance in outside environments and requires low maintenance.



Corocord ropes of UV-stabilized PES rope strands with inner steel cable reinforcement. The polyester yarn is made from +95% post-consumer materials and is inductively melted onto each strand. PES has high strength with excellent resistance to abrasion and UV radiation. The rope loops are assembled by aluminum connectors.



The post end caps are made of injection molded high quality nylon (PA6). PA6 has good wearing and impact strength and is UV stabilized. The end caps protect vertical placed posts to ensure long lifetime.



The round climbing steps are made of PUR materials which is soft and durable.

Item no. NAT528-0912

Installation Information

Max. fall height	223 cm
Safety surfacing area	27.6 m²
Total installation time	5.1
Excavation volume	1.42 m³
Concrete volume	0.31 m³
Footing depth (standard)	90 cm
Shipment weight	148 kg
Anchoring options	In-ground ✓ Surface ✓

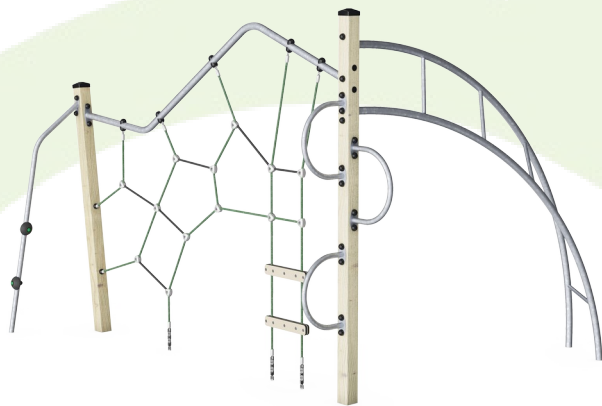
Warranty Information

Galvanised Steel	Lifetime
Pinewood	10 years
PUR Components	10 years
Ropes & Nets	10 years
Spare Parts Guarantee	10 years



Sustainability Data

NAT528



Cradle to Gate A1-A3	Total CO ₂ emission	CO ₂ e/kg	Recycled materials
	kg CO ₂ e	kg CO ₂ e/kg	%
NAT528-0912	309.45	2.34	38.40

The overall framework applied for these factors is the Environmental Product Declaration (EPD), which quantifies "environmental information on the life cycle of a product and enable comparisons between products fulfilling the same function" (ISO, 2006). This follows the structure and applies a Life-Cycle Assessment approach to the entire Product stage from raw material through manufacturing (A1-A3))

Kompan A/S
C.F. Tietgens Boulevard 32C
DK-5220 Odense SØ
Denmark



Verification of CO₂ calculation of: Nature play



Data version no. 2023-10-05

The CO₂ calculation and data are in compliance with the principles of a carbon footprint impact according to the GHG protocol (Greenhouse Gas Protocol), Scope 3, cradle to gate related to all individual components in the product category: "Nature play" represented by item no.: NR0409-0621.

(Scope 3 emissions include emission sources in the upstream and downstream value chain).

Date: 30. October 2023 | Valid until: 30. October 2025
Verified by:

Julie Marie Vejsgaard Larsen, LCA & EPD Consultant

Verification based on report: Validation of CO₂ calculation of 9 categories of Kompan product line, version 1.0, prepared by: Bureau Veritas HSE, Denmark: Julie M. V. Larsen.

Publication date: 30. October 2023

By Bureau Veritas HSE
www.bureauveritas.dk
+45 7731 1000

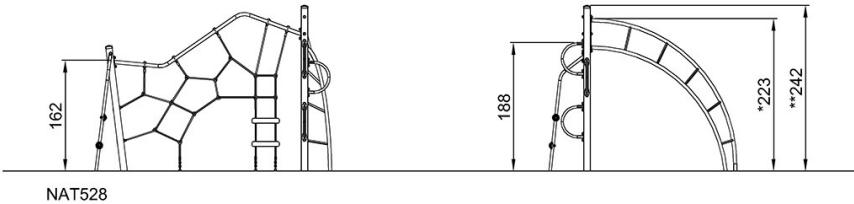
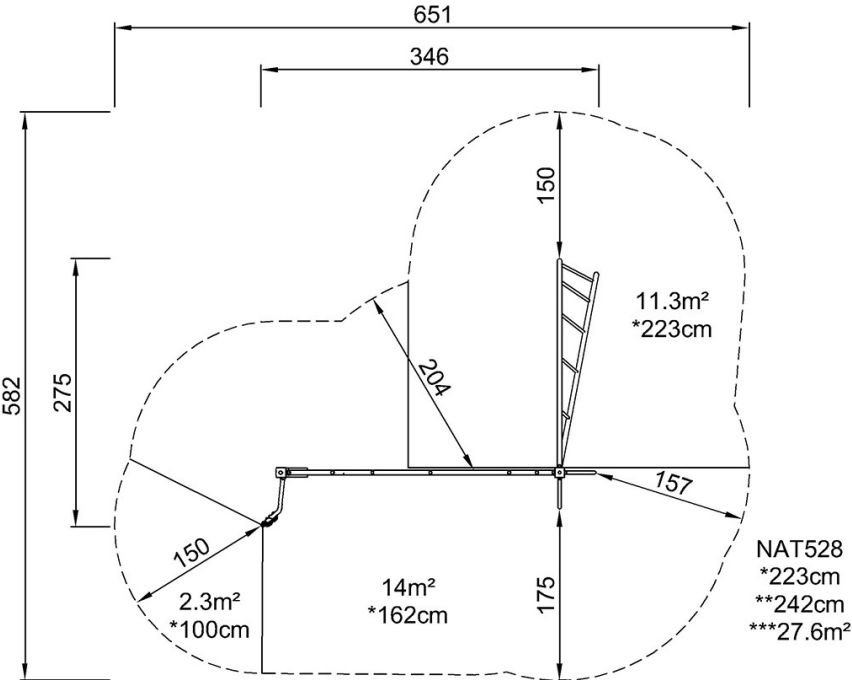


Mountaineer

NAT528

* Max fall height | ** Total height | *** Safety surfacing area

* Max fall height | ** Total height



[Click to see TOP VIEW](#)

[Click to see SIDE VIEW](#)