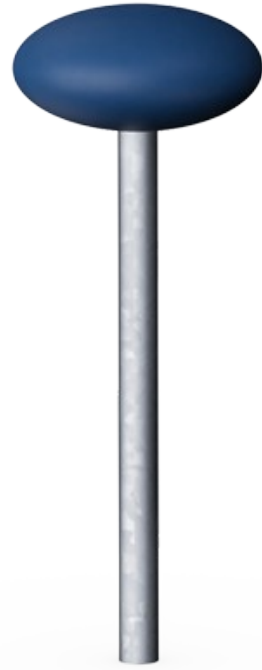
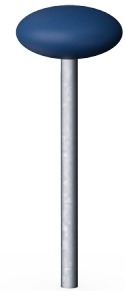


Grasshopper

FRE3044



Item no. FRE3044-3517	
General Product Information	
Dimensions LxWxH	30x30x80 cm
Age group	3+
Play capacity (users)	-
Colour options	●



The pole with rounded top seat offers a playful way to sit and watch the games in multisport pitch but can also as stand alone or in combination with other agility products function for outdoor training exercises.

Grasshopper

FRE3044



The top seat is 15 cm high and has a diameter of 30. cm. The top seat is made of PE and has a fine structure which makes it comfortable for the hands.



The tube of the Grasshopper is made of a Ø48,3 x 2,9mm, hot dip galvanized steel tube. The top seat is connected with a M12 bolt and covered by a PE top cap.

Item no. FRE3044-3517

Installation Information

Max. fall height	80 cm
Safety surfacing area	8.6 m ²
Total installation time	0.3
Excavation volume	0.20 m ³
Concrete volume	0.00 m ³
Footing depth (standard)	80 cm
Shipment weight	14 kg
Anchoring options	In-ground ✓

Warranty Information

HDG post	Lifetime
Hollow PE parts	10 years
Spare parts guaranteed	10 years



Sustainability Data

FRE3044



Cradle to Gate A1-A3	Total CO ₂ emission	CO ₂ e/kg	Recycled materials
	kg CO ₂ e	kg CO ₂ e/kg	%
FRE3044-3517	26.58	2.52	48.44

The overall framework applied for these factors is the Environmental Product Declaration (EPD), which quantifies "environmental information on the life cycle of a product and enable comparisons between products fulfilling the same function" (ISO, 2006). This follows the structure and applies a Life-Cycle Assessment approach to the entire Product stage from raw material through manufacturing (A1-A3))

Kompan A/S
 C.F. Tietgens Boulevard 32C
 DK-5220 Odense SØ
 Denmark



Verification of CO₂ calculation of: Sport



Data version no. 2023-10-05

The CO₂ calculation and data are in compliance with the principles of a carbon footprint impact according to the GHG protocol (Greenhouse Gas Protocol), Scope 3, cradle to gate related to all individual components in the product category: "Sport" represented by item no.: FRE600202-0901.

(Scope 3 emissions include emission sources in the upstream and downstream value chain).

Date: 30. October 2023 | Valid until: 30. October 2025

Verified by:

Julie Marie Vejsgaard Larsen, LCA & EPD Consultant

Verification based on report: Validation of CO₂ calculation of 9 categories of Kompan product line, version 1.0, prepared by: Bureau Veritas HSE, Denmark: Julie M. V. Larsen.

Publication date: 30. October 2023

By Bureau Veritas HSE
 www.bureauveritas.dk
 +45 7731 1000

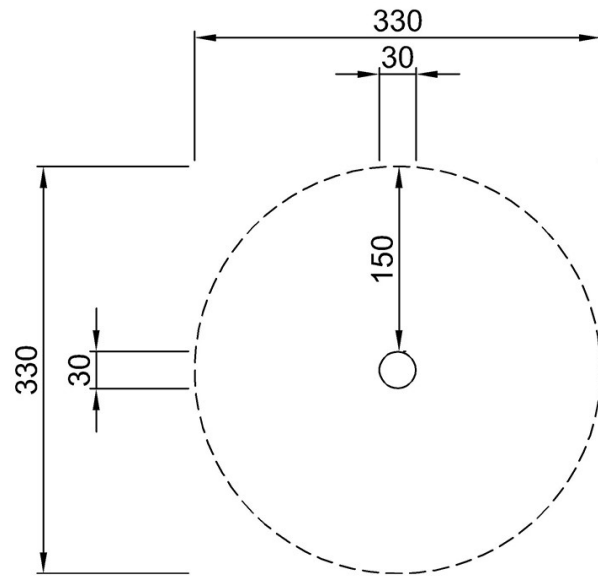


Grasshopper

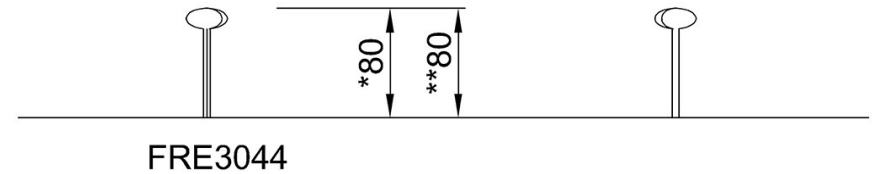
FRE3044

* Max fall height | ** Total height | *** Safety surfacing area

* Max fall height | ** Total height



FRE3044-Single
*80cm
**80cm
***8.6m²



FRE3044

[Click to see TOP VIEW](#)

[Click to see SIDE VIEW](#)