

LOOP Top for Cone, 15in

TPP29546



Item no. TPP29546-0011

General Product Information

Dimensions LxWxH	1'3"x1'3"x0'2"
Age group	
Play capacity (users)	
Color options	●

The 15in version of the LOOP Top is used when the Cone is positioned with the narrow end upwards. Tops are a great way to add a shared workspace or simply enhance the social seating area. Available in a variety of colors, the Cone and Table Top can be coordinated to fit the theme of your school, playground, or cheerful atmosphere.

Available in a variety of colors, the Cone and Table Top can be coordinated to fit the theme of your school, playground, or cheerful atmosphere.

The Top comes with mounting brackets, which provide easy placement.

LOOP Top for Cone, 15in

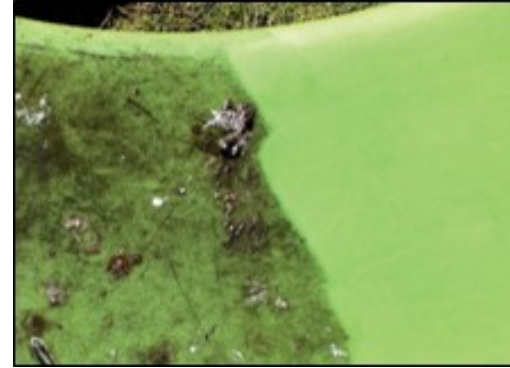
TPP29546



The Loops modular elements are made of rotation-molded polyethylene (PE) with a 6-7mm thickness. The Loops are UV-resistant, have excellent impact strength, and are usable within a large temperature span.



The Loops come in various standard colors, offering options to personalize your product and ensure a perfect fit for your intended space.



This product withstands most cleaning agents and chemicals and can be cleaned using a high-pressure cleaner. The color can be revived using vinyl cleaner or similar.

Item no. TPP29546-0011

Installation Information

Total installation time	0.0
Excavation volume	0yd ³
Concrete volume	0yd ³
Footing depth (standard)	0'0"
Shipment weight	3lbs
Anchoring options	In-ground ✓ Surface ✓