

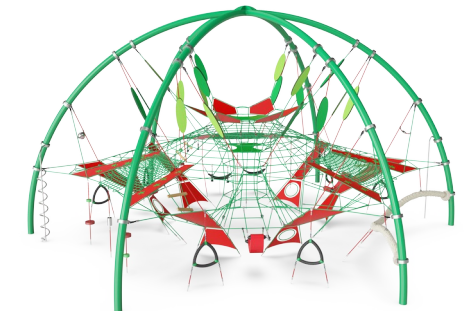
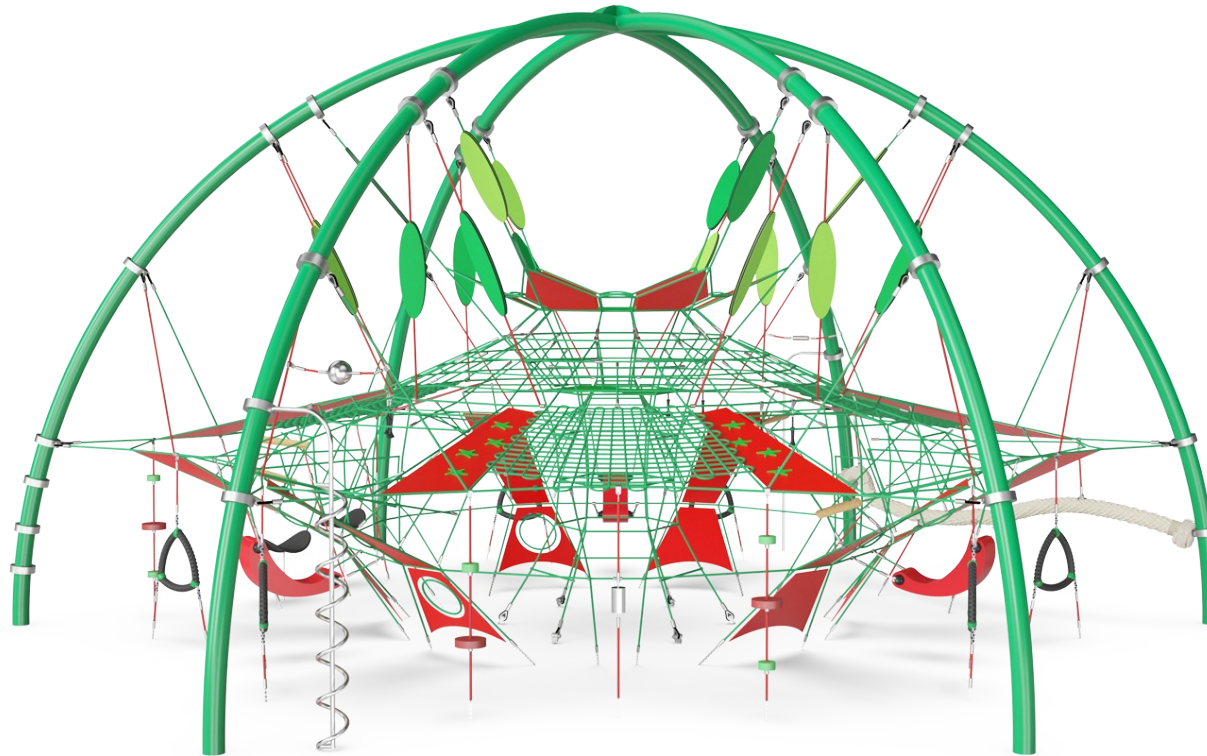
Giant Dome

COR86700

Item no. COR867001-0403

General Product Information

Dimensions LxWxH	1217x1067x619 cm
Age group	5+
Play capacity (users)	90
Color options	



WOW! The GIANT Dome attracts children wildly. Hugely varied play activities ensure climbing, gliding, bouncing, swaying play retention. When climbing across the GIANT Dome to the top, children train important social-emotional skills such as empathy, cooperation and self regulation. The feeling of achievement in reaching the top up high makes the meetings

there sweet. The climb journey develops the children's strength and cross-coordination. These are crucial physical skills to train in a sedentary everyday. Apart from the rich physical play, active social play is encouraged in horizontal nets and membranes. On ground level, a choice of climb-over, through and up activities invite play. Swaying horizontal and

vertical ropes, triangles and play shells accommodate active, fun retraction and meeting points for all to meet and make friends in play.



Giant Dome

COR86700



The metal parts are made of high quality steel, hot dip galvanised inside and outside with leadfree zinc. On the outside, there is an additional layer of powder coating. This ensures both excellent corrosion resistance and colourful design expression.



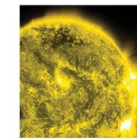
Corocord 'S' clamps are used as universal connections in Corocord products. 8mm stainless steel rods with rounded edges are pressed around the ropes with a special hydraulic press, making them the ideal connector: safe, durable and vandalism-proof, all while allowing the typical movement of rope play structures.



LUNA



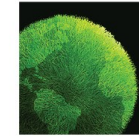
MARS



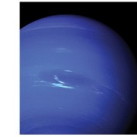
SOLARIS



VENUS



TERRA



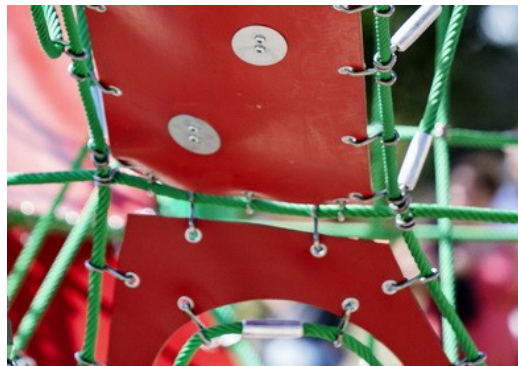
NEPTUNE

The COROCORD Frame Nets are available in 6 galactic colour themes. The themes draw on bright colours that appeal to children of all ages. Can be changed in the configurator.

Item no. COR867001-0403

Installation Information

Max. fall height	260 cm
Safety surfacing area	147.9 m ²
Total installation time	97.2
Excavation volume	13.94 m ³
Concrete volume	6.72 m ³
Footing depth (standard)	90 cm
Shipment weight	4,087 kg
Anchoring options	In-ground ✓



Corocord membranes consist of friction-proof rubberized material of conveyor belt quality with excellent UV resistance. Tested and compliant with REACH requirements for PAH. Embedded is a four-layered armoring made of woven polyester. The armoring and the two surface layers result in a total thickness of 7.5 mm.



Ropes of UV-stabilized PES rope strands with inner steel cable reinforcement. The polyester yarn is made from +95% post-consumer materials and is inductively melted onto each strand. The ropes are highly wear- and vandalism-resistant and can be replaced at site if needed.



As an option, sunshading can be integrated into the Giant Dome. The lightweight, durable and semitransparent tissue perfectly complements the colourful design, while blocking up to 79% of solar radiation and protecting the children.



Sustainability Data

COR86700



Cradle to Gate A1-A3	Total CO ₂ emission	CO ₂ e/kg	Recycled materials
	kg CO ₂ e	kg CO ₂ e/kg	%
COR867001-0403	11,856.90	3.17	44.80

The overall framework applied for these factors is the Environmental Product Declaration (EPD), which quantifies "environmental information on the life cycle of a product and enable comparisons between products fulfilling the same function" (ISO, 2006). This follows the structure and applies a Life-Cycle Assessment approach to the entire Product stage from raw material through manufacturing (A1-A3))

Kompan A/S
C.F. Tietgens Boulevard 32C
DK-5220 Odense SØ
Denmark



Verification of CO₂ calculation of: Corocord



Data version no. 2023-10-05

The CO₂ calculation and data are in compliance with the principles of a carbon footprint impact according to the GHG protocol (Greenhouse Gas Protocol), Scope 3, cradle to gate related to all individual components in the product category: "Corocord" represented by item no.: COR314011-1101.

(Scope 3 emissions include emission sources in the upstream and downstream value chain).

Date: 30. October 2023 | Valid until: 30. October 2025

Verified by:

Julie Marie Vejsgaard Larsen, LCA & EPD Consultant

Verification based on report: Validation of CO₂ calculation of 9 categories of Kompan product line, version 1.0, prepared by: Bureau Veritas HSE, Denmark: Julie M. V. Larsen.

Publication date: 30. October 2023

By Bureau Veritas HSE
www.bureauveritas.dk
+45 7731 1000

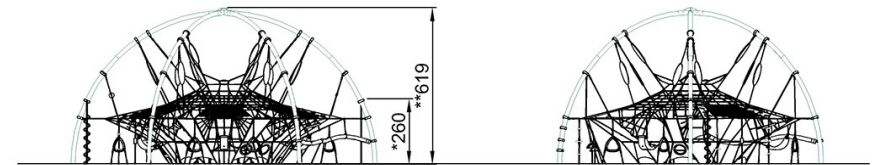
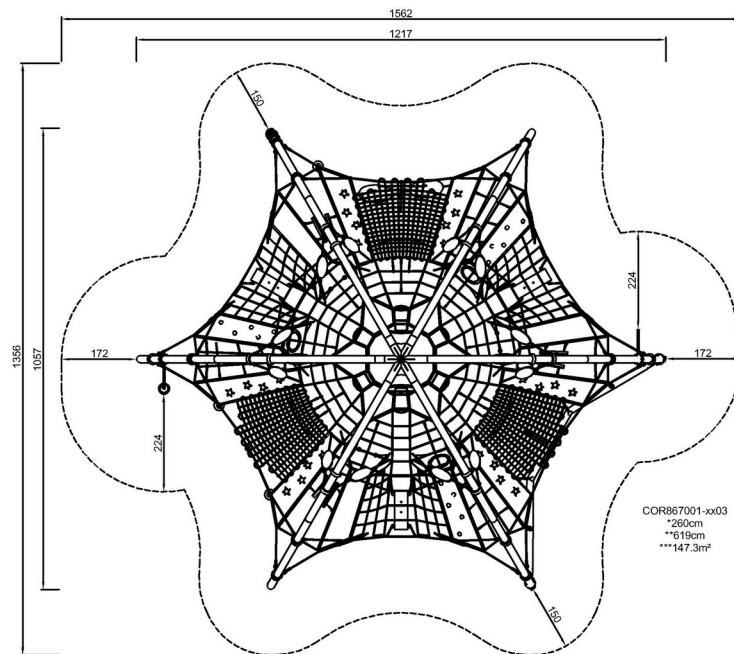


Giant Dome

COR86700

* Max fall height | ** Total height | *** Safety surfacing area

* Max fall height | ** Total height



COR867001

[Click to see TOP VIEW](#)

[Click to see SIDE VIEW](#)