



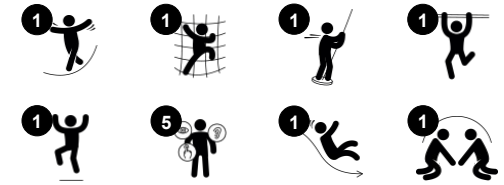
# Play Tower with Climbing Wall

KPL1016

**KOMPAN**  
Let's play



Item no. KPL101611-0902	
<b>General Product Information</b>	
Dimensions LxWxH	148x354x372 cm
Age group	4+
Play capacity (users)	5
Colour options	 



The Play Tower With Climbing Wall is an action-packed, dense, colourful play unit that attracts children to come and climb, slide and glide. The varied play within a limited space makes it an intense play event that children will return to again and again. The climbing wall offers a fast way up, training muscles, and cross-coordination. Cross-coordination is a

fundamental skill for literacy in later life. From the platform, there are two fun ways down to the ground, sliding or gliding. The fireman's pole trains the child's spatial awareness intensely, adding thrill with its speedy egress. This is fundamental in building up an understanding of mathematics. The slide, apart from being great fun, trains the child's core

stability and sense of balance. The turn-taking skills trained in this dense unit builds up important socio-emotional skills for cooperative play.



# Play Tower with Climbing Wall

KPL1016



## Climbing wall

**Physical:** develops children's cross coordination, eye-hand coordination, and muscle strength when climbing. **Social-Emotional:** two-sided climb invites cooperation.



## Slide

**Physical:** develops spatial awareness, sense of balance and trains core muscles when sitting upright going down. **Social-Emotional:** empathy stimulated by turn-taking.



## Fireman's pole

**Physical:** supports coordination, arm and core muscles. Landing strengthens bone density. **Social-Emotional:** turn-taking and risk-taking.

# Play Tower with Climbing Wall

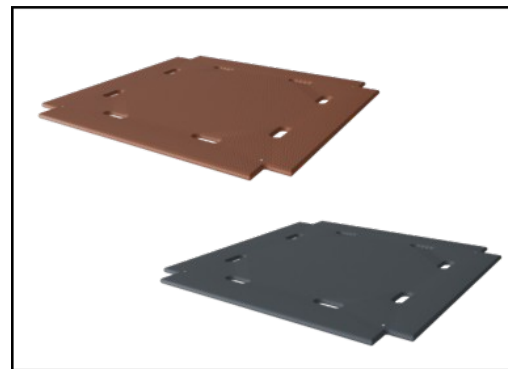
KPL1016



Panels of 19mm EcoCore™. EcoCore™ is a highly durable, eco-friendly material, which is not only recyclable after use but also consists of a core produced from 100% recycled material.



Options available for the main tower posts consist of either pine wood or aluminium which both come equipped with hot-dip galvanised steel footings. The steel footings elevate the posts 20mm from ground level to avoid contact with surfacing material.



Floors and panel activities are manufactured from high-pressure laminate HPL with a thickness 17.8mm and non-skid surface texture.

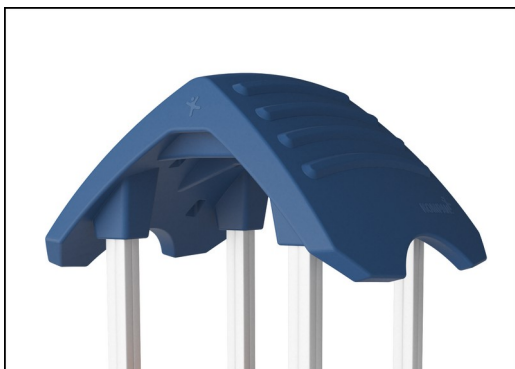
Item no. KPL101611-0902

### Installation Information

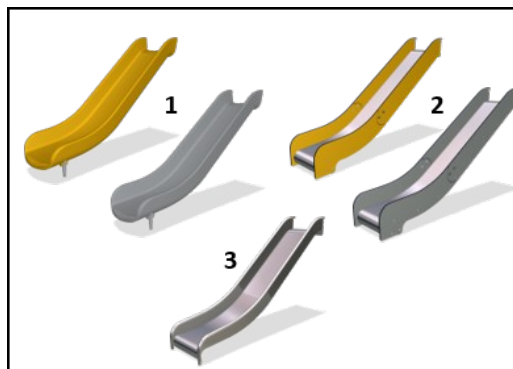
Max. fall height	148 cm
Safety surfacing area	23.0 m <sup>2</sup>
Total installation time	7.6
Excavation volume	0.70 m <sup>3</sup>
Concrete volume	0.25 m <sup>3</sup>
Footing depth (standard)	90 cm
Shipment weight	232 kg
Anchoring options	In-ground ✓ Surface ✓

### Warranty Information

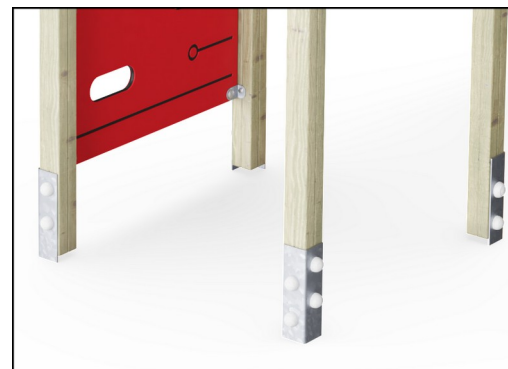
Aluminum	15 years
EcoCore HDPE	Lifetime
Hollow PE parts	10 years
Pinewood	10 years
Spare Parts Guarantee	10 years



The large hollow components are made of 100% recyclable PE. The roof displayed is moulded in one piece with minimum 5,5mm wall thickness to ensure high durability in all climates around the world.



Slides are available in three different materials: moulded on piece PE slides, combined EcoCore™ sides and stainless steel slide bed t=2mm. Full stainless steel AISI304 t=2mm.



The main posts are equipped with hot-dip galvanised steel footings. The steel footings elevate the posts position 20mm from ground level to avoid contact with surfacing material.



# Sustainability Data

KPL1016



Cradle to Gate A1-A3	Total CO <sub>2</sub> emission	CO <sub>2</sub> e/kg	Recycled materials
	kg CO <sub>2</sub> e	kg CO <sub>2</sub> e/kg	%
<b>KPL101611-0902</b>	247.73	1.35	36.49

The overall framework applied for these factors is the Environmental Product Declaration (EPD), which quantifies "environmental information on the life cycle of a product and enable comparisons between products fulfilling the same function" (ISO, 2006). This follows the structure and applies a Life-Cycle Assessment approach to the entire Product stage from raw material through manufacturing (A1-A3))

**Kompan A/S**  
 C.F. Tietgens Boulevard 32C  
 DK-5220 Odense SØ  
 Denmark



## Verification of CO<sub>2</sub> calculation of: Play systems



Data version no. 2023-10-05

The CO<sub>2</sub> calculation and data are in compliance with the principles of a carbon footprint impact according to the GHG protocol (Greenhouse Gas Protocol), Scope 3, cradle to gate related to all individual components in the product category: "Play systems" represented by item no.: PCM200321-0950.

(Scope 3 emissions include emission sources in the upstream and downstream value chain).

**Date: 30. October 2023 | Valid until: 30. October 2025**

Verified by:

Julie Marie Vejsgaard Larsen, LCA & EPD Consultant

Verification based on report: Validation of CO<sub>2</sub> calculation of 9 categories of Kompan product line, version 1.0, prepared by: Bureau Veritas HSE, Denmark: Julie M. V. Larsen.

**Publication date: 30. October 2023**

By Bureau Veritas HSE  
 www.bureauveritas.dk  
 +45 7731 1000

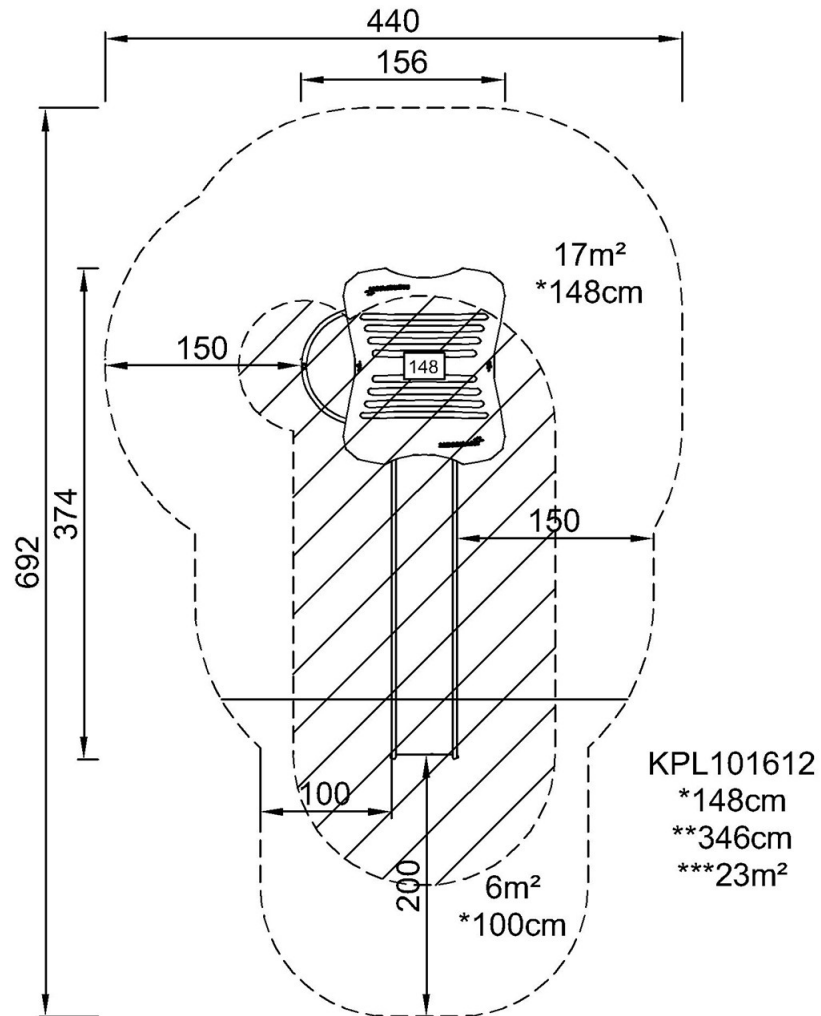


# Play Tower with Climbing Wall

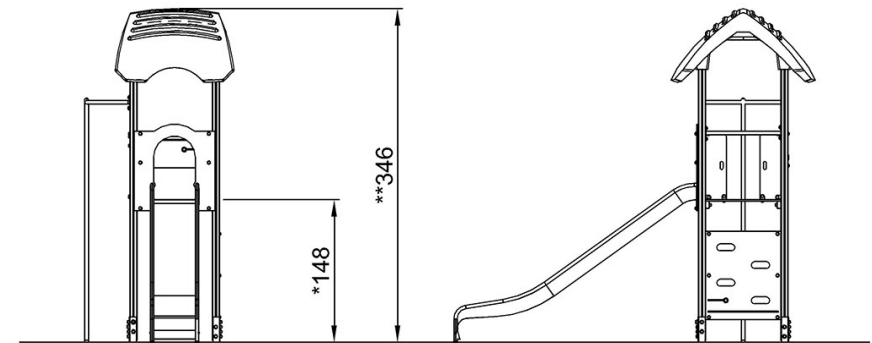
KPL1016

\* Max fall height | \*\* Total height | \*\*\* Safety surfacing area

\* Max fall height | \*\* Total height



[Click to see TOP VIEW](#)



KPL101612

[Click to see SIDE VIEW](#)