

Sprinter with Roof

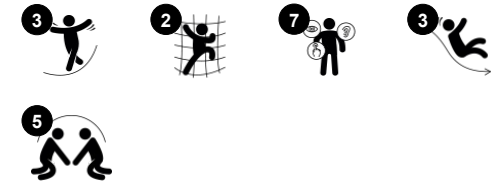
PCE105634



Item no. PCE105634-0901

General Product Information

Dimensions LxWxH	464x538x327 cm
Age group	2 - 5
Play capacity (users)	13
Colour options	  



Wow! The Sprinter will encourage physical as well as social play, the ingredient to helping children and their families to stay and play for longer times. With the many opportunities to climb and to slide, children will develop important physical skills as well as social skills when playing on the Sprinter. Climbing supports cross-coordination, which again

supports the brain's readiness for reading. The open spaces at elevation will also encourage children to socialize. The different options for sliding to the ground adds to the thrill. Sliding develops the child's trunk stability and sense of balance. These are important skills for moving with confidence. The double slide invites social play and inclusive play. Sliding with friends

stimulate cooperation and turn-taking. Children will be delighted by the Sprinter, which encourages healthy outdoor play.



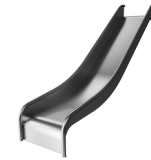
Sprinter with Roof

PCE105634



Double slide

Physical: sliding develops spatial awareness and a sense of balance. Furthermore, the core muscles are trained when sitting upright going down. **Social-Emotional:** invites socializing, supports parent-child and peer-to-peer play. **Cognitive:** young children train their understanding of space, speed and distances when sliding down quickly.



Slide

Physical: sliding develops spatial awareness and a sense of balance. Furthermore, the core muscles are trained when sitting upright going down. **Social-Emotional:** empathy stimulated by turn-taking.



Bench

Social-Emotional: invites socializing and cooperation. Allows for a break with friends.



Climbing pole

Physical: cross coordination and muscle strength are trained. **Social-Emotional:** turn-taking and cooperation.

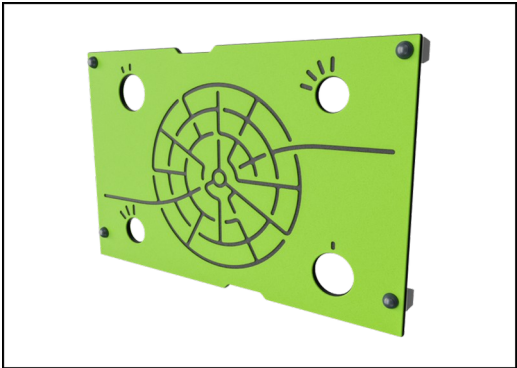


Accessible stairway

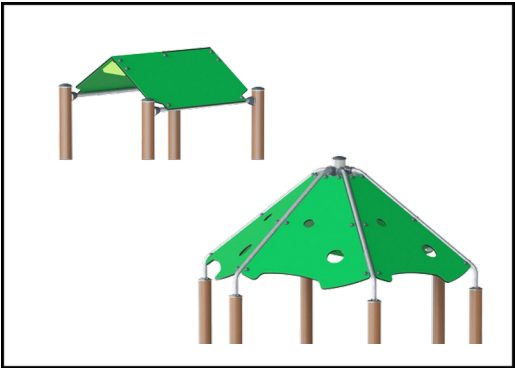
Physical: climbing the accessible stairway is for all and supports cross coordination as well as arm and leg muscles. For young children, walking stairs and alternating feet is developed. **Social-Emotional:** room for active breaks and adult helpers. An inclusive space.

Sprinter with Roof

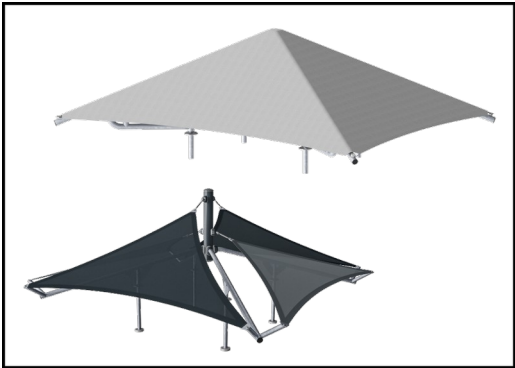
PCE105634



Panels of 19mm EcoCore™. EcoCore™ is a highly durable, eco friendly material, which is not only recyclable after use, but also consists of material produced from +95% recycled post consumer material from food packing waste.



The roofs are made of KOMPAN EcoCore™ panels and supported by hot dip galvanized steel pipes.

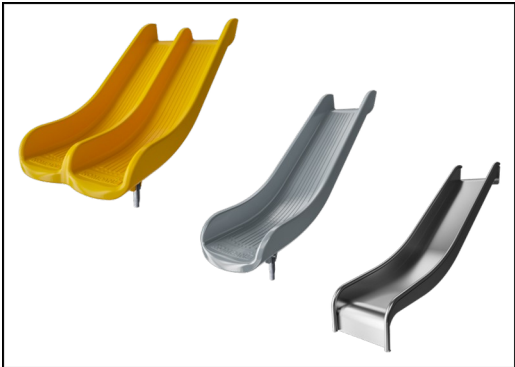


Shade sails of commercial 95 high density PE knitted specially for sunshade structures. The sails are treated with UV stabilizers to ensure a long lifetime. The sails are supported by a hot dip galvanized steel frame. Closed sail equipped with an easy take down system.

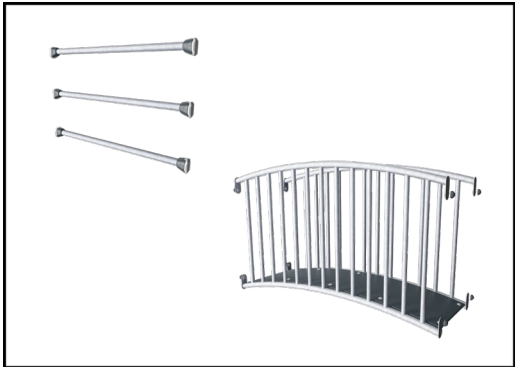
Item no. PCE105634-0901	
Installation Information	
Max. fall height	193 cm
Safety surfacing area	51.5 m²
Total installation time	16.5
Excavation volume	0.67 m³
Concrete volume	0.00 m³
Footing depth (standard)	90 cm
Shipment weight	633 kg
Anchoring options	Surface ✓ In-ground ✓
Warranty Information	
EcoCore HDPE	Lifetime
Hollow PE parts	10 years
Post	10 years
PP Decks	10 years
Spare parts guaranteed	10 years



The main posts are made of high quality pregalvanized steel with powder coated top finish. Post tops are closed with caps of UV stabilized nylon (PA6). The grey colored molded decks are made of 75% post-consumer waste PP material with a non-skid pattern and texture surface. All decks are supported by unique designed low-carbon aluminum profiles with multiple attachment options.



The slides are available in either molded PE made from 33% recycled post-consumer materials in different colors or in full AISI304 stainless steel with a thickness of 2mm.



Steel activities are hot dip galvanised and optional with a powder coated top finish.

Elevated activities	Accessible elevated activities	Accessible ground level activities	Accessible ground level play types
Present			
Required			

Sustainability Data

PCE105634



Cradle to Gate A1-A3	Total CO ₂ emission	CO ₂ e/kg	Recycled materials
	kg CO ₂ e	kg CO ₂ e/kg	%
PCE105634-0901	817.71	1.78	62.66

The overall framework applied for these factors is the Environmental Product Declaration (EPD), which quantifies "environmental information on the life cycle of a product and enable comparisons between products fulfilling the same function" (ISO, 2006). This follows the structure and applies a Life-Cycle Assessment approach to the entire Product stage from raw material through manufacturing (A1-A3))

Kompan A/S

C.F. Tietgens Boulevard 32C
DK-5220 Odense SØ
Denmark



Verification of CO₂ calculation of: Play systems



Data version no. 2023-10-05

The CO₂ calculation and data are in compliance with the principles of a carbon footprint impact according to the GHG protocol (Greenhouse Gas Protocol), Scope 3, cradle to gate related to all individual components in the product category: "Play systems" represented by item no.: PCM200321-0950.

(Scope 3 emissions include emission sources in the upstream and downstream value chain).

Date: 30. October 2023 | Valid until: 30. October 2025

Verified by:

Julie Marie Vejsgaard Larsen, LCA & EPD Consultant

Verification based on report: Validation of CO₂ calculation of 9 categories of Kompan product line, version 1.0, prepared by: Bureau Veritas HSE, Denmark: Julie M. V. Larsen.

Publication date: 30. October 2023

By Bureau Veritas HSE
www.bureauveritas.dk
+45 7731 1000

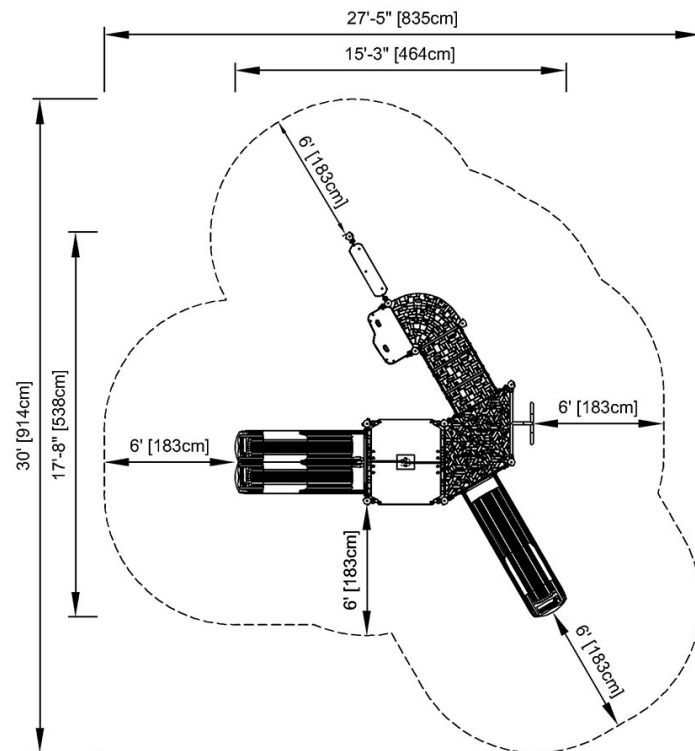


Sprinter with Roof

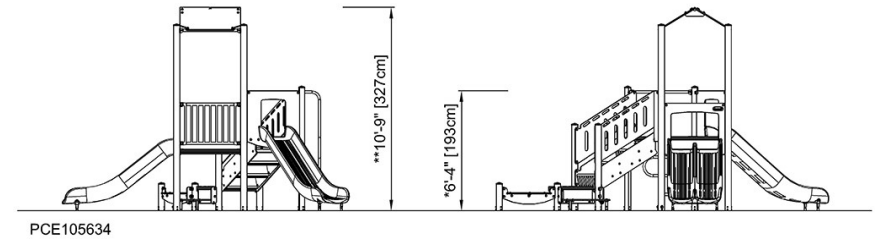
PCE105634

* Max fall height | ** Total height | *** Safety surfacing area

* Max fall height | ** Total height



PCE105634
* 6'-4" / 193cm
** 10'-9" / 327cm
*** 554.2ft² / 51.5m²



[Click to see TOP VIEW](#)

[Click to see SIDE VIEW](#)