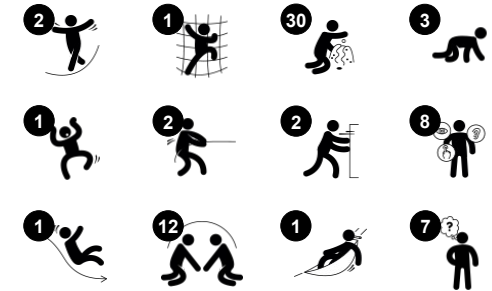


Globetrotter

PCE200431



| Item no. PCE200431-0602 | |
|-----------------------------|---|
| General Product Information | |
| Dimensions LxWxH | 21'3"x16'6"x11'1" |
| Age group | 6m - 2 |
| Play capacity (users) | 30 |
| Color options | ● ● ● |



The Globetrotter offers an irresistible play journey for younger children. Thanks to the rich variation in activities, the children have new discoveries to make, time after time. The wide selection of intriguing sensory and responsive activities stimulate the child's thinking skills. Sand scoops, gearing wheels, music panels and turning tables make great points for

concentrating on play. Additionally, they can work from both sides of the panels, stimulating social skills such as taking turns. A range of appealing physical activities train motor skills such as cross-coordination and balance: A small tunnel and slide make the beginning and end of the Globetrotter. Bouncy, swaying play events in the hammock and bridge train

balance and cross-coordination. It is great fun to bounce one another, and the understanding of cause-and-effect is also trained.

Globetrotter

PCE200431



Slide

Physical: sliding develops spatial awareness and a sense of balance. Furthermore, the core muscles are trained when sitting upright going down. **Social-Emotional:** empathy stimulated by turn-taking. **Cognitive:** young children develop their understanding of space, speed and distances when sliding down quickly.



Xylophone music panel

Social-Emotional: invites social interaction and co-creation for more children, on both sides. **Cognitive:** understanding of cause and effect when striking tubes and creating sound. **Creative:** the creation of different intensity and tonality stimulates creative skills.



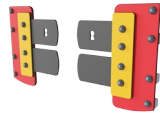
Talk tube

Social-Emotional: encourages communication and social interaction. **Cognitive:** evokes curiosity and stimulates an understanding of cause and effect and object permanence: objects and people still exist when out of sight.



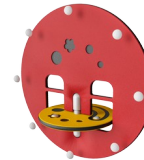
Bubble Window

Social-Emotional: invites interaction between outside and inside. **Cognitive:** distorts the sound of the voice, developing logical thinking.



Flap door

Physical: tactile stimulation from leaning the body through rubber doors. **Cognitive:** suggests a theme and supports dramatic play, which stimulates language and communication skills.



Turn table panel

Social-Emotional: spurs cooperation with its dual-sidedness. **Cognitive:** understanding of object permanence when things are turned to the other side of panel and re-appear.



Hammock

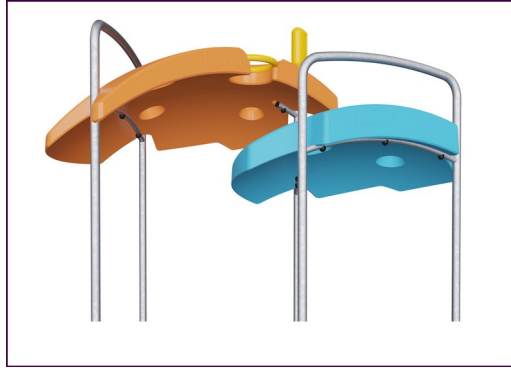
Physical: coordination and sense of balance when swaying. **Social-Emotional:** meeting, pushing friends gently back and forth, turn-taking. **Cognitive:** for toddlers cause and effect understanding.

Globetrotter

PCE200431



The Curved ELEMENTS panels are molded of UV stabilized recyclable PE with multiple options for in-built play features that also ensures a strong panel solution. Straight panels are made of KOMPAN 19mm PE EcoCore™ which is a highly durable, eco-friendly and recyclable material.



The ELEMENTS roofs are made of recyclable PE made from 33% post consumer recycled materials with a minimum wall thickness of 5 mm to ensure high durability in all climates around the world. The steel pipes are hot dip galvanised inside and outside for maximum durability.



ELEMENTS products are available in three different color combinations: classic blue & green, blossom orange & yellow, nature lime and green.

Item no. PCE200431-0602

Installation Information

| | |
|--------------------------|--------------------------|
| Max. fall height | 1'11" |
| Safety surfacing area | 710ft ² |
| Total installation time | 31.5 |
| Excavation volume | 0.73yd ³ |
| Concrete volume | 0.09yd ³ |
| Footing depth (standard) | 2'9" |
| Shipment weight | 1946lbs |
| Anchoring options | Surface ✓ In-ground ✓ |

Warranty Information

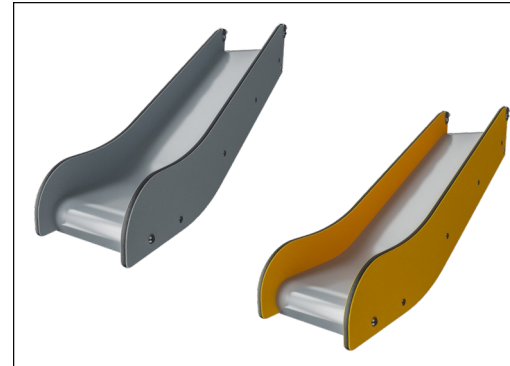
| | |
|--------------------------|----------|
| Curved Panels | 10 Years |
| EcoCore HDPE | Lifetime |
| Membrane | 2 Years |
| Post | 10 Years |
| Spare Parts Availability | 10 Years |



The main posts are made of high quality pregalvanized steel with powder coated top finish. Post tops are closed with caps of UV stabilized nylon (PA6). The grey colored molded decks are made of 75% post-consumer waste PP material with a non-skid pattern and texture surface. All decks are supported by unique designed low-carbon aluminum profiles with multiple attachment options.



ELEMENTS rubber membranes are conveyor belt made of layers of rubber mixed of natural rubber and SBR rubber, and embedded with layers of armouring made of woven PE and PA. The thickness 8mm ensures high durability in any environment.



The special slide for ages 2 and under as specified in ASTM F2373 is made of EcoCore™ sides and a molded PE slide bed

| Elevated activities 0 | Accessible elevated activities | Accessible ground level activities | Accessible ground level play types |
|-----------------------|--------------------------------|------------------------------------|------------------------------------|
| Present | 0 | 0 | 0 |
| Required | 0 | 0 | 0 |

**ASTM
F2373**
compliant

Sustainability Data

PCE200431



| Cradle to Gate A1-A3 | Total CO ₂ emission | CO ₂ e/kg | Recycled materials |
|-----------------------|--------------------------------|-------------------------|--------------------|
| | kg CO ₂ e | kg CO ₂ e/kg | % |
| PCE200431-0602 | 1,878.08 | 2.54 | 49.55 |

The overall framework applied for these factors is the Environmental Product Declaration (EPD), which quantifies "environmental information on the life cycle of a product and enable comparisons between products fulfilling the same function" (ISO, 2006). This follows the structure and applies a Life-Cycle Assessment approach to the entire Product stage from raw material through manufacturing (A1-A3))

Kompan A/S
 C.F. Tietgens Boulevard 32C
 DK-5220 Odense SØ
 Denmark



Verification of CO₂ calculation of: Play systems



Data version no. 2023-10-05

The CO₂ calculation and data are in compliance with the principles of a carbon footprint impact according to the GHG protocol (Greenhouse Gas Protocol), Scope 3, cradle to gate related to all individual components in the product category: "Play systems" represented by item no.: PCM200321-0950.

(Scope 3 emissions include emission sources in the upstream and downstream value chain).

Date: 30. October 2023 | Valid until: 30. October 2025

Verified by:

Julie Marie Vejsgaard Larsen, LCA & EPD Consultant

Verification based on report: Validation of CO₂ calculation of 9 categories of Kompan product line, version 1.0, prepared by: Bureau Veritas HSE, Denmark: Julie M. V. Larsen.

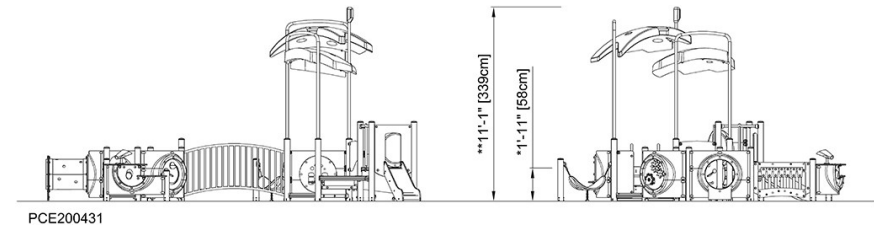
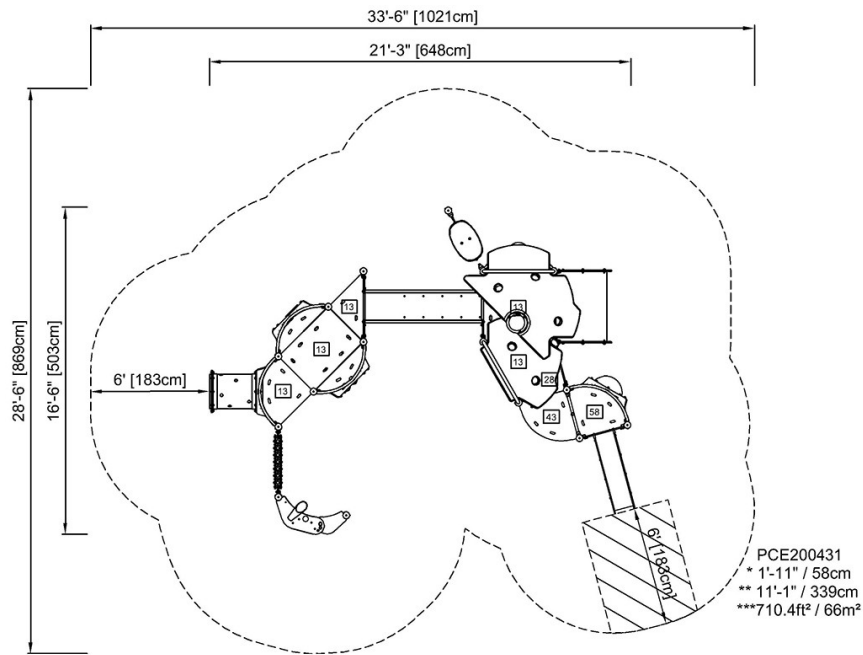
Publication date: 30. October 2023

By Bureau Veritas HSE
 www.bureauveritas.dk
 +45 7731 1000



* Max fall height | ** Total height | *** Safety surfacing area

* Max fall height | ** Total height



[Click to see TOP VIEW](#)

[Click to see SIDE VIEW](#)