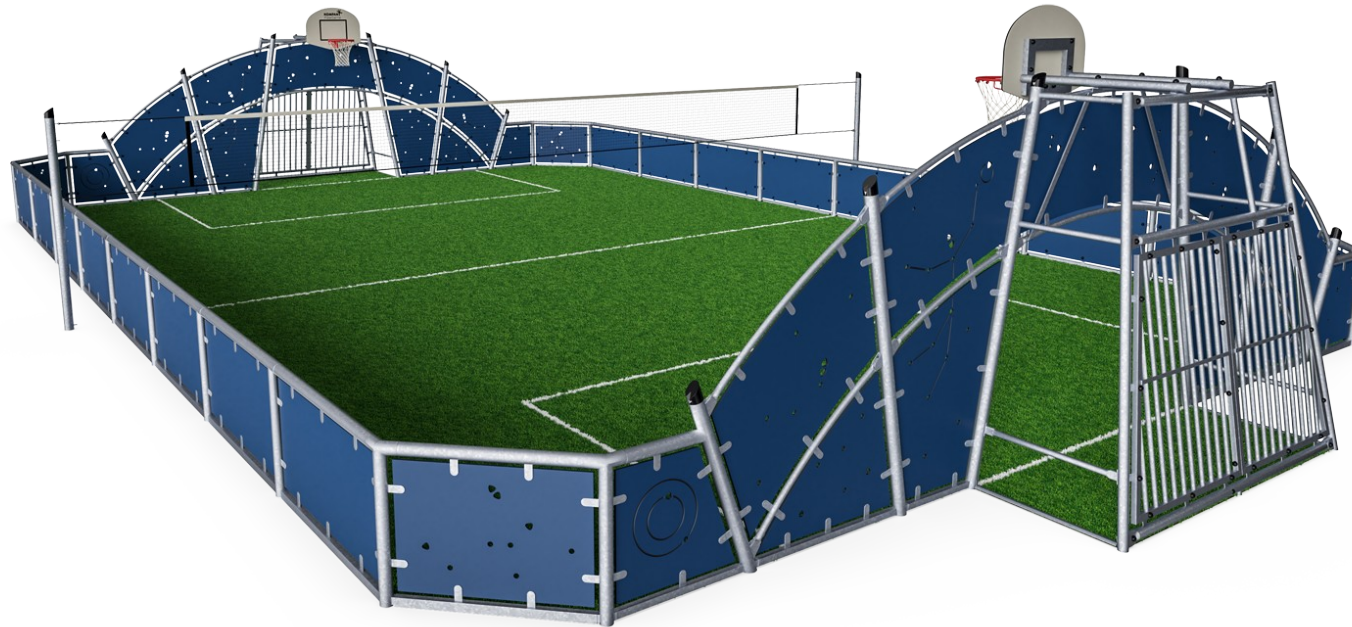


Cosmos, 12x20m

FRE2110

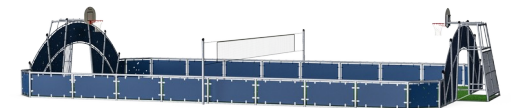
KOMPANI
Let's play



Item no. FRE2110-3317

General Product Information

Dimensions LxWxH	2062x1300x370 cm
Age group	3+
Play capacity (users)	-
Colour options	●



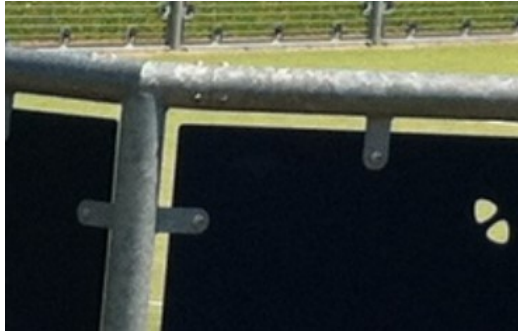
A multisport pitch includes two goals with built in basketball hoops and a height adjustable multisport net in the middle of the play area. The panels in the goal area have engraved sport motifs. The goals have removable anti-moped barriers for wheelchair access and the lower barriers have lower profile for grass edge protection with water drainage holes. The pitch

is based on a modular system. The dimensions of the pitch can be customized according to individual requirements. The HD polyethylene panels can be supplied in different standard colors. The pitch can also be equipped with a number of additional activities.



Cosmos, 12x20m

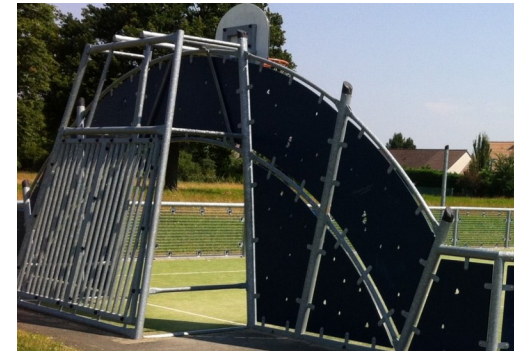
FRE2110



All steel components are manufactured from carbon steel, welding's according EN ISO 5817 & Hot dip galvanised (HDG) according to ISO1461. This process ensures good protection in all circumstances.



The HDPE panels are standard available in Night Sky Blue, but multiple colours can be requested. To increase the design and play value the HDPE panels can have patterns or logo's engraved.



Classic goals are equipped as standard with nylon net or with reinforced nylon or steel bars as options. Cosmos goals are with metal bars.

Item no. FRE2110-3317

Installation Information

Max. fall height	0 cm
Safety surfacing area	0.0 m ²
Total installation time	69.7
Excavation volume	3.33 m ³
Concrete volume	3.25 m ³
Footing depth (standard)	70 cm
Shipment weight	3,578 kg
Anchoring options	In-ground ✓

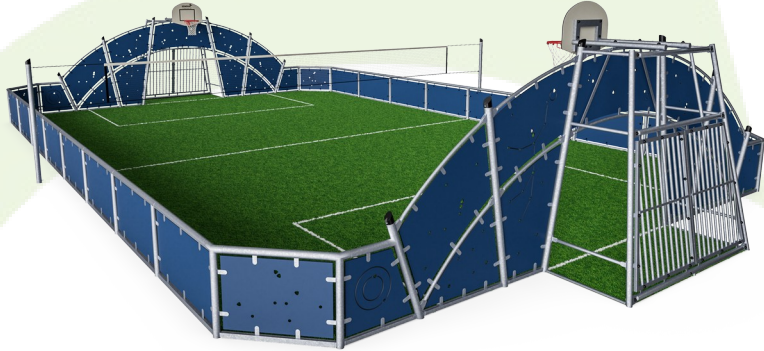
Warranty Information

EcoCore HDPE	Lifetime
Hot dip galvanised steel	Lifetime



Sustainability Data

FRE2110



Cradle to Gate A1-A3

Total CO ₂ emission	CO ₂ e/kg	Recycled materials
kg CO ₂ e	kg CO ₂ e/kg	%
FRE2110-3317	5,815.27	1.94
		65.68

The overall framework applied for these factors is the Environmental Product Declaration (EPD), which quantifies "environmental information on the life cycle of a product and enable comparisons between products fulfilling the same function" (ISO, 2006). This follows the structure and applies a Life-Cycle Assessment approach to the entire Product stage from raw material through manufacturing (A1-A3))

Kompan A/S
 C.F. Tietgens Boulevard 32C
 DK-5220 Odense SØ
 Denmark



Verification of CO₂ calculation of: Sport



Data version no. 2023-10-05

The CO₂ calculation and data are in compliance with the principles of a carbon footprint impact according to the GHG protocol (Greenhouse Gas Protocol), Scope 3, cradle to gate related to all individual components in the product category: "Sport" represented by item no.: FRE600202-0901.

(Scope 3 emissions include emission sources in the upstream and downstream value chain).

Date: 30. October 2023 | Valid until: 30. October 2025

Verified by:

Julie Marie Vejsgaard Larsen, LCA & EPD Consultant

Verification based on report: Validation of CO₂ calculation of 9 categories of Kompan product line, version 1.0, prepared by: Bureau Veritas HSE, Denmark: Julie M. V. Larsen.

Publication date: 30. October 2023

By Bureau Veritas HSE
 www.bureauveritas.dk
 +45 7731 1000

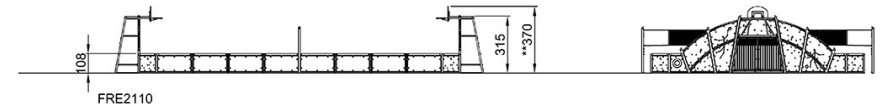
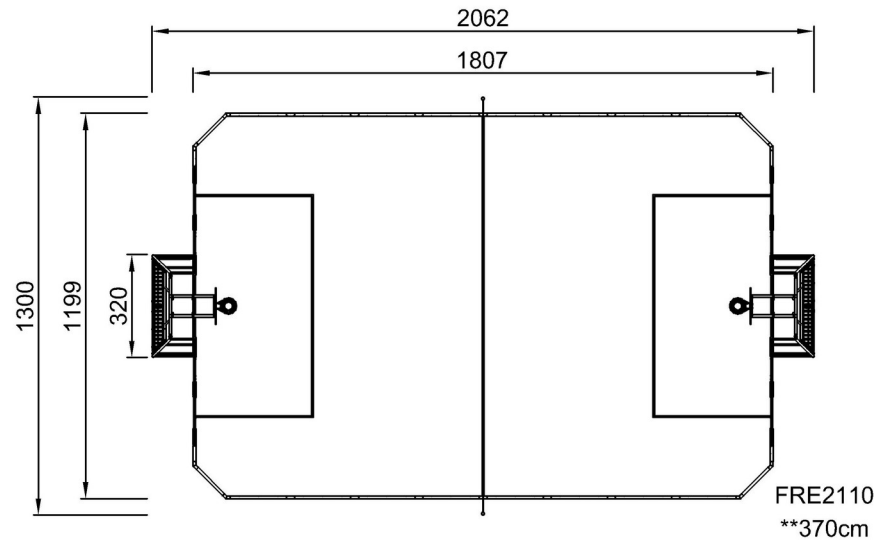


Cosmos, 12x20m

FRE2110

* Max fall height | ** Total height | *** Safety surfacing area

* Max fall height | ** Total height



[Click to see TOP VIEW](#)

[Click to see SIDE VIEW](#)