
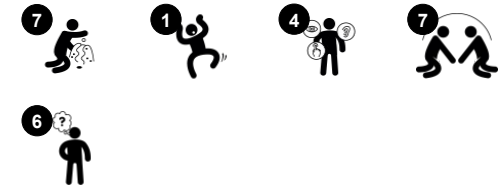


# Toddler flower house

M411



| Item no. M41100-3118P       |   |
|-----------------------------|---|
| General Product Information |   |
| Dimensions LxWxH            | 4'7"x3'10"x3'11"  |
| Age group                   | 6m - 4  |
| Play capacity (users)       | 8   |
| Color options               |  |



Wow! This toddler-sized Flower House is rich in activities that attract and retain young children in play. The varied play elements support the child's social-emotional, cognitive, and creative development. The range in size of openings and semi-open sides encourage play cooperation from the inside to the outside, increasing the number of children who can

participate in a way that makes sense. There are a number of manipulative play items that respond to the actions of the child: the turning desk, spheres running in grooves, and door lock. Children begin to understand and practice causal relationships when items respond to the child's actions. This understanding motivates talking and stimulates language development.

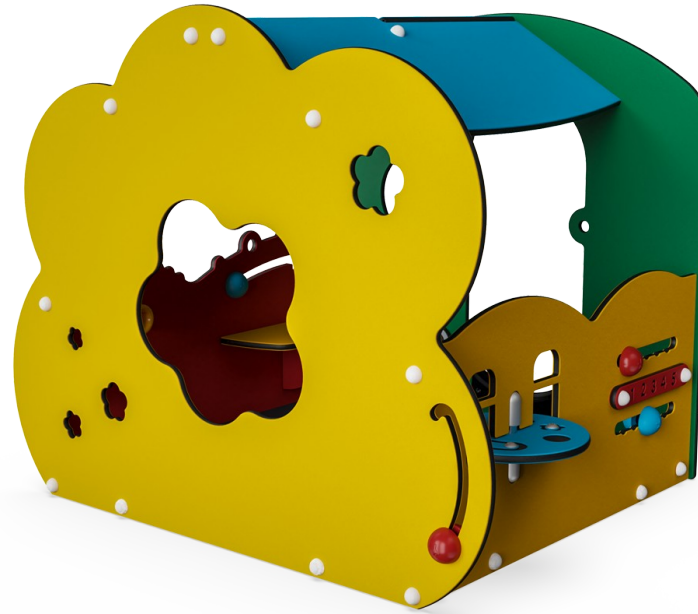
# Toddler flower house

M411



## Theme

**Cognitive:** suggests a theme and supports dramatic play, which stimulates language and communication skills.



## Desk

**Social-Emotional:** fine meeting place and a space creator. Sharing and cooperation from both sides create a social scenario that supports communication and cooperation.



## Themed element

**Cognitive:** sets a tangible theme and so spurs dramatic play. Dramatic play is a great trainer of language skills.



## Turn disk and sound creator

**Social-Emotional:** spurs group play and conversations with its dual-sidedness.  
**Cognitive:** logical thinking, understanding numeracy.  
**Creative:** creating sounds when the spheres run through grooves.



## Play sphere

**Social-Emotional:** can be played from both sides, encouraging cooperation.  
**Cognitive:** cause and effect understanding.  
**Creative:** leave a mark and place the spheres at different positions.



## Megaphone

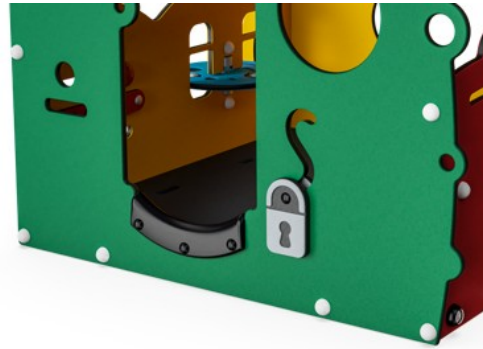
**Social-Emotional:** inspires communication and turn-taking skills.  
**Cognitive:** distortion of sound evokes curiosity and stimulates an understanding of cause and effect.

# Toddler flower house

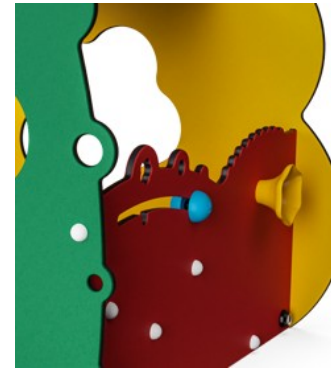
M411



Panels of 19mm EcoCore™. EcoCore™ is a highly durable, eco friendly material, which is not only recyclable after use, but also consists of a core produced from 100% recycled material.



Floor is made of HPL with a thickness 10 mm and non skid surface texture according to EN 438-6. KOMPAN HPL has high wearing strength to ensure long lifetime in all climates.



Play activities like the Megaphone are made of injection molded high quality nylon (PA6). PA6 has good wearing and impact strength and is UV stabilized.

| Item no. M41100-3118P    |                          |
|--------------------------|--------------------------|
| Installation Information |                          |
| Max. fall height         | 0'0"                     |
| Safety surfacing area    | 0ft²                     |
| Total installation time  | 5.6                      |
| Excavation volume        | 0.12yd³                  |
| Concrete volume          | 0yd³                     |
| Footing depth (standard) | 1'1"                     |
| Shipment weight          | 314lbs                   |
| Anchoring options        | In-ground ✓<br>Surface ✓ |
| Warranty Information     |                          |
| EcoCore HDPE             | Lifetime                 |
| HPL decks                | 15 Years                 |
| Movable parts            | 2 Years                  |
| Spare Parts Availability | 10 Years                 |



Edge protection is made of PUR. It retains its properties in the temperature range of -30°C to 60°C. Material is UV stabilized.



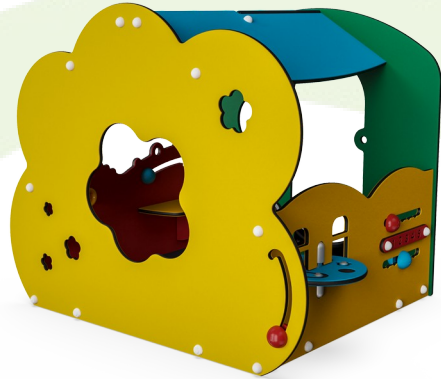
KOMPAN GreenLine versions are designed with the most environmentally friendly materials with the lowest possible CO2e emission factor such as EcoCore™ panels of 100% post-consumer recycled ocean waste.

| Elevated activities 0 | Accessible elevated activities | Accessible ground level activities | Accessible ground level play types |
|-----------------------|--------------------------------|------------------------------------|------------------------------------|
| Present               | 0                              | 1                                  | 1                                  |
| Required              | 0                              | 1                                  | 1                                  |



# Sustainability Data

M411



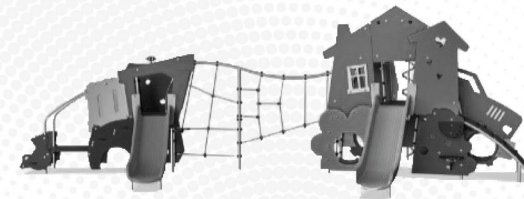
| Cradle to Gate A1-A3 | Total CO <sub>2</sub> emission | CO <sub>2</sub> e/kg    | Recycled materials |
|----------------------|--------------------------------|-------------------------|--------------------|
|                      | kg CO <sub>2</sub> e           | kg CO <sub>2</sub> e/kg | %                  |
| <b>M41100-3118P</b>  | 130.68                         | 1.22                    | 73.51              |

The overall framework applied for these factors is the Environmental Product Declaration (EPD), which quantifies "environmental information on the life cycle of a product and enable comparisons between products fulfilling the same function" (ISO, 2006). This follows the structure and applies a Life-Cycle Assessment approach to the entire Product stage from raw material through manufacturing (A1-A3))

**Kompan A/S**  
 C.F. Tietgens Boulevard 32C  
 DK-5220 Odense SØ  
 Denmark



## Verification of CO<sub>2</sub> calculation of: Themed play systems



Data version no. 2023-10-05

The CO<sub>2</sub> calculation and data are in compliance with the principles of a carbon footprint impact according to the GHG protocol (Greenhouse Gas Protocol), Scope 3, cradle to gate related to all individual components in the product category: "Themed play systems" represented by item no.: MSC641100-3717P.

(Scope 3 emissions include emission sources in the upstream and downstream value chain).

**Date: 30. October 2023 | Valid until: 30. October 2025**

Verified by:

Julie Marie Vejsgaard Larsen, LCA & EPD Consultant

Verification based on report: Validation of CO<sub>2</sub> calculation of 9 categories of Kompan product line, version 1.0, prepared by: Bureau Veritas HSE, Denmark: Julie M. V. Larsen.

**Publication date: 30. October 2023**

By Bureau Veritas HSE  
 www.bureauveritas.dk  
 +45 7731 1000

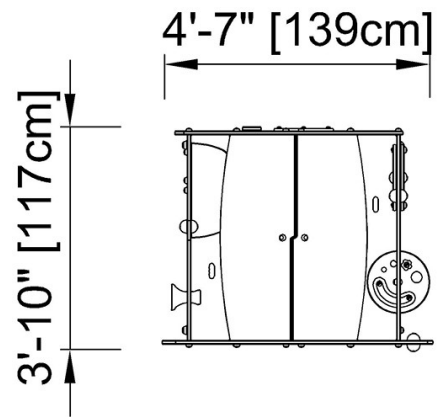


# Toddler flower house

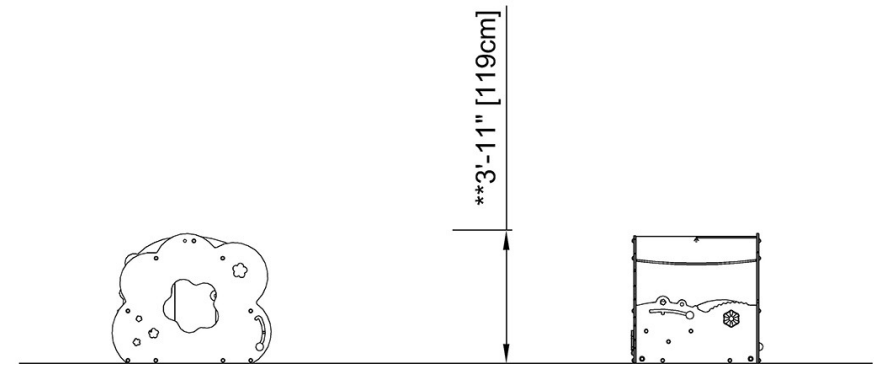
M411

\* Max fall height | \*\* Total height | \*\*\* Safety surfacing area

\* Max fall height | \*\* Total height



M41101  
\*\* 3'-11" / 119cm



M41101

[Click to see TOP VIEW](#)

[Click to see SIDE VIEW](#)