

Triple Tower Shading

PCM311121



| Item no. PCM311121-0904 | |
|-----------------------------|----------------|
| General Product Information | |
| Dimensions LxWxH | 893x578x501 cm |
| Age group | 4+ |
| Play capacity (users) | 36 |
| Color options | |



This activity magnet is for intense rough-and-tumble and social play. With its ample space for socializing, its play variation and inclusive elements, this Triple Tower with Shade motivate all children to hours of up-scaled play together. The three connected decks invite group play on elevated as well as ground level, allowing for all abilities to join in the play. The

platforms are attractive destinations, that can be accessed by accessible stairway, wobbly links and a climbing net. The varied egresses provide variation in thrill. The Wackle bridge is a great team activity, stimulating balance and social play. The play variety tick the boxes for Agility, Balance and Coordination, fundamental to e.g. navigate traffic safely. It provides muscle

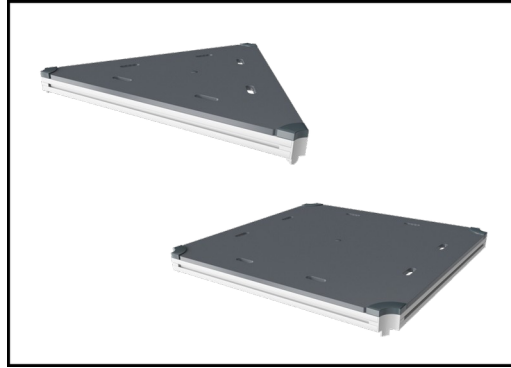
training of core, legs and arms. The sensory details stimulate thinking skills. Meeting corners encourage socializing. A formula to make children play on and on.

Triple Tower Shading

PCM311121



Panels of 19mm EcoCore™. EcoCore™ is a highly durable, eco friendly material, which is not only recyclable after use, but also consists of material produced from +95% recycled post consumer material from food packing waste.



All decks are supported by unique designed low-carbon aluminum profiles with multiple attachment options. The grey colored molded decks are made of 75% post-consumer waste PP material with a non-skid pattern and texture surface.

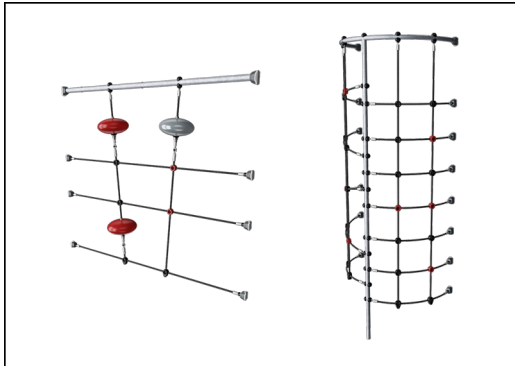


Main posts with hot dip galvanized steel footing are available in different materials: Pressure impregnated pine wood posts. Pre-galvanized inside and outside with powder coated top finish steel posts. Lead free aluminum with color anodized top finish. Greenline TexMade posts of 95% post-consumer recycled PE and textile waste.

Item no. PCM311121-0904

Installation Information

| | |
|--------------------------|--------------------------|
| Max. fall height | 239 cm |
| Safety surfacing area | 69.7 m ² |
| Total installation time | 39.8 |
| Excavation volume | 2.81 m ³ |
| Concrete volume | 0.94 m ³ |
| Footing depth (standard) | 90 cm |
| Shipment weight | 1,481 kg |
| Anchoring options | Surface ✓ In-ground ✓ |



Ropes of UV-stabilized PES rope strands with inner steel cable reinforcement. The polyester yarn is made from +95% post-consumer materials and is inductively melted onto each strand.



The slides can be chosen in six different colors and three materials: Straight or curved one-piece molded PE slides, made from 33% recycled post-consumer materials in different colours. Combined EcoCore™ sides and stainless-steel. Full stainless steel in one piece design for more vandalism proof solutions.



KOMPAN GreenLine versions are designed with ultimate environmentally friendly materials with lowest possible CO2e emission factor. TexMade post, EcoCore™ panels of 95% post-consumer recycled waste and molded PP decks.



Sustainability Data

PCM311121



| Cradle to Gate A1-A3 | Total CO ₂ emission | CO ₂ e/kg | Recycled materials |
|-----------------------|--------------------------------|-------------------------|--------------------|
| | kg CO ₂ e | kg CO ₂ e/kg | % |
| PCM311121-0951 | 2,239.50 | 1.84 | 67.80 |
| PCM311121-0904 | 2,785.50 | 2.66 | 53.20 |

The overall framework applied for these factors is the Environmental Product Declaration (EPD), which quantifies "environmental information on the life cycle of a product and enable comparisons between products fulfilling the same function" (ISO, 2006). This follows the structure and applies a Life-Cycle Assessment approach to the entire Product stage from raw material through manufacturing (A1-A3))

Kompan A/S
 C.F. Tietgens Boulevard 32C
 DK-5220 Odense SØ
 Denmark



Verification of CO₂ calculation of: Play systems



Data version no. 2023-10-05

The CO₂ calculation and data are in compliance with the principles of a carbon footprint impact according to the GHG protocol (Greenhouse Gas Protocol), Scope 3, cradle to gate related to all individual components in the product category: "Play systems" represented by item no.: PCM200321-0950.

(Scope 3 emissions include emission sources in the upstream and downstream value chain).

Date: 30. October 2023 | Valid until: 30. October 2025

Verified by:

Julie Marie Vejsgaard Larsen, LCA & EPD Consultant

Verification based on report: Validation of CO₂ calculation of 9 categories of Kompan product line, version 1.0, prepared by: Bureau Veritas HSE, Denmark: Julie M. V. Larsen.

Publication date: 30. October 2023

By Bureau Veritas HSE
 www.bureauveritas.dk
 +45 7731 1000

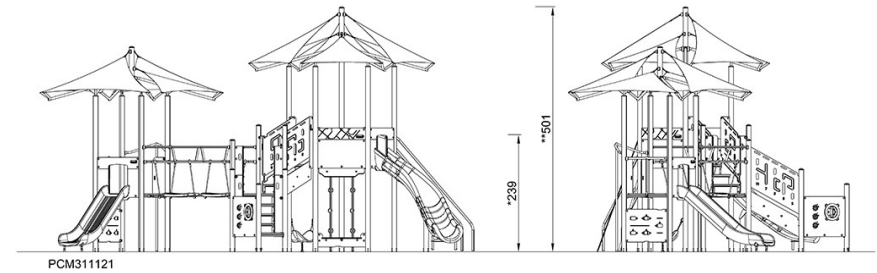
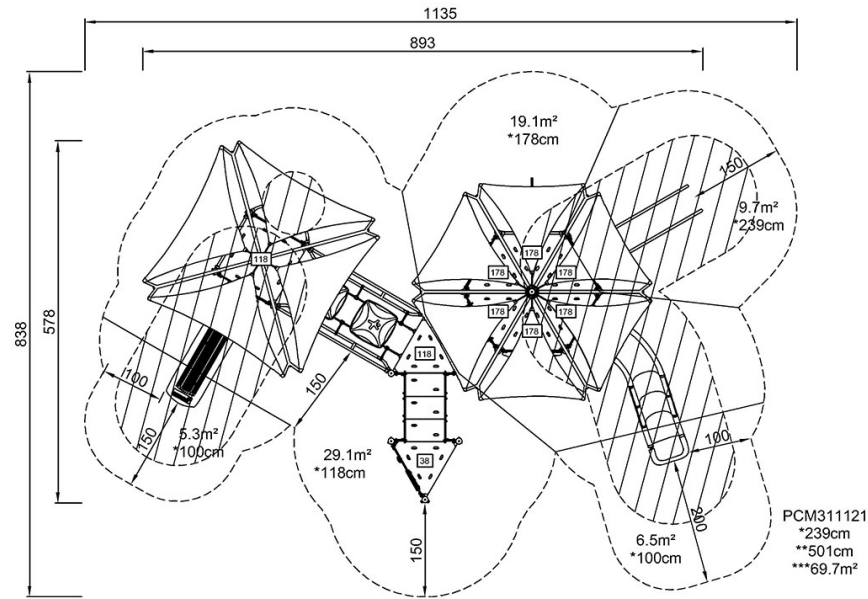


Triple Tower Shading

PCM311121

* Max fall height | ** Total height | *** Safety surfacing area

* Max fall height | ** Total height



[Click to see TOP VIEW](#)

[Click to see SIDE VIEW](#)