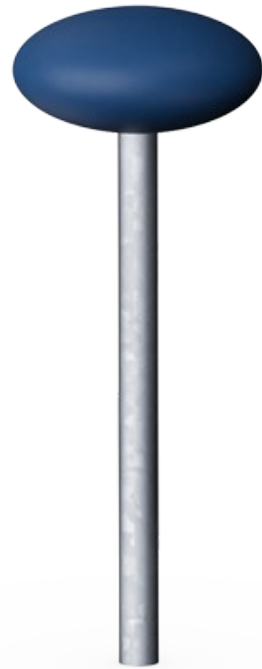
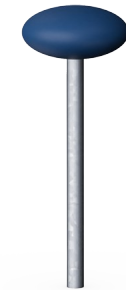


# Sprinkhaan

FRE3044



Item nummer FRE3044-3517	
<b>Algemene Product Informatie</b>	
Afmetingen LxBxH	30x30x80 cm
Leeftijdsgroep	3+
Speelcapaciteit	-
Kleuropties	●



Deze sprinkhaan paal met afgeronde zitplaatsen biedt de mogelijkheid om op een speelse manier te zitten en te kijken naar anderen. Maar je kunt ze ook in een circuit plaatsen om bokspringen te oefenen

# Sprinkhaan

FRE3044



The top seat is 15 cm high and has a diameter of 30. cm. The top seat is made of PE and has a fine structure which makes it comfortable for the hands.



The tube of the Grasshopper is made of a Ø48,3 x 2,9mm, hot dip galvanized steel tube. The top seat is connected with a M12 bolt and covered by a PE top cap.

Item nummer FRE3044-3517

## Installatie informatie

Max. valhoogte	80 cm
Veiligheidszone	8,6 m <sup>2</sup>
Totale installatietijd	0,3
Graafwerk (vol.)	0,20 m <sup>3</sup>
Benodigd beton	0,00 m <sup>3</sup>
Verankeringsdiepte	80 cm
Verzendingsgewicht	14 kg
Verankeringsopties	In-ground ✓

## Garantie informatie

HDG post	Levenslang
Holle PE-onderdelen	10 jaar
Gegarandeerde reserveonderdelen	10 jaar



# Sustainability Data

FRE3044



Cradle to Gate A1-A3	Total CO <sub>2</sub> emission	CO <sub>2</sub> e/kg	Recycled materials
	kg CO <sub>2</sub> e	kg CO <sub>2</sub> e/kg	%
<b>FRE3044-3517</b>	26,58	2,52	48,44

The overall framework applied for these factors is the Environmental Product Declaration (EPD), which quantifies "environmental information on the life cycle of a product and enable comparisons between products fulfilling the same function" (ISO, 2006). This follows the structure and applies a Life-Cycle Assessment approach to the entire Product stage from raw material through manufacturing (A1-A3))

**Kompan A/S**  
C.F. Tietgens Boulevard 32C  
DK-5220 Odense SØ  
Denmark



## Verification of CO<sub>2</sub> calculation of: Sport



Data version no. 2023-10-05

The CO<sub>2</sub> calculation and data are in compliance with the principles of a carbon footprint impact according to the GHG protocol (Greenhouse Gas Protocol), Scope 3, cradle to gate related to all individual components in the product category: "Sport" represented by item no.: FRE600202-0901.

(Scope 3 emissions include emission sources in the upstream and downstream value chain).

**Date: 30. October 2023 | Valid until: 30. October 2025**

Verified by:

Julie Marie Vejsgaard Larsen, LCA & EPD Consultant

Verification based on report: Validation of CO<sub>2</sub> calculation of 9 categories of Kompan product line, version 1.0, prepared by: Bureau Veritas HSE, Denmark: Julie M. V. Larsen.

**Publication date: 30. October 2023**

By Bureau Veritas HSE  
www.bureauveritas.dk  
+45 7731 1000

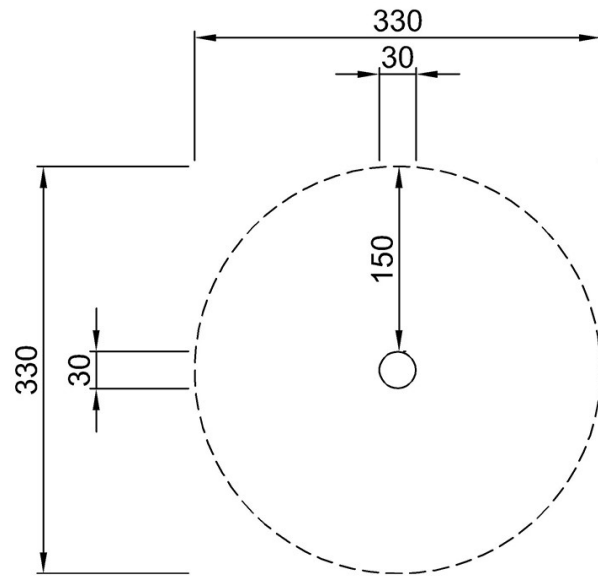


# Sprinkhaan

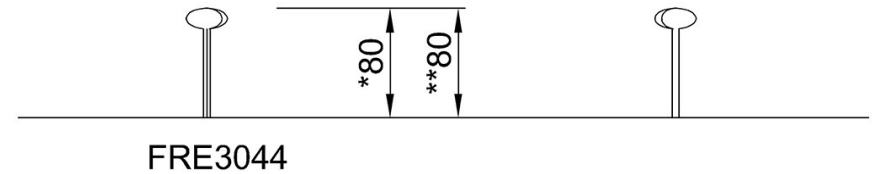
FRE3044

Max. valhoogte | Totale Hoogte | Veiligheidszone

Max. valhoogte | Totale Hoogte



FRE3044-Single  
\*80cm  
\*\*80cm  
\*\*\*8.6m<sup>2</sup>



FRE3044

[Bekijk BOVENAANZICHT](#)

[Bekijk ZIJAANZICHT](#)