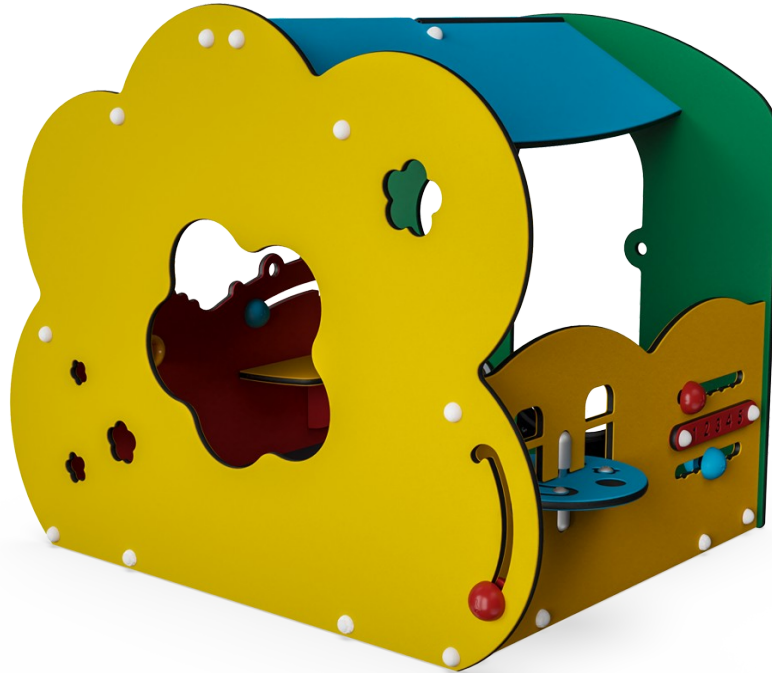
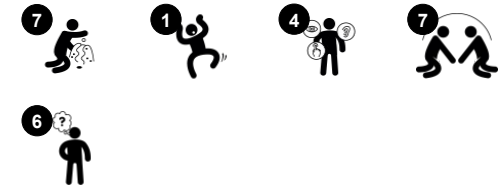


Toddler Flower House

M411



Item no. M41100-3118P	
General Product Information	
Dimensions LxWxH	139x117x119 cm
Age group	6m+
Play capacity (users)	8
Colour options	



Wow! This toddler-sized Flower House is rich in activities that attract and hold young children in play, repeatedly. The varied play elements support the child's social-emotional, cognitive, and creative development. The many small or big openings and semi-open sides encourage play co-operation from the inside to the outside, increasing the number of children who

can participate in a way that makes sense. There is a number of manipulative play items that respond to the actions of the child: turning desk, spheres running in grooves, and door lock. When items respond to the child's actions it stimulates an understanding of causal relations. It motivates talking and stimulates language development.



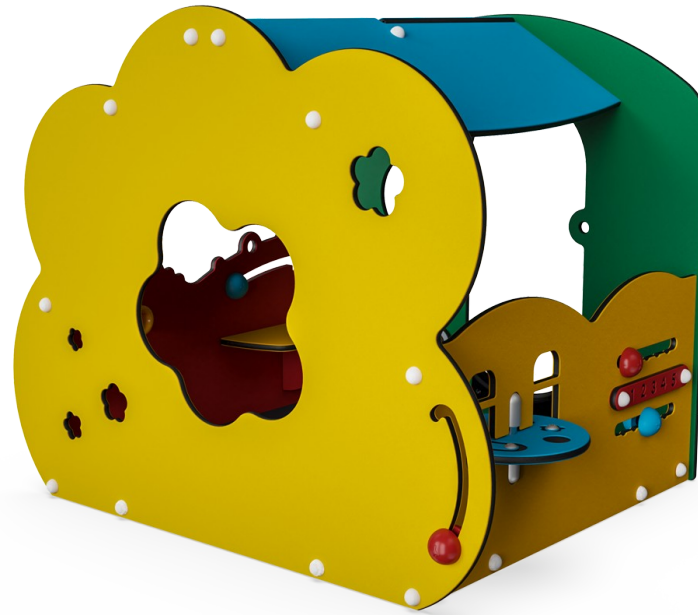
Toddler Flower House

M411



Theme

Cognitive: suggests a theme and supports dramatic play, which stimulates language and communication skills.



Desk

Social-Emotional: fine meeting place and a space creator. Sharing and cooperation from both sides to create a social scenario that supports communication and cooperation.



Themed element

Cognitive: set a tangible theme and thus spur dramatic play. Dramatic play is a great trainer of language skills.



Turn disk and sound creator

Social-Emotional: spurs group play and conversations with its two-sidedness.

Cognitive: logical thinking, understanding numeracy. **Creative:** creating sounds when the spheres run through grooves.



Play sphere

Social-Emotional: can be played from both sides, encouraging cooperation. **Cognitive:** cause and effect understanding. **Creative:** leave a mark and place the spheres at different positions.



Megaphone

Social-Emotional: inspires communication and turn-taking skills. **Cognitive:** distortion of sound evokes curiosity and stimulates an understanding of cause and effect.

Toddler Flower House

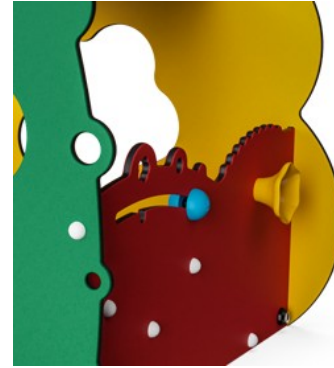
M411



Panels of 19mm EcoCore™. EcoCore™ is a highly durable, eco-friendly material, which is not only recyclable after use but also consists of a core produced from 100% recycled material.



The floor is made of HPL with a thickness of 10 mm and non-skid surface texture. KOMPAN's HPL is highly durable to ensure longevity against wear and tear.



Play activities like the megaphone are made of injection moulded high-quality nylon (PA6) which has excellent wearing and impact strength and is UV stabilised.

Item no. M41100-3118P	
Installation Information	
Max. fall height	30 cm
Safety surfacing area	16.3 m ²
Total installation time	5.6
Excavation volume	0.09 m ³
Concrete volume	0.00 m ³
Footing depth (standard)	34 cm
Shipment weight	153 kg
Anchoring options	In-ground ✓ Surface ✓
Warranty Information	
EcoCore HDPE	Lifetime
HPL Decks	15 years
Movable Parts	2 years
Spare Parts Guarantee	10 years



Edge protection is made of PUR. It retains its properties in the temperature range of -30°C to 60°C. Material is UV stabilised.

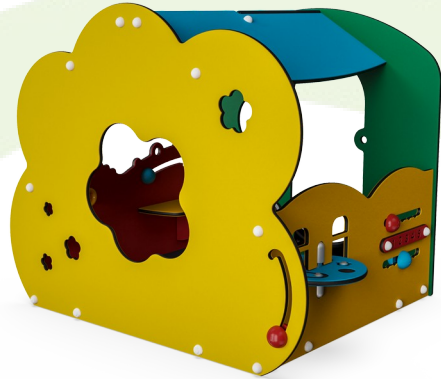


KOMPAN GreenLine versions are designed with ultimate environmentally friendly materials with the lowest possible CO₂e emission factor such as EcoCore™ panels of 100% post consumer recycled ocean waste.



Sustainability Data

M411



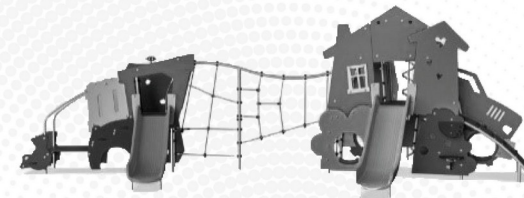
Cradle to Gate A1-A3	Total CO ₂ emission	CO ₂ e/kg	Recycled materials
	kg CO ₂ e	kg CO ₂ e/kg	%
M41100-3118P	130.68	1.22	73.51

The overall framework applied for these factors is the Environmental Product Declaration (EPD), which quantifies "environmental information on the life cycle of a product and enable comparisons between products fulfilling the same function" (ISO, 2006). This follows the structure and applies a Life-Cycle Assessment approach to the entire Product stage from raw material through manufacturing (A1-A3))

Kompan A/S
 C.F. Tietgens Boulevard 32C
 DK-5220 Odense SØ
 Denmark



Verification of CO₂ calculation of: Themed play systems



Data version no. 2023-10-05

The CO₂ calculation and data are in compliance with the principles of a carbon footprint impact according to the GHG protocol (Greenhouse Gas Protocol), Scope 3, cradle to gate related to all individual components in the product category: "Themed play systems" represented by item no.: MSC641100-3717P.

(Scope 3 emissions include emission sources in the upstream and downstream value chain).

Date: 30. October 2023 | Valid until: 30. October 2025

Verified by:

Julie Marie Vejsgaard Larsen, LCA & EPD Consultant

Verification based on report: Validation of CO₂ calculation of 9 categories of Kompan product line, version 1.0, prepared by: Bureau Veritas HSE, Denmark: Julie M. V. Larsen.

Publication date: 30. October 2023

By Bureau Veritas HSE
 www.bureauveritas.dk
 +45 7731 1000

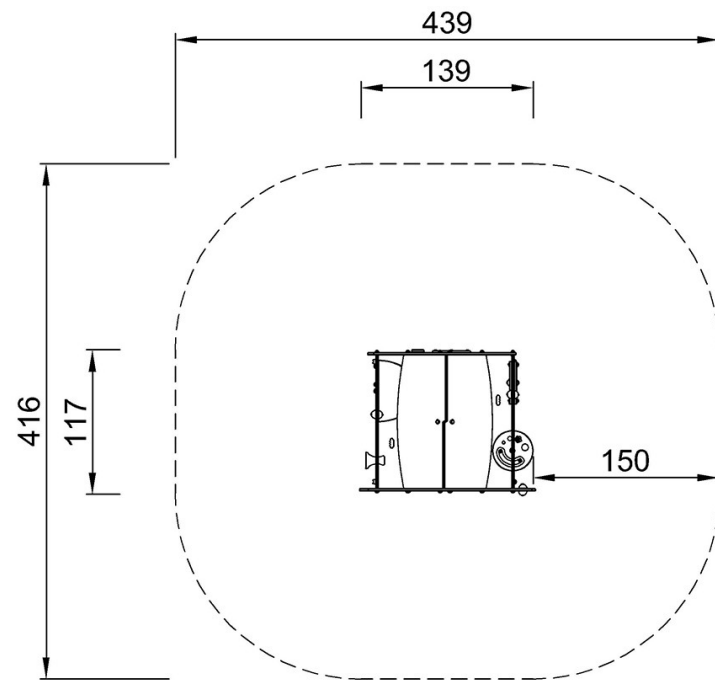


Toddler Flower House

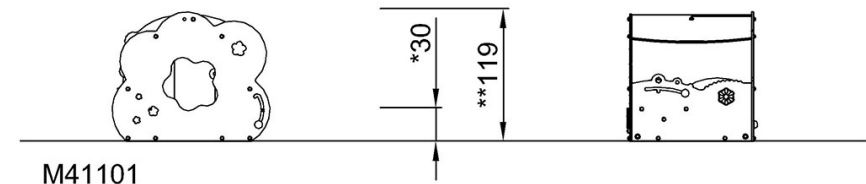
M411

* Max fall height | ** Total height | *** Safety surfacing area

* Max fall height | ** Total height



M41101
*30cm
**119cm
***16.3m²



[Click to see TOP VIEW](#)

[Click to see SIDE VIEW](#)