

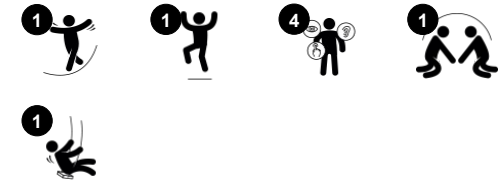


# One Seat Swing

NRO901



Item no. NRO901-1001	
<b>General Product Information</b>	
Dimensions LxWxH	175x30x195 cm
Age group	2+
Play capacity (users)	1
Color options	 



The sturdy rubber seat of the One Seat Swing is an irresistible invitation for the child to lean in and swing. Children simply love to swing on the One Seat Swing, there are many reasons for this, firstly; when the swing seat responds back to the movements of the child, this cause and effect learning can be repeated and challenged each time. Secondly, the rubber seat is placed

at the right height for a child to lie on their stomach, and push their feet to feel the swinging motion. This trains the child's motor skills, specifically the sense of balance and space. These are both fundamental to navigate the surroundings securely. The emotional value of swinging independently is priceless for toddlers' self esteem. widening their physical

comfort zone. Parents and peers can easily join the fun.



# One Seat Swing

NRO901



All Organic Robinia products by KOMPAN are made of Robinia wood from sustainable European sources. On request it can be supplied as FSC® Certified (FSC® C004450).



The standard seats of KOMPAN swings is engineered for maximum safety and durability. The two component seat with a PP inner core and outside rubber is produced in one operation. The seats are available with swing chains of either hot dip galvanised steel or stainless steel for all swings heights.



Swing suspensions are made of polyamide and consist of double ball bearing system with swivel.



The Robinia wood can be supplied as untreated raw wood or painted with a brown coloured transparent pigment that maintains the golden wood colour of the wood.

Item no. NRO901-1001

## Installation Information

Max. fall height	100 cm
Safety surfacing area	11.4 m <sup>2</sup>
Total installation time	2.3
Excavation volume	0.14 m <sup>3</sup>
Concrete volume	0.07 m <sup>3</sup>
Footing depth (standard)	100 cm
Shipment weight	129 kg
Anchoring options	In-ground ✓



# Sustainability Data

NRO901



Cradle to Gate A1-A3	Total CO <sub>2</sub> emission	CO <sub>2</sub> e/kg	Recycled materials
	kg CO <sub>2</sub> e	kg CO <sub>2</sub> e/kg	%
<b>NRO901-1001</b>	35.00	0.37	2.20

The overall framework applied for these factors is the Environmental Product Declaration (EPD), which quantifies "environmental information on the life cycle of a product and enable comparisons between products fulfilling the same function" (ISO, 2006). This follows the structure and applies a Life-Cycle Assessment approach to the entire Product stage from raw material through manufacturing (A1-A3))

**Kompan A/S**  
 C.F. Tietgens Boulevard 32C  
 DK-5220 Odense SØ  
 Denmark



## Verification of CO<sub>2</sub> calculation of: Nature play



Data version no. 2023-10-05

The CO<sub>2</sub> calculation and data are in compliance with the principles of a carbon footprint impact according to the GHG protocol (Greenhouse Gas Protocol), Scope 3, cradle to gate related to all individual components in the product category: "Nature play" represented by item no.: NRO409-0621.

(Scope 3 emissions include emission sources in the upstream and downstream value chain).

**Date: 30. October 2023 | Valid until: 30. October 2025**

**Verified by:**

Julie Marie Vejsgaard Larsen, LCA & EPD Consultant

Verification based on report: Validation of CO<sub>2</sub> calculation of 9 categories of Kompan product line, version 1.0, prepared by: Bureau Veritas HSE, Denmark: Julie M. V. Larsen.

**Publication date: 30. October 2023**

**By Bureau Veritas HSE**  
 www.bureauveritas.dk  
 +45 7731 1000

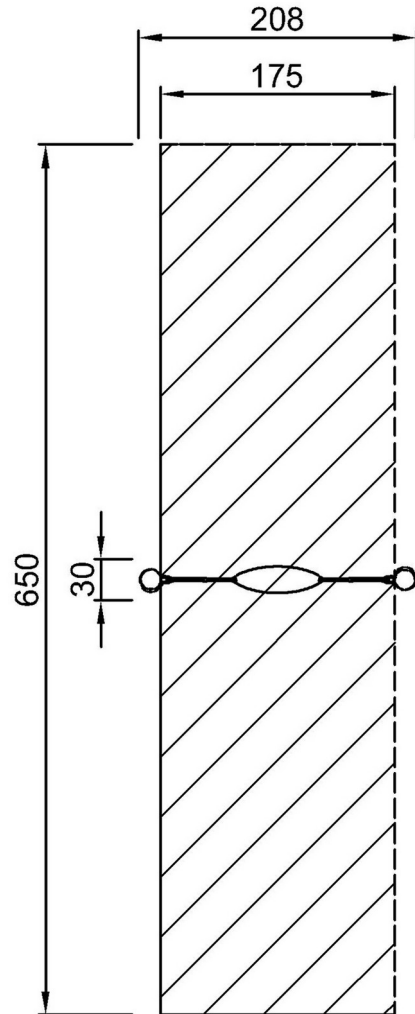


# One Seat Swing

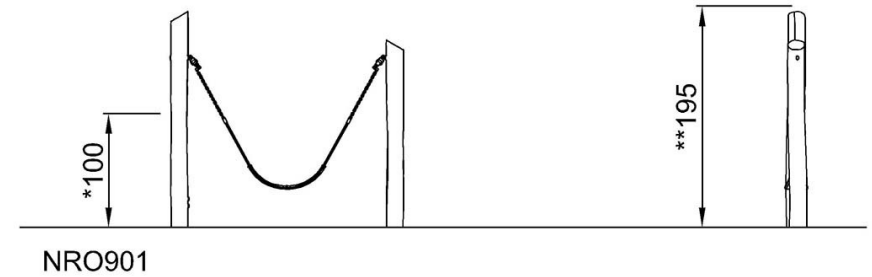
NRO901

\* Max fall height | \*\* Total height | \*\*\* Safety surfacing area

\* Max fall height | \*\* Total height



NRO901  
\* 100cm  
\*\* 195cm  
\*\*\* 11.4m<sup>2</sup>



[Click to see TOP VIEW](#)

[Click to see SIDE VIEW](#)