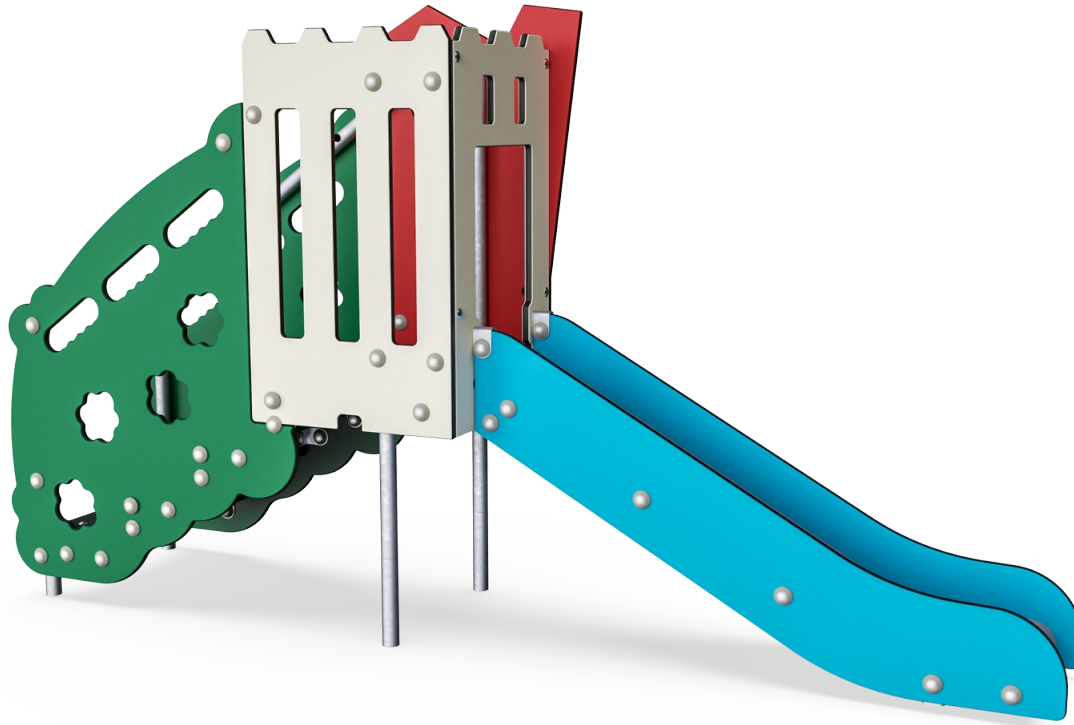


Little Treehouse Slide

MSC540202

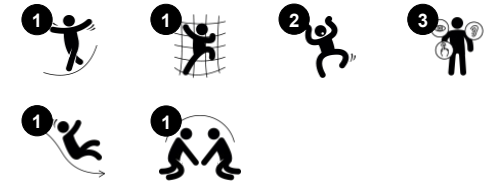
KOMPAN
Let's play



Item no. MSC540202-3417P

General Product Information

| | |
|-----------------------|---|
| Dimensions LxWxH | 8'1"x1'11"x4'8" |
| Age group | 6m - 2 |
| Play capacity (users) | 3 |
| Color options |  |



The House Slide is a nice themed slide for a toddler area. It will draw toddlers in, with its nice, supportive stair and fun slide. Sliding is hugely fun play and children try it out, again and again. Looping the stair and the slide is great cardio training. Children also train important social skills such as taking turns. When children slide, they train their core

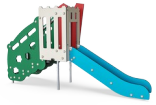
muscles, sitting upright while sliding down. This stimulates trunk stability, important for avoiding back and neck pains – a growing problem in children due to sedentary lifestyles. Sliding trains the sense of balance, fundamental for other motor skills. Climbing the ladder and learning to alternate feet, stimulates cross-coordination. This is important for mastering

movement and eventually for running. It also trains cross-modal perception, important for instance for reading skills.



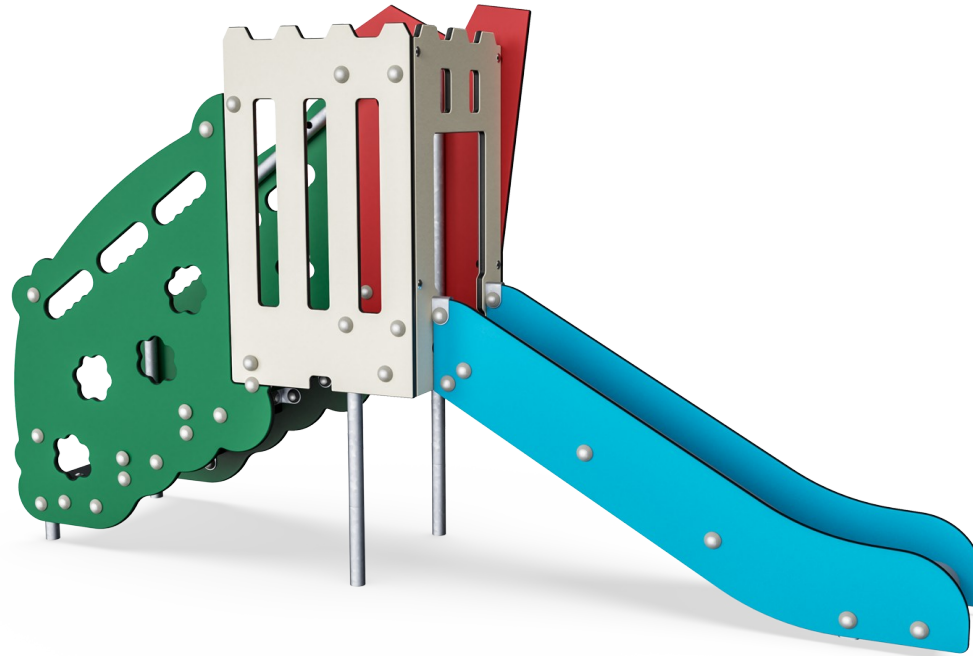
Little Treehouse Slide

MSC540202



Theme

Cognitive: suggests a theme and supports dramatic play, which stimulates language and communication skills.



Accessible stairway

Physical: climbing the accessible stairway is for all and supports cross coordination as well as arm and leg muscles. For young children, walking stairs and alternating feet is developed. **Social-Emotional:** room for active breaks and adult helpers. An inclusive space.

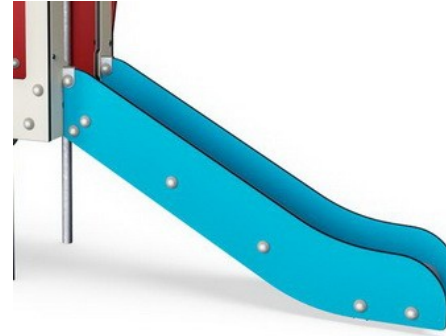
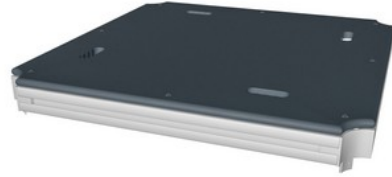
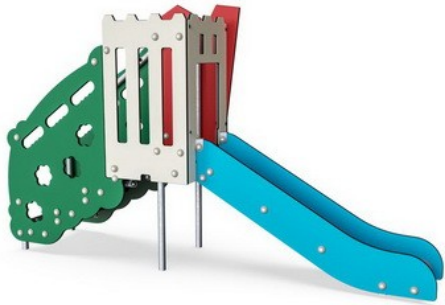


Slide

Physical: sliding develops spatial awareness and a sense of balance. Furthermore, the core muscles are trained when sitting upright going down. **Social-Emotional:** empathy stimulated by turn-taking. **Cognitive:** young children develop their understanding of space, speed and distances when sliding down quickly.

Little Treehouse Slide

MSC540202



Panels of 19mm EcoCore™. EcoCore™ is a highly durable, eco friendly material, which is not only recyclable after use, but also consists of a core produced from 100% recycled material.

All floors are made of High Pressure Laminate HPL with a thickness 17.8mm and non skid surface texture according to EN 438-6. KOMPAN HPL has high wearing strength to ensure long lifetime in all climates.

The slide is made of vacuum molded PE. PE has high impact resistance across a wide temperature span which ensures vandal resistance in all locations.



The steel surfaces are hot-dip galvanized inside and outside with lead-free zinc. The galvanization has excellent corrosion resistance in outside environments and requires minimal maintenance.

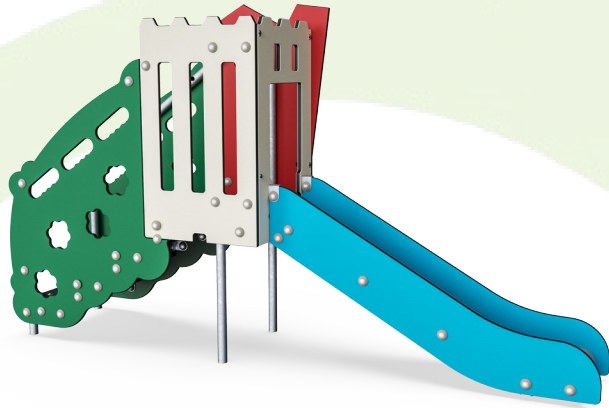
| Item no. MSC540202-3417P | |
|--------------------------|--------------------------|
| Installation Information | |
| Max. fall height | 2'0" |
| Safety surfacing area | 238ft² |
| Total installation time | 7.5 |
| Excavation volume | 0.22yd³ |
| Concrete volume | 0yd³ |
| Footing depth (standard) | 2'0" |
| Shipment weight | 321lbs |
| Anchoring options | In-ground ✓ Surface ✓ |
| Warranty Information | |
| EcoCore HDPE | Lifetime |
| Hot dip galvanized steel | Lifetime |
| HPL decks | 15 Years |
| PE/PP Components | 5 Years |
| Spare Parts Availability | 10 Years |

| Elevated activities 0 | Accessible elevated activities | Accessible ground level activities | Accessible ground level play types |
|-----------------------|--------------------------------|------------------------------------|------------------------------------|
| Present | 0 | 1 | 1 |
| Required | 0 | 1 | 1 |

**ASTM
F2373**
compliant

Sustainability Data

MSC540202



| Cradle to Gate A1-A3 | Total CO ₂ emission | CO ₂ e/kg | Recycled materials |
|------------------------|--------------------------------|-------------------------|--------------------|
| | kg CO ₂ e | kg CO ₂ e/kg | % |
| MSC540202-3417P | 198.93 | 1.92 | 58.95 |

The overall framework applied for these factors is the Environmental Product Declaration (EPD), which quantifies "environmental information on the life cycle of a product and enable comparisons between products fulfilling the same function" (ISO, 2006). This follows the structure and applies a Life-Cycle Assessment approach to the entire Product stage from raw material through manufacturing (A1-A3))

Kompan A/S
C.F. Tietgens Boulevard 32C
DK-5220 Odense SØ
Denmark



Verification of CO₂ calculation of: Themed play systems



Data version no. 2023-10-05

The CO₂ calculation and data are in compliance with the principles of a carbon footprint impact according to the GHG protocol (Greenhouse Gas Protocol), Scope 3, cradle to gate related to all individual components in the product category: "Themed play systems" represented by item no.: MSC641100-3717P.

(Scope 3 emissions include emission sources in the upstream and downstream value chain).

Date: 30. October 2023 | Valid until: 30. October 2025

Verified by:

Julie Marie Vejsgaard Larsen, LCA & EPD Consultant

Verification based on report: Validation of CO₂ calculation of 9 categories of Kompan product line, version 1.0, prepared by: Bureau Veritas HSE, Denmark: Julie M. V. Larsen.

Publication date: 30. October 2023

By Bureau Veritas HSE
www.bureauveritas.dk
+45 7731 1000

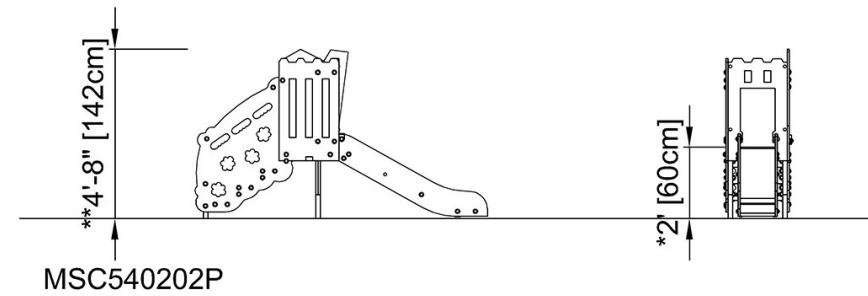
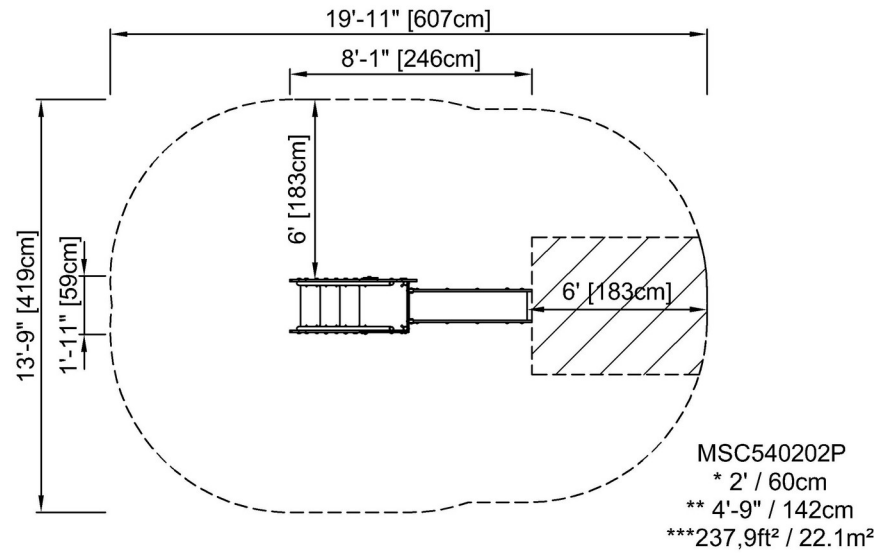


Little Treehouse Slide

MSC540202

* Max fall height | ** Total height | *** Safety surfacing area

* Max fall height | ** Total height



[Click to see TOP VIEW](#)

[Click to see SIDE VIEW](#)