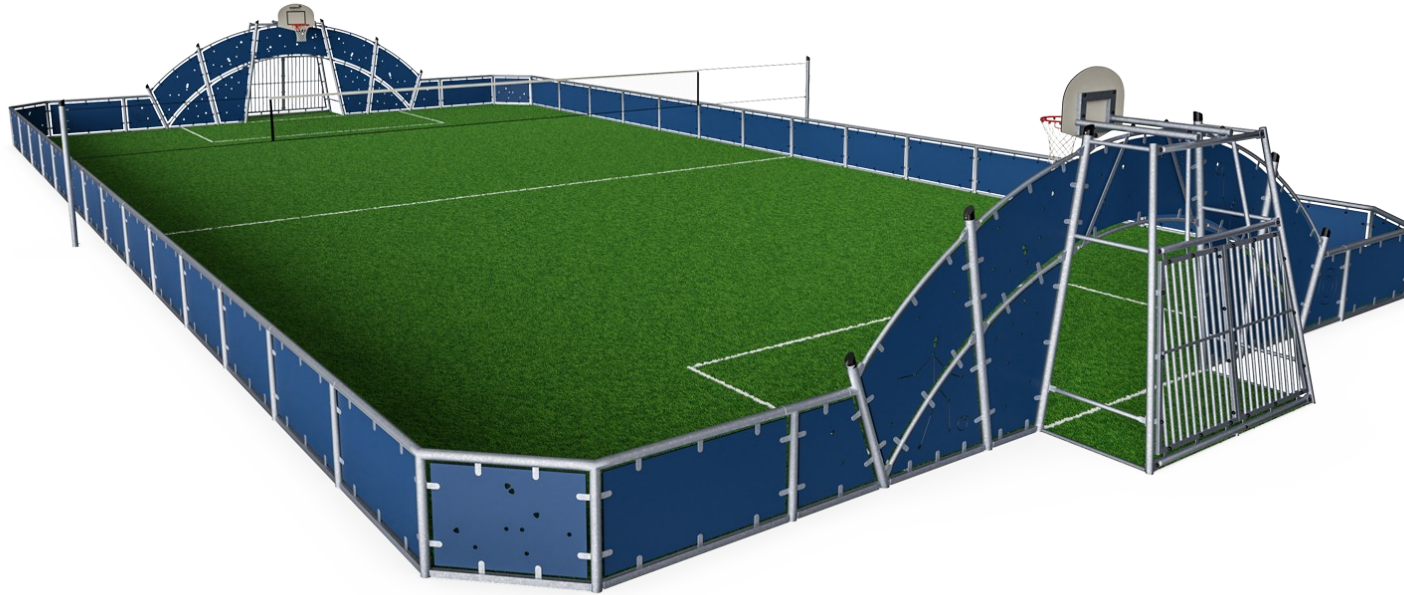


Cosmos, 16x32m

FRE2115

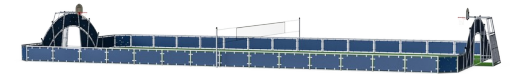
KOMPAN
Let's play



产品编号 FRE2115-3317

产品信息概览

长宽高尺寸	3262x1700x370 cm
适用年龄段	3+
容纳人数	-
颜色选择	●

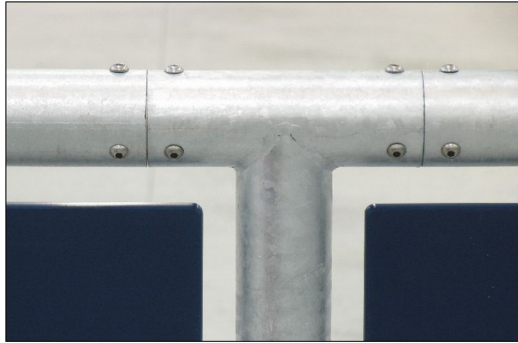


多功能运动场包括两个内置篮球架的球门和一个位于运动区中央、高度可调的多功能运动网。球门区的面板上刻有运动图案。球门上有可拆卸的防滑栏杆，方便轮椅进出，栏杆下部有较低的轮廓，用于保护带排水孔的草坪边缘。球场采用模块化系统。球场的尺寸可根据个人要求定制。高清聚乙烯板可提供不同的标准颜色。该球场还可配备一些附加活动设施。



Cosmos, 16x32m

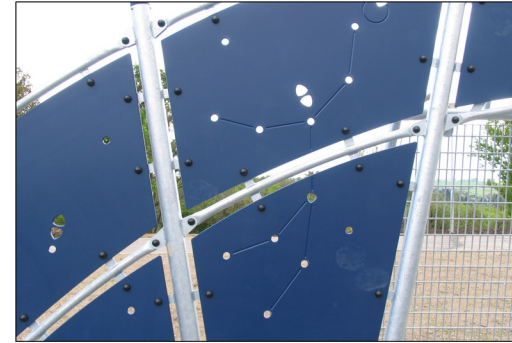
FRE2115



All steel components are manufactured from carbon steel, welding's according EN ISO 5817 & Hot dip galvanized (HDG) according to ISO1461. This process ensures good protection in all circumstances.



The goal measures ~140cm in depth and ~330cm in width with all posts made of galvanized steel with a hot dip galvanized surface treatment. The front frame is made with Ø48 tubing, and the backside of the goal uses 10 tubes with a diameter of ø38.



The HDPE panels are made with +95% recycled post-consumer material from e.g., food packing waste. Available in Night Sky Blue, but multiple colours can be requested. To increase the play value, you can also request HDPE panels with patterns or logos engraved.



Pole tops are molded of thermoplastic rubber (TPV) with a steel inlay. TPV is highly durable against wear and tear, and the steel inlay secures durability.



The basketball hoop is made from hot dipped galvanized steel with a powder coated finish and a backboard made from +95% PCR HDPE. The net is made from 100% nylon, with a circumference of ~Ø30cm at the bottom and ~Ø50cm at the top. The net can also be supplied with steel reinforced PA net or steel chains.

产品编号 FRE2115-3317

安装信息

最大跌落高度	0 cm
安全面积	0.0 m ²
安装总时长	93.9
开挖量	4.61 m ³
混凝土使用量	4.50 m ³
标准入地深度	70 cm
运输重量	4,783 kg
固定选项	入地 ✓

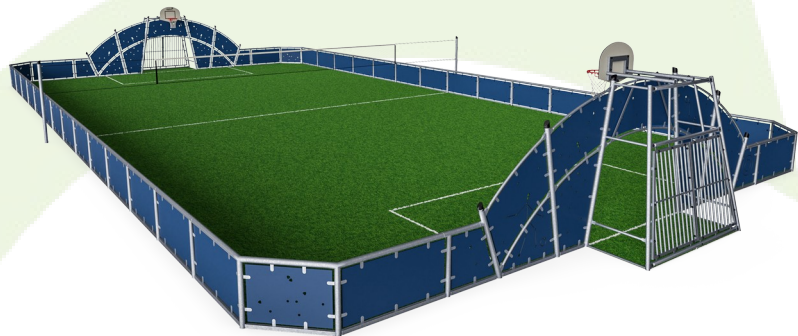
质保信息

EcoCore HDPE	终身质保
热镀锌立柱	终身质保
承保零部件	10 年



Sustainability Data

FRE2115



从原材料到成品

CO₂ 排放总量

kg CO₂e

CO₂ 排放量 / 千克

kg CO₂e/kg

回收的原料

%

FRE2115-3317

7,696.99

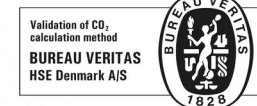
1.91

66.56

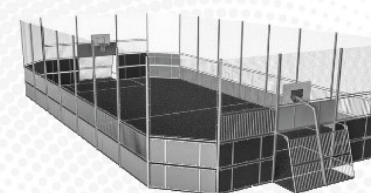
这些因素采用的总体框架为环保产品声明 (EPD), 该声明可量化“产品生命周期的环保信息, 并对相同功能的产品进行对比” (ISO, 2006)。在遵循该框架的同时, 对从原材料到制造的整个产品阶段 (A1-A3) 应用生命周期评估法。

Kompan A/S

C.F. Tietgens Boulevard 32C
DK-5220 Odense SØ
Denmark



Verification of CO₂ calculation of: Sport



Data version no. 2023-10-05

The CO₂ calculation and data are in compliance with the principles of a carbon footprint impact according to the GHG protocol (Greenhouse Gas Protocol), Scope 3, cradle to gate related to all individual components in the product category: "Sport" represented by item no.: FRE600202-0901.

(Scope 3 emissions include emission sources in the upstream and downstream value chain).

Date: 30. October 2023 | Valid until: 30. October 2025

Verified by:

Julie Marie Vejsgaard Larsen, LCA & EPD Consultant

Verification based on report: Validation of CO₂ calculation of 9 categories of Kompan product line, version 1.0, prepared by: Bureau Veritas HSE, Denmark: Julie M. V. Larsen.

Publication date: 30. October 2023

By Bureau Veritas HSE
www.bureauveritas.dk
+45 7731 1000

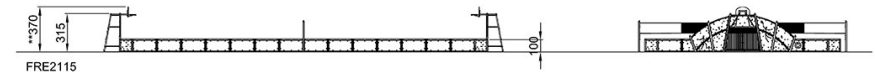
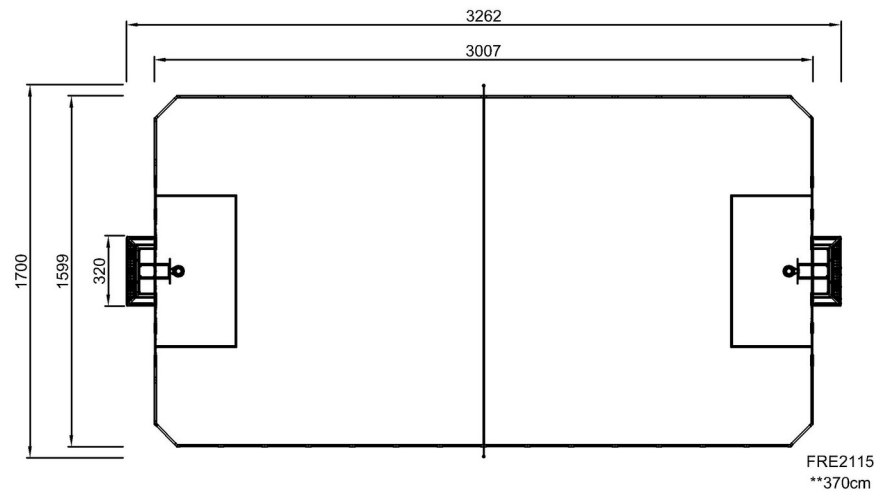


Cosmos, 16x32m

FRE2115

最大跌落高度 | 总高度 | 安全区域

最大跌落高度 | 总高度



[点击查看俯视图](#)

[点击查看侧面图](#)