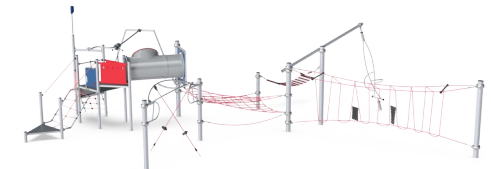
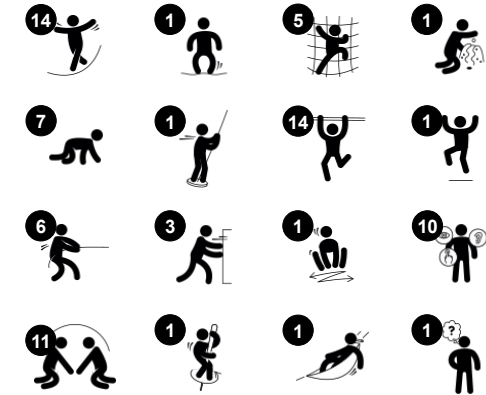


Canopy Trail

CRP251801

Item no. CRP251801-0901	
General Product Information	
Dimensions LxWxH	1064x1602x383 cm
Age group	6+
Play capacity (users)	34
Colour options	● ● ●



WOW! The Canopy Trail attracts children instantly with its varied range of glide, sway, balance, bounce and climb-and-crawl activities. The trail inspires children of all ages to play here, again and again. The transparent design makes it possible to watch each other through the structure and get inspired for new ways of playing. Agility, balance and coordination are

stimulated e.g. when children swizz through the air on the Track Ride or rocking the Overhead Rocker. This trains upper body muscles, coordination and balance in a fun, voluntary way. Due to the increase in physical inactivity and sedentary lifestyles in older children, this is hugely beneficial to children's health and well-being. Cross-coordination is trained in the

traversing nets, which develop body confidence, whilst the many horizontal nets invite socializing and being active together. This is the favourite way of older children to connect, communicate and cooperate, and make friendships for life.

Canopy Trail

CRP251801



Rope slalom

Physical: agility, balance and coordination when climbing through link, swaying on ropes. Arm, leg and core muscles are strengthened. These are important for posture control and also sitting still. **Social-Emotional:** turn-taking and consideration of others when climbing through. These skills are hard to teach but easy to learn in play.



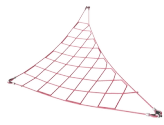
Track Ride

Physical: train arm and core muscles. Bone density when jumping down from the handholds and motor skills like agility, balance and coordination are supported. **Social-Emotional:** cooperation, consideration, turn-taking, risk-taking, self-confidence.



Musca spinner

Physical: balance when standing, sitting and rotating, muscles develop when holding tight. **Social-Emotional:** cooperation in getting the spinner to turn.



Triangular net

Social-Emotional: the net allows for more children being seated or lying together, sharing.



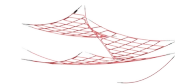
Hammock bed

Physical: swaying back and forth trains the sense of balance and spatial awareness, both important for judging distances and navigating space confidently. **Social-Emotional:** swaying, sharing and meeting with groups of friends. Turn-taking skills, when deciding who is pushing and who is swaying.



Bubble Tunnel

Physical: the children crawl through the tunnel, developing motor skills such as cross-body coordination and proprioception. **Social-Emotional:** turn-taking when passing each other. **Cognitive:** distorts the sound of the voice, developing logical thinking.



Climbing net

Physical: the net allows for climbing around, which supports motor skills, proprioception and spatial awareness. Children use muscle strength of arms, legs, and core when climbing.

Canopy Trail

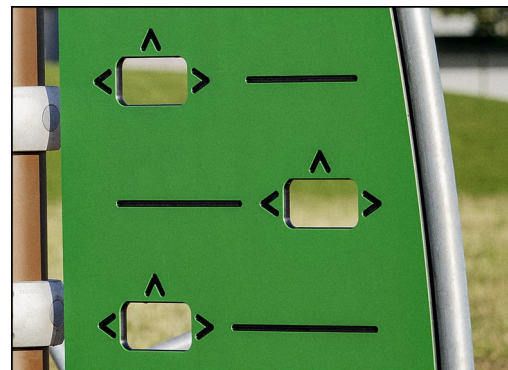
CRP251801



Ropes of UV-stabilized PES rope strands with inner steel cable reinforcement. The polyester yarn is made from +95% post-consumer materials and is inductively melted onto each strand.



Corocord 'S' clamps are used as universal connections in Corocord products. 8mm stainless steel rods with rounded edges are pressed around the ropes with a special hydraulic press, making them the ideal connector: safe, durable and vandalism-proof, all while allowing the typical movement of rope play structures.



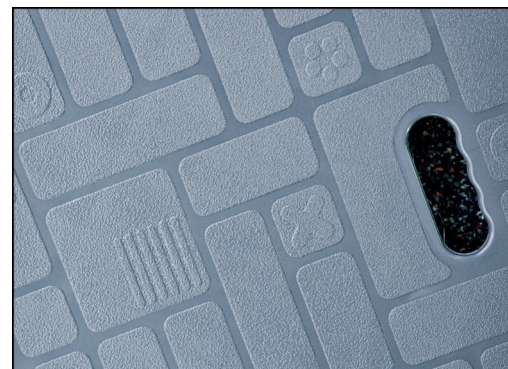
Panels of 19mm EcoCore™. EcoCore™ is a highly durable, eco friendly material, which is not only recyclable after use, but also consists of material produced from +95% recycled post consumer material from food packing waste.



Colored steel components have a base of hot dip galvanization and a powder coated top finish. This provides an ultimate corrosion resistance in all climates around the world. Other steel surfaces are hot dip galvanized inside and outside with lead free zinc.



Corocord smart clamps are carefully designed in every detail to ensure superior flexibility in high quality aluminum material. The smart clamps are attached around the posts with four steel bolts. Not used attachment points are closed with PA caps.



All decks are supported by unique designed low-carbon aluminum profiles with multiple attachment options. The grey colored molded decks are made of 75% post-consumer waste PP material with a non-skid pattern and texture surface.

Item no. CRP251801-0901

Installation Information

Max. fall height	214 cm
Safety surfacing area	143.3 m ²
Total installation time	41.0
Excavation volume	18.71 m ³
Concrete volume	10.41 m ³
Footing depth (standard)	90 cm
Shipment weight	1,831 kg
Anchoring options	Surface ✓ In-ground ✓

Warranty Information

Aluminium clamps	10 years
Hot dip galvanised steel	Lifetime
Painted toplayer	10 years
Ropes & nets	10 years
Spare parts guaranteed	10 years



Sustainability Data

CRP251801



Cradle to Gate A1-A3	Total CO ₂ emission	CO ₂ e/kg	Recycled materials
	kg CO ₂ e	kg CO ₂ e/kg	%
CRP251801-0901	4,038.22	3.01	47.95

The overall framework applied for these factors is the Environmental Product Declaration (EPD), which quantifies "environmental information on the life cycle of a product and enable comparisons between products fulfilling the same function" (ISO, 2006). This follows the structure and applies a Life-Cycle Assessment approach to the entire Product stage from raw material through manufacturing (A1-A3))

Kompan A/S
 C.F. Tietgens Boulevard 32C
 DK-5220 Odense SØ
 Denmark



Verification of CO₂ calculation of: Corocord



Data version no. 2023-10-05

The CO₂ calculation and data are in compliance with the principles of a carbon footprint impact according to the GHG protocol (Greenhouse Gas Protocol), Scope 3, cradle to gate related to all individual components in the product category: "Corocord" represented by item no.: COR314011-1101.

(Scope 3 emissions include emission sources in the upstream and downstream value chain).

Date: 30. October 2023 | Valid until: 30. October 2025

Verified by:

Julie Marie Vejsgaard Larsen, LCA & EPD Consultant

Verification based on report: Validation of CO₂ calculation of 9 categories of Kompan product line, version 1.0, prepared by: Bureau Veritas HSE, Denmark: Julie M. V. Larsen.

Publication date: 30. October 2023

By Bureau Veritas HSE
 www.bureauveritas.dk
 +45 7731 1000

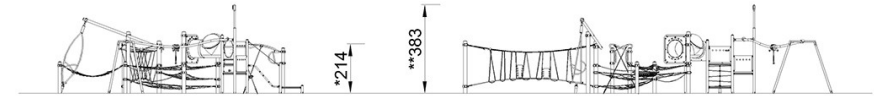
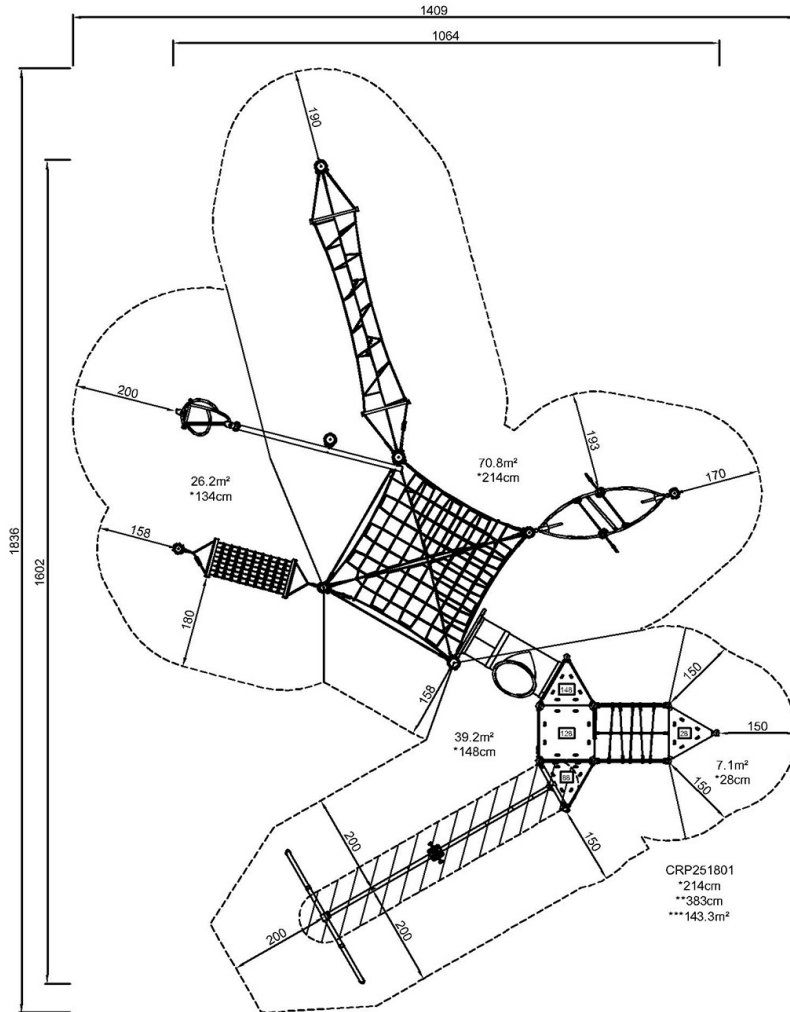


Canopy Trail

CRP251801

* Max fall height | ** Total height | *** Safety surfacing area

* Max fall height | ** Total height



CRP251801

[Click to see TOP VIEW](#)

[Click to see SIDE VIEW](#)