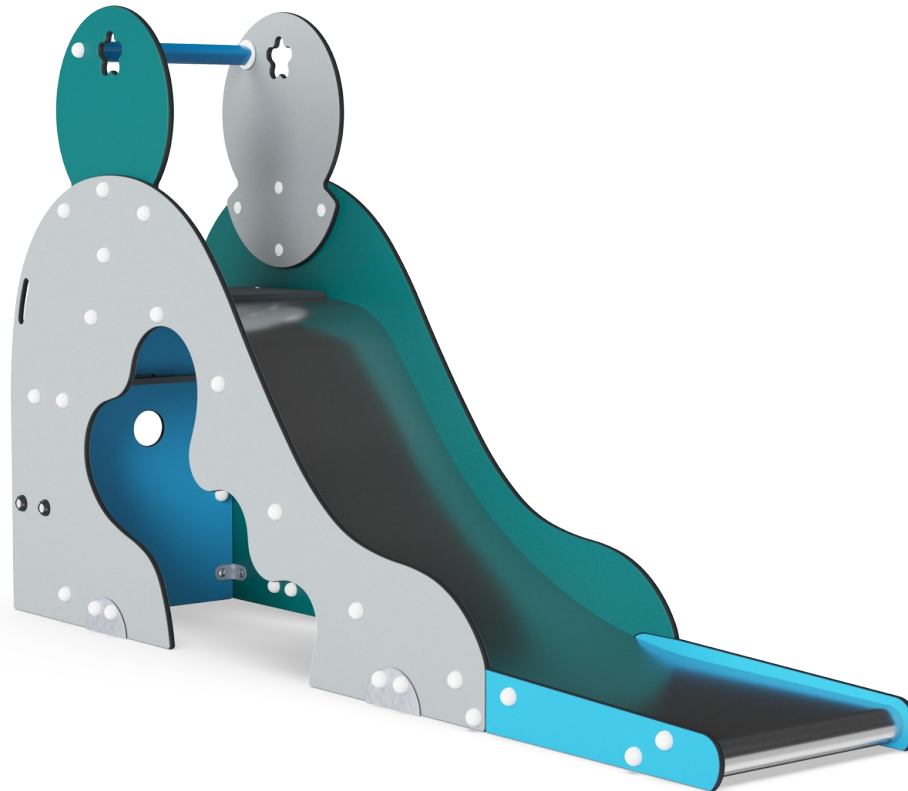


Aladdin's Cave


M326

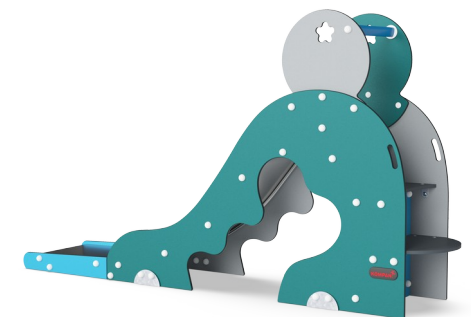
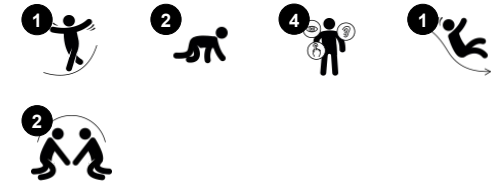


Aladdin's Cave is a KOMPAN original. With its whimsical, classic KOMPAN shapes and vivid colours, it has attracted and amused children for generations. It is a true playground hit: the ergonomically shaped stair leads securely, with good handgrips, to the wide steel slide. The slide sides offer additional grip support. This is good, as the inclination of the Aladdin's Cave

slide is designed for thrilling rides: steep first, so the slide gains speed in the beginning. Shallow and long at the end, so that the ride ends securely and safely. This is the recipe for true success in sliding: fun within a secure framework. Sliding also trains the child's body stability and the senses of balance and space, which are important skills for body mastery

and, for instance, sitting still on a chair. Under the slide a nice room for socializing allows children to make friends for life.

Item no. M32671-3418P	
General Product Information	
Dimensions LxWxH	60x293x165 cm
Age group	2+
Play capacity (users)	2
Colour options	



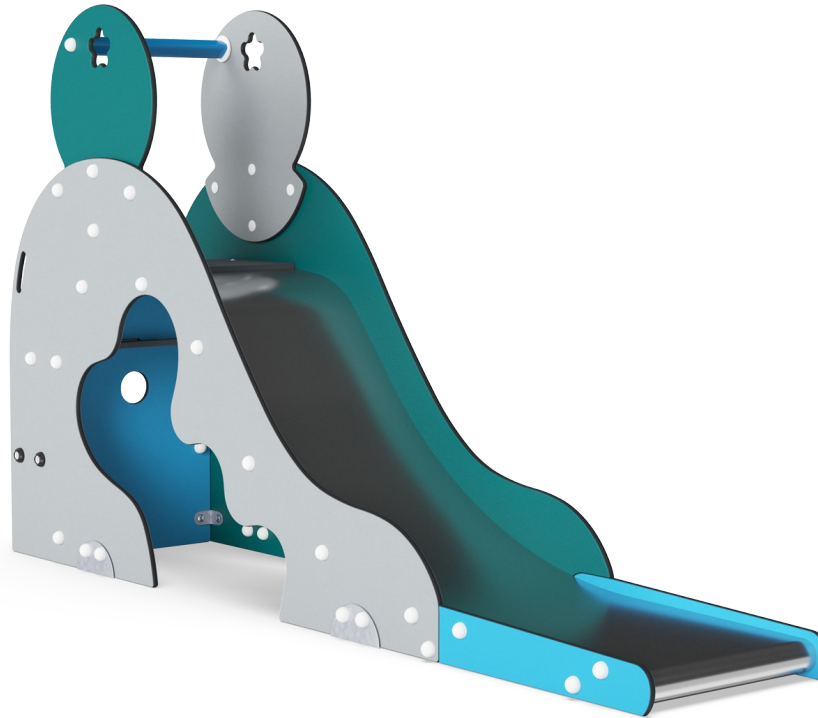
Aladdin's Cave

M326



Slide

Physical: sliding develops spatial awareness and a sense of balance. Furthermore, the core muscles are trained when sitting upright going down. **Social-Emotional:** empathy stimulated by turn-taking. **Cognitive:** young children develop their understanding of space, speed and distances when sliding down quickly.



Stair ladder

Physical: cross coordination is used, supporting the cooperation of the left and right halves of the brain, which is necessary for reading. For young children, spatial awareness is trained when walking stairs.



Den

Physical: crawling through the possible openings trains spatial awareness. **Social-Emotional:** the enclosed space invites social play for two or three children.

Aladdin's Cave

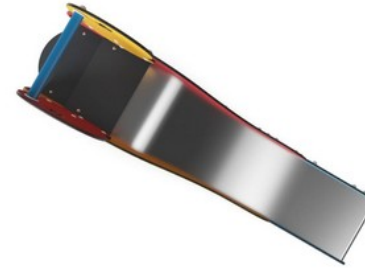
M326



Panels of 19mm EcoCore™. EcoCore™ is a highly durable, eco friendly material, which is not only recyclable after use, but also consists of material produced from +95% recycled post consumer material from food packing waste.



The steps are made of High Pressure Laminate HPL with a thickness 17,8mm and non skid surface texture according to EN 438-6. KOMPAN HPL has high wearing strength to ensure long lifetime in all climates.

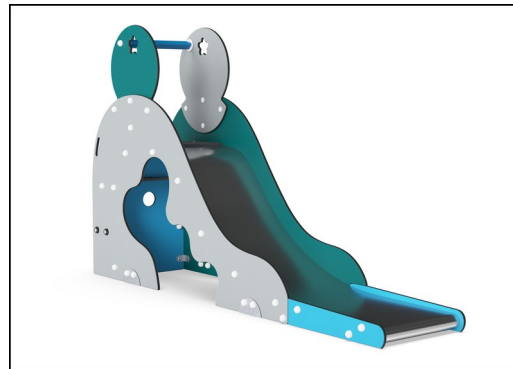


The stainless-steel slides with one-piece slide bed are made of high-quality stainless-steel AISI 304.

Item no. M32671-3418P	
Installation Information	
Max. fall height	100 cm
Safety surfacing area	15.8 m ²
Total installation time	4.4
Excavation volume	0.45 m ³
Concrete volume	0.00 m ³
Footing depth (standard)	63 cm
Shipment weight	206 kg
Anchoring options	In-ground ✓ Surface ✓
Warranty Information	
EcoCore HDPE	Lifetime
HPL decks	15 years
Spare parts guaranteed	10 years
Stainless steel slide	10 years



Handle is made of polypropylene PP with excellent impact strength and usable within a large temperature span.

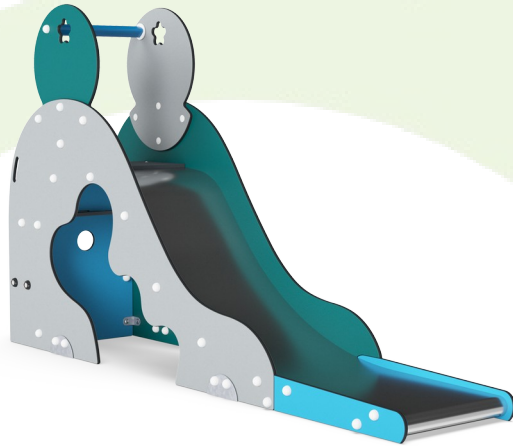


KOMPAN GreenLine versions are designed with ultimate environmentally friendly materials with lowest possible CO₂e emission factor such as EcoCore™ panels of +95% post consumer recycled ocean waste.



Sustainability Data

M326



Cradle to Gate A1-A3	Total CO ₂ emission	CO ₂ e/kg	Recycled materials
	kg CO ₂ e	kg CO ₂ e/kg	%
M32671-3418P	264.31	1.96	68.71

The overall framework applied for these factors is the Environmental Product Declaration (EPD), which quantifies "environmental information on the life cycle of a product and enable comparisons between products fulfilling the same function" (ISO, 2006). This follows the structure and applies a Life-Cycle Assessment approach to the entire Product stage from raw material through manufacturing (A1-A3))

Kompan A/S
 C.F. Tietgens Boulevard 32C
 DK-5220 Odense SØ
 Denmark



Verification of CO₂ calculation of: Freestanding play equipment



Data version no. 2023-10-05

The CO₂ calculation and data are in compliance with the principles of a carbon footprint impact according to the GHG protocol (Greenhouse Gas Protocol), Scope 3, cradle to gate related to all individual components in the product category: "Freestanding play equipment" represented by item no.: GXY916012-3417.

(Scope 3 emissions include emission sources in the upstream and downstream value chain).

Date: 30. October 2023 | Valid until: 30. October 2025

Verified by:

Julie Marie Vejsgaard Larsen, LCA & EPD Consultant

Verification based on report: Validation of CO₂ calculation of 9 categories of Kompan product line, version 1.0, prepared by: Bureau Veritas HSE, Denmark: Julie M. V. Larsen.

Publication date: 30. October 2023

By Bureau Veritas HSE
 www.bureauveritas.dk
 +45 7731 1000

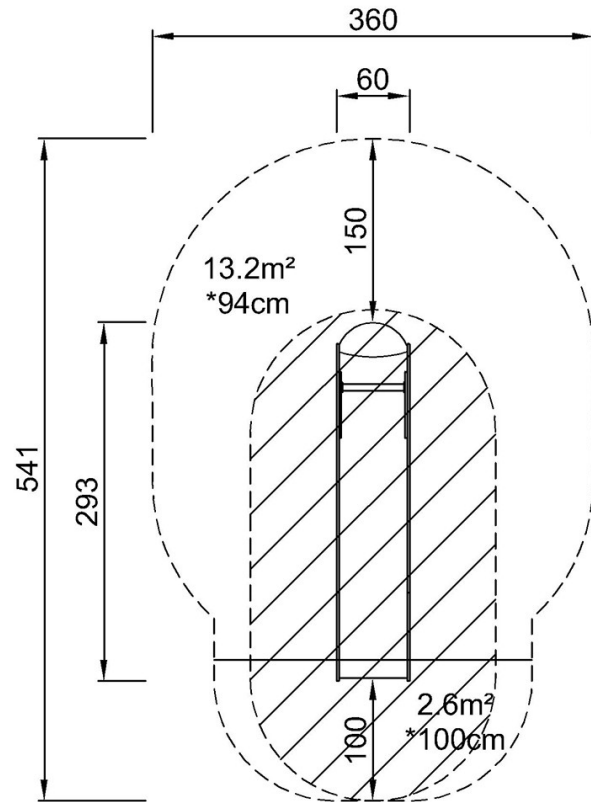


Aladdin's Cave

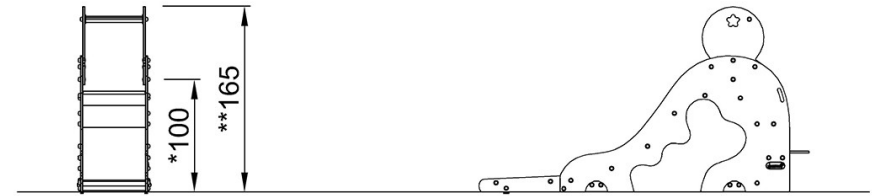
M326

* Max fall height | ** Total height | *** Safety surfacing area

* Max fall height | ** Total height



M32671
*100cm
**165cm
***15.8m²



M32671

[Click to see TOP VIEW](#)

[Click to see SIDE VIEW](#)