
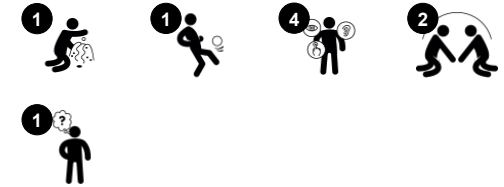


Magnetic White Board

PCM0013



Item no. PCM001308-0902	
General Product Information	
Dimensions LxWxH	5'5"x0'5"x4'7"
Age group	2 - 12
Play capacity (users)	4
Color options	



This large magnetic white board will support hours of play and learning in an outdoor learning environment or playground. The large space is plenty for many children to join in, which will help them to develop fine motor skills when drawing, and language and literacy skills when making signs. The large size supports social play, because there is plenty of room for

interaction and cooperation. White boards can have direct benefits for learning, and they also enhance a variety of dramatic play scenarios, from playing school to making a sign for treasure hunting games. There are cognitive benefits to drawing and leaving your mark, because it stimulates brain development. The magnetic feature can also spark conversations

about the magnetic properties of objects. All around fun for curious minds!



Magnetic White Board

PCM0013



Labyrinth panel

Social-Emotional: communication and cooperation exploring the maze with friends.
Cognitive: stimulates memory when memorizing maze routes.

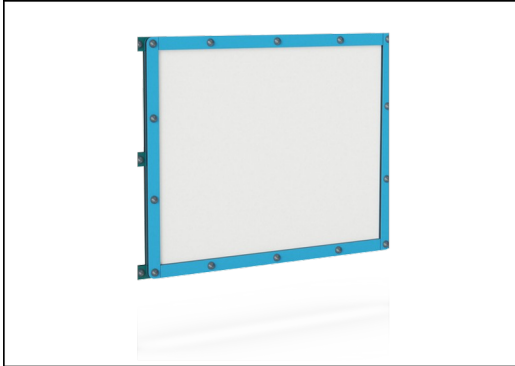


Whiteboard

Social-Emotional: the width of the blackboard caters to groups of children cooperating and sharing ideas. **Creative:** drawing and leaving your mark stimulates creative thinking.

Magnetic White Board

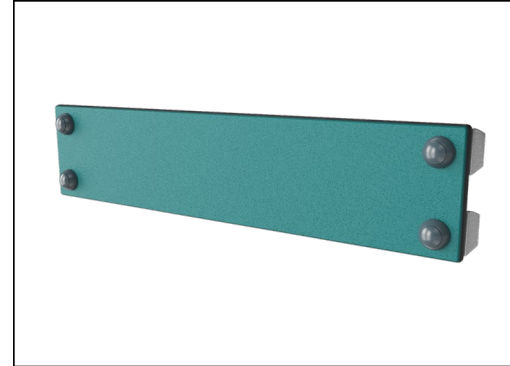
PCM0013



Board is made of ceramic steel. Ceramic steel has high corrosion resistance and it is completely recyclable.

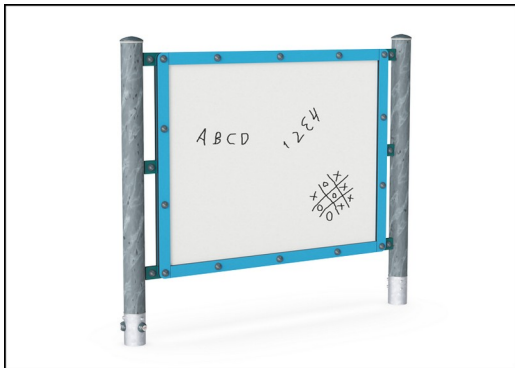


Posts are made of pine wood posts pressure impregnated class AB with Tanalith E3475 according to EN335.



Panels of 19mm EcoCore™. EcoCore™ is a highly durable, eco friendly material, which is not only recyclable after use, but also consists of a core produced from 100% recycled material.

Item no. PCM001308-0902	
Installation Information	
Max. fall height	0'0"
Safety surfacing area	0ft ²
Total installation time	3.8
Excavation volume	0.07yd ³
Concrete volume	0yd ³
Footing depth (standard)	2'9"
Shipment weight	177lbs
Anchoring options	Surface <input checked="" type="checkbox"/> In-ground <input checked="" type="checkbox"/>
Warranty Information	
EcoCore HDPE	Lifetime
Post	10 Years
Spare Parts Availability	10 Years



KOMPAN GreenLine versions are designed with the most environmentally friendly materials with the lowest possible CO₂e emission factor such as EcoCore™ panels of 100% post-consumer recycled ocean waste.

Elevated activities 0	Accessible elevated activities	Accessible ground level activities	Accessible ground level play types
Present	0	1	1
Required	0	1	1

**ASTM
F1487**
compliant

Sustainability Data

PCM0013



Cradle to Gate A1-A3	Total CO ₂ emission	CO ₂ e/kg	Recycled materials
	kg CO ₂ e	kg CO ₂ e/kg	%
PCM001308-0950	80.08	1.16	82.96
PCM001308-0902	95.25	1.56	76.62

The overall framework applied for these factors is the Environmental Product Declaration (EPD), which quantifies "environmental information on the life cycle of a product and enable comparisons between products fulfilling the same function" (ISO, 2006). This follows the structure and applies a Life-Cycle Assessment approach to the entire Product stage from raw material through manufacturing (A1-A3))

Kompan A/S
C.F. Tietgens Boulevard 32C
DK-5220 Odense SØ
Denmark



Verification of CO₂ calculation of: Themed play systems



Data version no. 2023-10-05

The CO₂ calculation and data are in compliance with the principles of a carbon footprint impact according to the GHG protocol (Greenhouse Gas Protocol), Scope 3, cradle to gate related to all individual components in the product category: "Themed play systems" represented by item no.: MSC641100-3717P.

(Scope 3 emissions include emission sources in the upstream and downstream value chain).

Date: 30. October 2023 | Valid until: 30. October 2025

Verified by:

Julie Marie Vejsgaard Larsen, LCA & EPD Consultant

Verification based on report: Validation of CO₂ calculation of 9 categories of Kompan product line, version 1.0, prepared by: Bureau Veritas HSE, Denmark: Julie M. V. Larsen.

Publication date: 30. October 2023

By Bureau Veritas HSE
www.bureauveritas.dk
+45 7731 1000

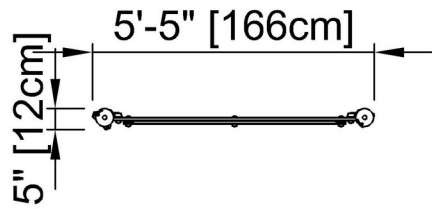


Magnetic White Board

PCM0013

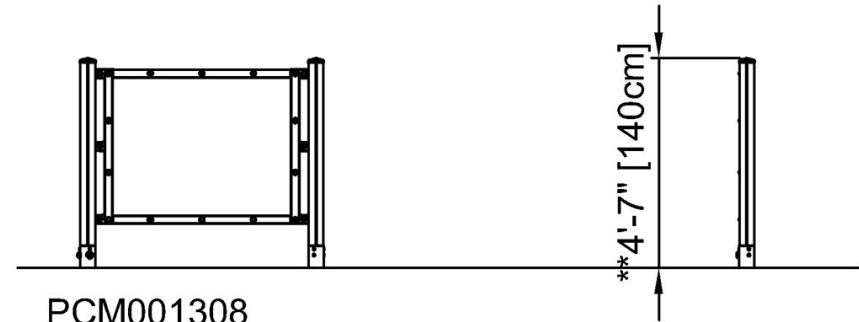
* Max fall height | ** Total height | *** Safety surfacing area

* Max fall height | ** Total height



PCM001308

** 4'-8" / 140cm



PCM001308
1:100

[Click to see TOP VIEW](#)

[Click to see SIDE VIEW](#)