

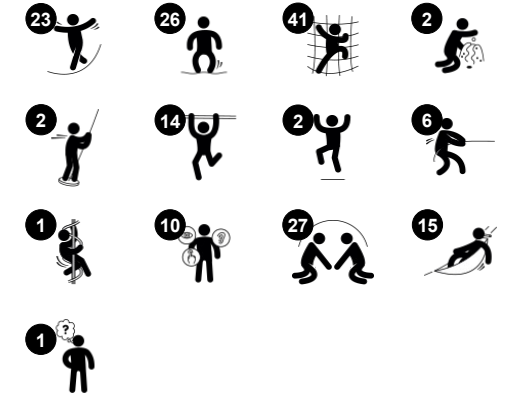
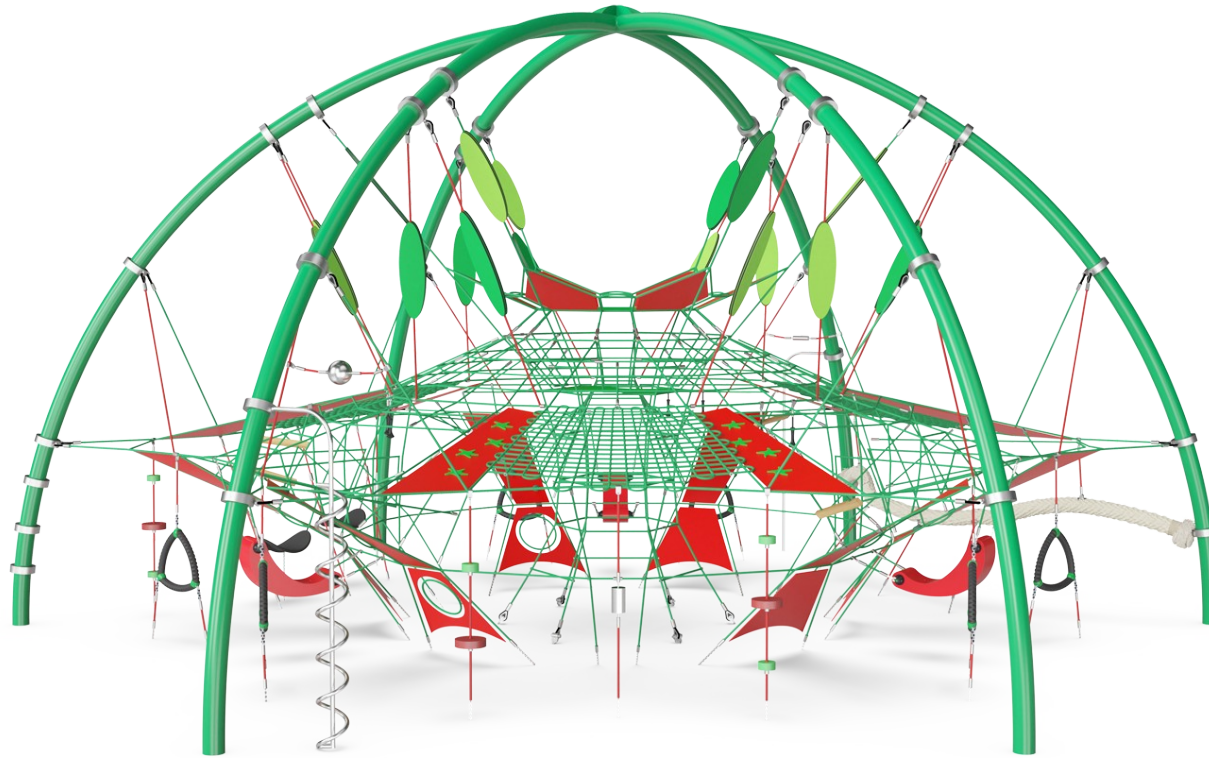
# Giant Dome

COR86700

Item no. COR867001-0403

### General Product Information

Dimensions LxWxH	39'11"x35'0"x20'4"
Age group	5 - 12
Play capacity (users)	160
Color options	



WOW! The GIANT Dome attracts children immediately. A wide variety of play activities including climbing, gliding, bouncing, swaying play keeps children playing. When climbing across the GIANT Dome to the top, children develop important social-emotional skills such as empathy, cooperation, and self-regulation. The feeling of achievement in reaching the top

up high makes the meetings there sweet. Children develop strength and cross-coordination on the climbing journey. These are crucial physical skills. Apart from the rich physical play, active social play is encouraged in horizontal nets and membranes. On ground level, a choice of climb-over, through and up activities invite play. Swaying horizontal and

vertical ropes, triangles and play shells accommodate active, fun retraction and meeting points for all to meet and make friends in play.

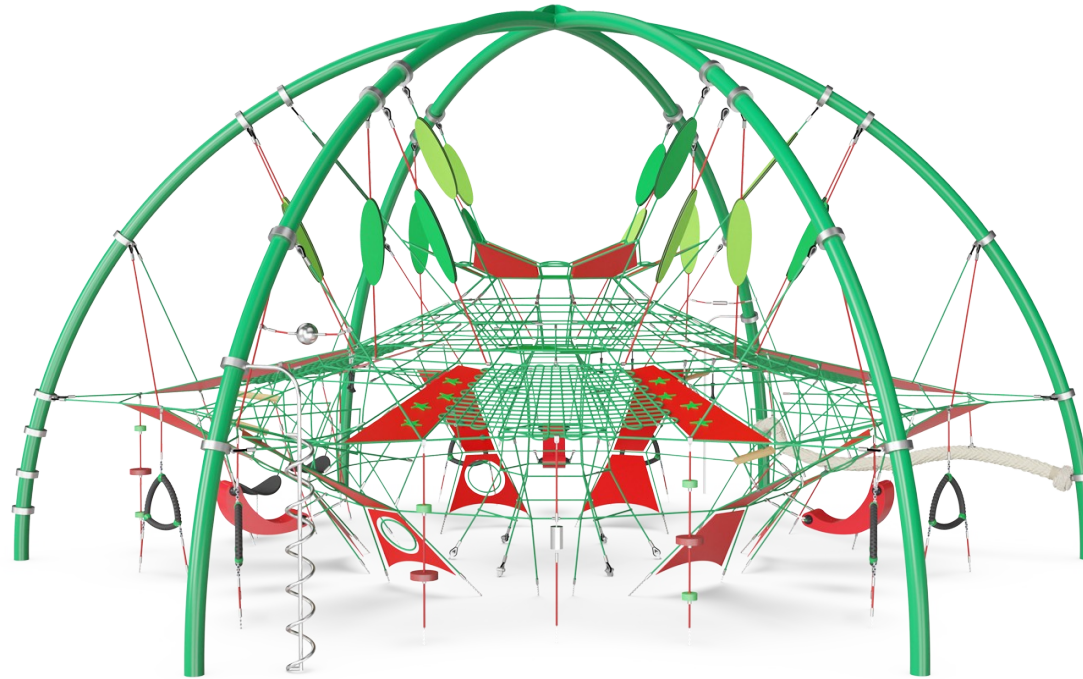
# Giant Dome

COR86700



## Giant dome net

**Physical:** the connected nets make the climbers feel the movements of the others, adding a dimension of fun and demanding concentration when holding tight to the rope. Cross-coordination and all muscle groups are trained. **Social-Emotional:** the climbers' movements affect the other climbers. Room for breaks for many and support cooperation and turn-taking skills. The transparent design enables communication and orientation across the unit.



## Various membranes

**Physical:** the bouncy membranes develop the sense of balance when the child stands, steps or sits there. Cross coordination and proprioception when crawling through. **Social-Emotional:** great point for a break or meeting with friends. Showing consideration of others and helping others when passing one another going up or down the membranes.



## Coconut rope

**Physical:** balance and coordination is supported when walking the swaying rope. A good sense of balance transfers to other skills such as sitting still on a chair. Bone density is developed when jumping off. **Social-Emotional:** children swaying together on the rope experience their own and others' movements. This spurs cooperation and consideration, e.g. when passing others on the rope.



## Play shell

**Physical:** the swaying movement stimulates the sense of balance, necessary to sit still on a chair. **Social-Emotional:** meeting, taking a break and turn-taking are supported, skills necessary to learn how to avoid conflicts.



## Ropes with rubber discs

**Physical:** children develop cross-body coordination and muscle strength when stepping onto the disc and climbing the rope. Their sense of balance is trained when swaying gently. The sense of balance is important for instance for being able to sit still. **Social-Emotional:** socializing and turn-taking when deciding who should sit here.



## Curly climber

**Physical:** coordination and proprioception are supported when placing arms and legs correctly for going down. Sense of balance when rotating. Arm muscles for holding tight. **Social-Emotional:** empathy stimulated by turn-taking. **Cognitive:** logical thinking when placing arms and legs right for rotating downward.



## Hammock

**Physical:** coordination and sense of balance when swaying. **Social-Emotional:** meeting, pushing friends gently back and forth, turn-taking.

# Giant Dome

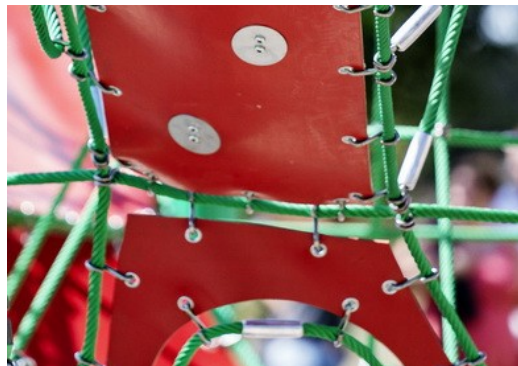
COR86700



The metal parts are made of high quality steel, hot dip galvanized inside and outside with lead-free zinc. On the outside, there is an additional layer of powder coating. This ensures both excellent corrosion resistance and colorful design expression.



Corocord 'S' clamps are used as universal connections in Corocord products. 8mm stainless steel rods with rounded edges are pressed around the ropes with a special hydraulic press, making them the ideal connector: safe, durable and vandalism-proof, all while allowing the typical movement of rope play structures.



Corocord membranes consist of friction-proof rubberized material of conveyor belt quality with excellent UV resistance. Tested and compliant with REACH requirements for PAH. Embedded is a four-layered armoring made of woven polyester. The armoring and the two surface layers result in a total thickness of 7.5 mm.



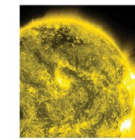
Corocord ropes with 19mm diameter or more are special 'Hercules' - type with galvanized six-stranded steel wires. Each strand is tightly wrapped with PES yarn, which is melted onto each individual strand. The ropes are highly wear- and vandalism-resistant and can be replaced at site if needed.



LUNA



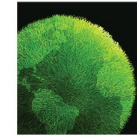
MARS



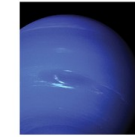
SOLARIS



VENUS



TERRA



NEPTUNE

The COROCORD Frame Nets are available in 6 galactic color themes. The themes draw on bright colors that appeal to children of all ages. Can be changed in the configurator.



As an option, sunshading can be integrated into the Giant Dome. The lightweight, durable and semitransparent tissue perfectly complements the colorful design, while blocking up to 79% of solar radiation and protecting the children.

Item no. COR867001-0403	
Installation Information	
Max. fall height	8'6"
Safety surfacing area	1647ft <sup>2</sup>
Total installation time	97.2
Excavation volume	18.23yd <sup>3</sup>
Concrete volume	8.79yd <sup>3</sup>
Footing depth (standard)	2'11"
Shipment weight	8374lbs
Anchoring options	In-ground ✓
Warranty Information	
Corocord Rope	10 Years
Membrane	2 Years
Painted toplayer	10 Years
S-Clamps	10 Years
Spare Parts Availability	10 Years

Elevated activities	Accessible elevated activities	Accessible ground level activities	Accessible ground level play types
Present	0	1	1
Required	0	1	1

**ASTM F1487**  
compliant

# Sustainability Data

COR86700



Cradle to Gate A1-A3	Total CO <sub>2</sub> emission	CO <sub>2</sub> e/kg	Recycled materials
	kg CO <sub>2</sub> e	kg CO <sub>2</sub> e/kg	%
<b>COR867001-0403</b>	11,685.10	3.11	46.22

The overall framework applied for these factors is the Environmental Product Declaration (EPD), which quantifies "environmental information on the life cycle of a product and enable comparisons between products fulfilling the same function" (ISO, 2006). This follows the structure and applies a Life-Cycle Assessment approach to the entire Product stage from raw material through manufacturing (A1-A3))

**Kompan A/S**  
C.F. Tietgens Boulevard 32C  
DK-5220 Odense SØ  
Denmark



## Verification of CO<sub>2</sub> calculation of: Corocord



Data version no. 2023-10-05

The CO<sub>2</sub> calculation and data are in compliance with the principles of a carbon footprint impact according to the GHG protocol (Greenhouse Gas Protocol), Scope 3, cradle to gate related to all individual components in the product category: "Corocord" represented by item no.: COR314011-1101.

(Scope 3 emissions include emission sources in the upstream and downstream value chain).

**Date: 30. October 2023 | Valid until: 30. October 2025**

Verified by:

Julie Marie Vejsgaard Larsen, LCA & EPD Consultant

Verification based on report: Validation of CO<sub>2</sub> calculation of 9 categories of Kompan product line, version 1.0, prepared by: Bureau Veritas HSE, Denmark: Julie M. V. Larsen.

**Publication date: 30. October 2023**

By Bureau Veritas HSE  
www.bureauveritas.dk  
+45 7731 1000

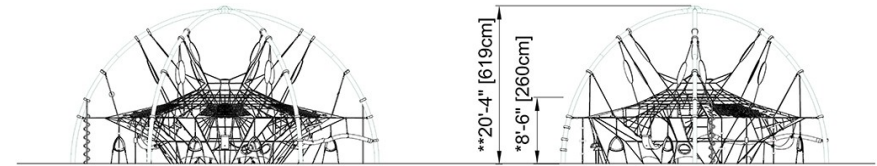
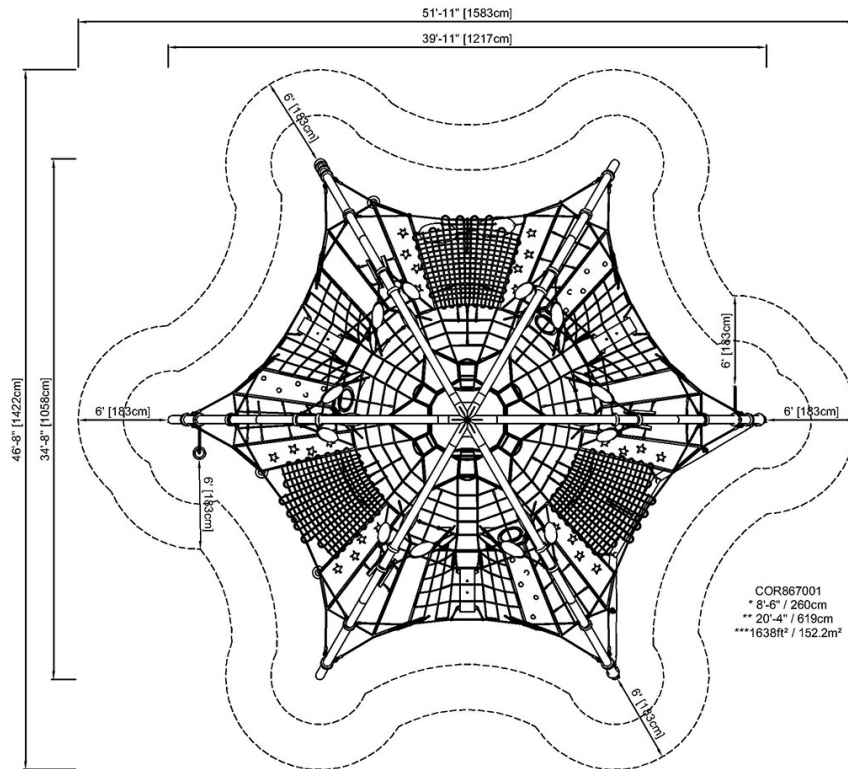


# Giant Dome

COR86700

\* Max fall height | \*\* Total height | \*\*\* Safety surfacing area

\* Max fall height | \*\* Total height



COR867001

[Click to see TOP VIEW](#)

[Click to see SIDE VIEW](#)