
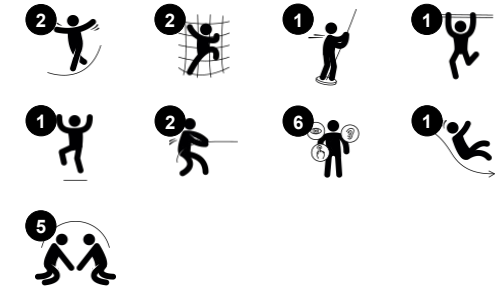


Double Tower with Spider Net

NRO2003



Item no. NRO2003-1021	
General Product Information	
Dimensions LxWxH	648x652x308 cm
Age group	4+
Play capacity (users)	15
Color options	



The Double Tower with Spider net has lots of climb, slide and glide variations, children will want to try it out again and again. They will train their muscles balance and cross-coordination as they loop the varied play activities. The spider net has partly inclined horizontal rungs, which adds challenge to the climb. It trains the child's cross-coordination,

which again trains cross-modal perception, necessary for reading. The sturdy balance bridge trains the sense of balance, the fundamental motor skill that make children confident when moving and is important for the ability to sit still and concentrate. Apart from being great fun, the slide and glide accesses both train spatial awareness, which again is

important to judging distances. The Double Tower with Spider Net with its play variation stimulates turn-taking, cooperation and consideration in play.



Double Tower with Spider Net

NRO2003



All Organic Robinia products by KOMPAN are made of Robinia wood from sustainable European sources. On request it can be supplied as FSC® Certified (FSC® C004450).



The paint used for coloured components is water based environmentally friendly with excellent UV resistance. The paint is in compliance with EN 71 Part 3.



The stainless-steel slides with one-piece slide bed are made of high-quality stainless-steel AISI 304.

Item no. NRO2003-1021

Installation Information

Max. fall height	207 cm
Safety surfacing area	59.5 m ²
Total installation time	22.5
Excavation volume	1.84 m ³
Concrete volume	0.25 m ³
Footing depth (standard)	100 cm
Shipment weight	1,170 kg
Anchoring options	In-ground ✓



Ropes of UV-stabilized PES rope strands with inner steel cable reinforcement. The polyester yarn is made from +95% post-consumer materials and is inductively melted onto each strand.



The hardware is made of stainless steel or galvanised steel to ensure durable connections with a high corrosion resistance.



The Robinia products are designed with a KOMPAN colour concept with a number of different standard colours. The wood can also be supplied as untreated or with brown painted with a pigment that maintains the wood colour.



Sustainability Data

NRO2003



Cradle to Gate A1-A3	Total CO ₂ emission	CO ₂ e/kg	Recycled materials
	kg CO ₂ e	kg CO ₂ e/kg	%
NRO2003-1021	794.60	0.91	9.20

The overall framework applied for these factors is the Environmental Product Declaration (EPD), which quantifies "environmental information on the life cycle of a product and enable comparisons between products fulfilling the same function" (ISO, 2006). This follows the structure and applies a Life-Cycle Assessment approach to the entire Product stage from raw material through manufacturing (A1-A3))

Kompan A/S
 C.F. Tietgens Boulevard 32C
 DK-5220 Odense SØ
 Denmark



Verification of CO₂ calculation of: Nature play



Data version no. 2023-10-05

The CO₂ calculation and data are in compliance with the principles of a carbon footprint impact according to the GHG protocol (Greenhouse Gas Protocol), Scope 3, cradle to gate related to all individual components in the product category: "Nature play" represented by item no.: NRO409-0621.

(Scope 3 emissions include emission sources in the upstream and downstream value chain).

Date: 30. October 2023 | Valid until: 30. October 2025

Verified by:

Julie Marie Vejsgaard Larsen, LCA & EPD Consultant

Verification based on report: Validation of CO₂ calculation of 9 categories of Kompan product line, version 1.0, prepared by: Bureau Veritas HSE, Denmark: Julie M. V. Larsen.

Publication date: 30. October 2023

By Bureau Veritas HSE
 www.bureauveritas.dk
 +45 7731 1000

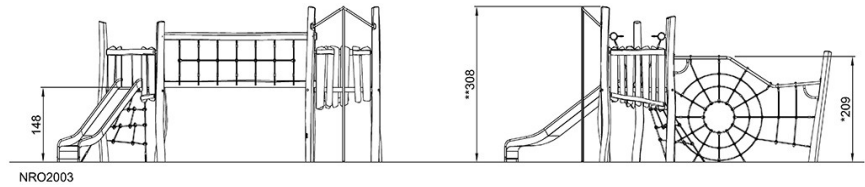
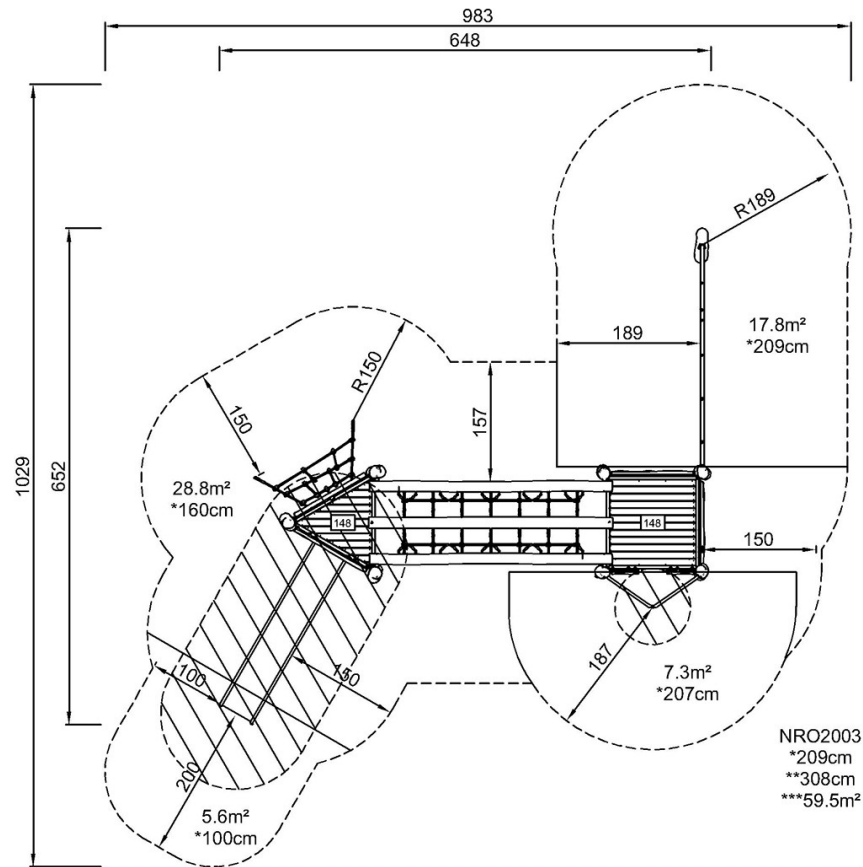


Double Tower with Spider Net

NRO2003

* Max fall height | ** Total height | *** Safety surfacing area

* Max fall height | ** Total height



[Click to see TOP VIEW](#)

[Click to see SIDE VIEW](#)