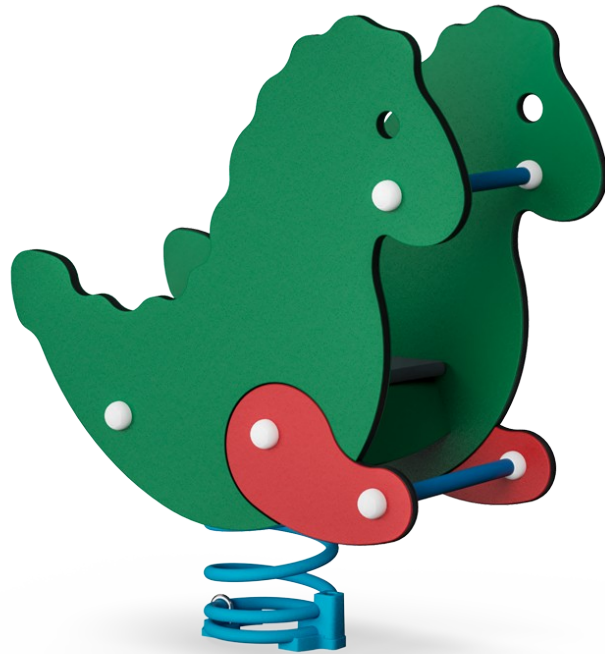


# Crazy Dragon


M113

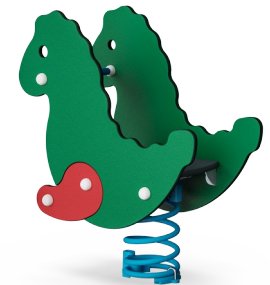


Rocking on the Crazy Dragon is a wildly attractive playground activity that children will return to again and again. Children are able to control the play by moving their bodies to make the Dragon rock. They will feel delighted to have the dragon respond to their movements. The two sides support the seated position, and the foot and handholds provide a stable point

to stem feet and hands from, to create the movement. This is not only fun but is also good for physical and cognitive development. When children begin to learn the connections between their bodies and their movements, they begin to make cognitive connections to a range of body movements and sensations. The dragon theme will be attractive to the child's

imagination and will encourage wonderful physical and imaginative play.

Item no. M11315-01P	
<b>General Product Information</b>	
Dimensions LxWxH	36x75x89 cm
Age group	1+
Play capacity (users)	1
Colour options	



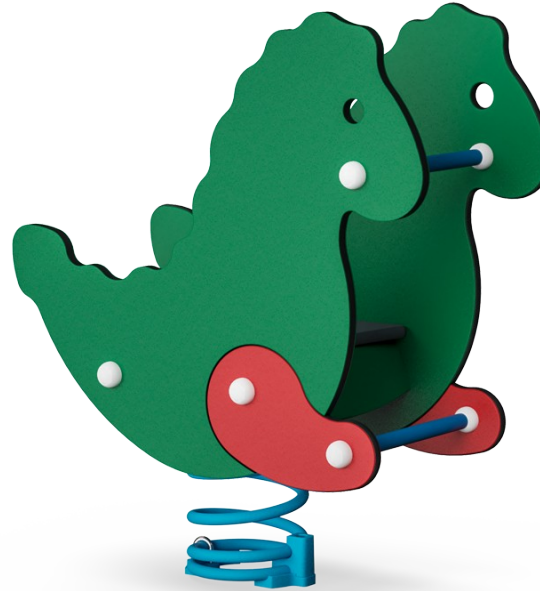
# Crazy Dragon

M113



## Theme

**Cognitive:** suggests a theme and supports dramatic play, which stimulates language and communication skills.



## Foot support

**Physical:** the footrest supports intensive rocking, which stimulates the senses of balance and space, fundamental for managing the world securely.



## Handhold

**Physical:** opens more hold positions and ensures good grip, necessary for rocking intensely which trains hand and arm muscles.



## Rocking spring

**Physical:** response to movements adds to spatial awareness and sense of balance which are fundamental motor skills.

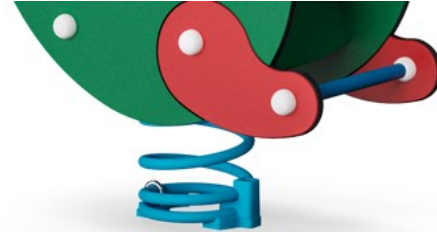
**Cognitive:** trains the understanding of cause and effect: when I move my body, the spring responds with movement.

# Crazy Dragon

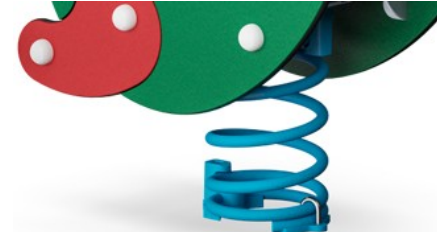
M113



Panels of 19mm EcoCore™. EcoCore™ is a highly durable, eco-friendly material, which is not only recyclable after use but also consists of a core produced from 100% recycled material.



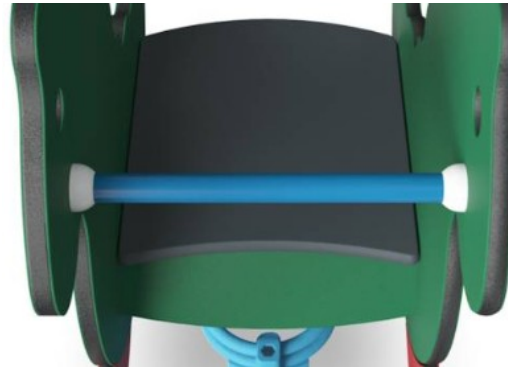
KOMPAN's springs are manufactured from high-quality spring steel. The springs are cleaned by phosphating before being painted with epoxy primer and polyester powder coating. The springs are fixed by unique anti-pinch fittings for maximum safety and longevity.



The springs are fixed by unique anti-pinch fittings for maximum safety and longevity.



Platform and seats are made of HPL with a thickness of 17,8mm with a very high wearing strength and a unique KOMPAN non-skid surface texture.



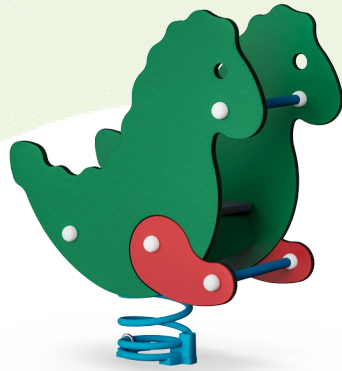
The handle is made of polypropylene PP, which has excellent impact strength and is suitable for hot climates.

Item no. M11315-01P	
Installation Information	
Max. fall height	60 cm
Safety surfacing area	7.4 m <sup>2</sup>
Total installation time	1.0
Excavation volume	0.19 m <sup>3</sup>
Concrete volume	0.00 m <sup>3</sup>
Footing depth (standard)	45 cm
Shipment weight	40 kg
Anchoring options	In-ground ✓ Surface ✓
Warranty Information	
EcoCore HDPE	Lifetime
Galvanised Steel	Lifetime
Spare Parts Guarantee	10 years
Springs	5 years



# Sustainability Data

M113



Cradle to Gate A1-A3	Total CO <sub>2</sub> emission	CO <sub>2</sub> e/kg	Recycled materials
	kg CO <sub>2</sub> e	kg CO <sub>2</sub> e/kg	%
<b>M11315-01P</b>	74.48	2.10	56.95

The overall framework applied for these factors is the Environmental Product Declaration (EPD), which quantifies "environmental information on the life cycle of a product and enable comparisons between products fulfilling the same function" (ISO, 2006). This follows the structure and applies a Life-Cycle Assessment approach to the entire Product stage from raw material through manufacturing (A1-A3))

**Kompan A/S**  
 C.F. Tietgens Boulevard 32C  
 DK-5220 Odense SØ  
 Denmark



## Verification of CO<sub>2</sub> calculation of: Freestanding play equipment



Data version no. 2023-10-05

The CO<sub>2</sub> calculation and data are in compliance with the principles of a carbon footprint impact according to the GHG protocol (Greenhouse Gas Protocol), Scope 3, cradle to gate related to all individual components in the product category: "Freestanding play equipment" represented by item no.: GXY916012-3417.

(Scope 3 emissions include emission sources in the upstream and downstream value chain).

**Date: 30. October 2023 | Valid until: 30. October 2025**

Verified by:

Julie Marie Vejsgaard Larsen, LCA & EPD Consultant

Verification based on report: Validation of CO<sub>2</sub> calculation of 9 categories of Kompan product line, version 1.0, prepared by: Bureau Veritas HSE, Denmark: Julie M. V. Larsen.

**Publication date: 30. October 2023**

By Bureau Veritas HSE  
 www.bureauveritas.dk  
 +45 7731 1000

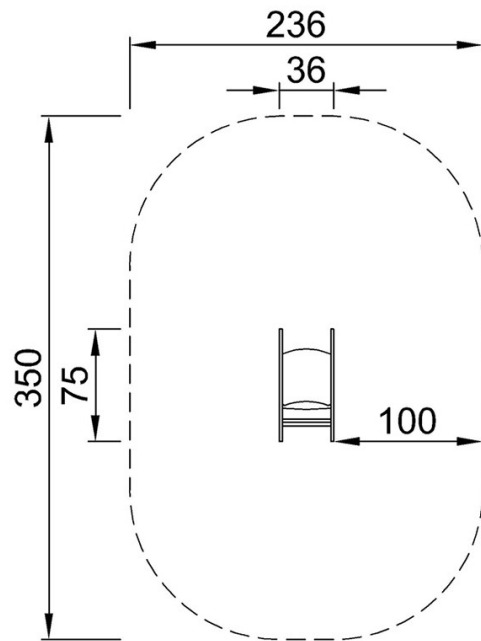


# Crazy Dragon

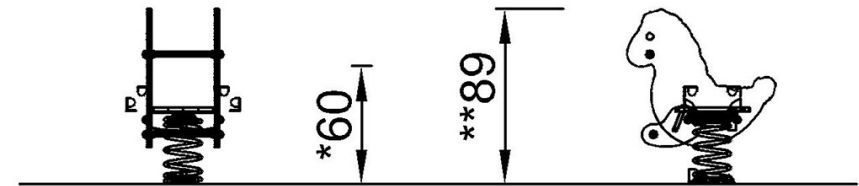
M113

\* Max fall height | \*\* Total height | \*\*\* Safety surfacing area

\* Max fall height | \*\* Total height



M11315P  
\*60cm  
\*\*89cm  
\*\*\*7.4m<sup>2</sup>



M11315

[Click to see TOP VIEW](#)

[Click to see SIDE VIEW](#)