

# Mansulu with Roof

PCE211834






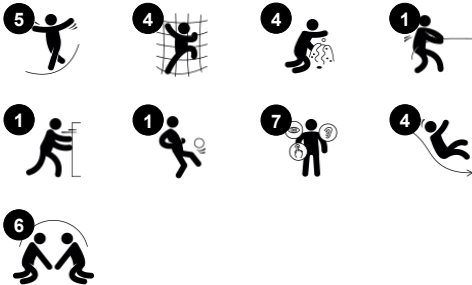
Wow! The Mansulu offers a wealth of varied climbing and sliding, inviting all for a go. With play on all sides, children will enhance their development in all areas, and they will play for longer times, again and again. Physical development is supported by the rich variation of balancing, rotating, climbing, sliding, spinning, and gliding. These all build important

motor skills such as balance and coordination, which benefit children's body confidence and ultimately self-confidence when being able to master new activities with friends. These experiences are also enhanced by the design of the Mansulu which encourages social-emotional skills such as turn-taking and cooperation. With room for many to play, and

break points at either end, the Mansulu supports social skills. The accessible stairway invites all in so that all areas of development through active play are supported.



| Item no.                    |   |
|-----------------------------|---|
| General Product Information |   |
| Dimensions LxWxH            | 27'7"x18'7"x11'9"   |
| Age group                   | 2 - 12  |
| Play capacity (users)       | 21  |
| Color options               |    |



# Mansulu with Roof

PCE211834



## Accessible stairway

**Physical:** climbing the accessible stairway is for all and supports cross coordination as well as arm and leg muscles. For young children, walking stairs and alternating feet is developed. **Social-Emotional:** room for active breaks and adult helpers. An inclusive space.



## Net bridge

**Physical:** children develop their balance, cross coordination and spatial awareness in the open net. **Social-Emotional:** interaction with children outside, socializing. Cooperation and consideration, e.g. when passing others.



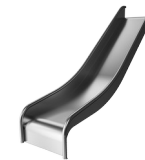
## Climbing pole

**Physical:** cross coordination and muscle strength are trained. **Social-Emotional:** turn-taking and cooperation.



## Score board

**Social-Emotional:** teams can each have a button to measure rounds, wins etc. The buttons support cooperation and teamwork. **Cognitive:** counting and registering support skills such as logical thinking and sequencing.



## Slide

**Physical:** sliding develops spatial awareness and a sense of balance. Furthermore, the core muscles are trained when sitting upright going down. **Social-Emotional:** empathy stimulated by turn-taking.



## Somersault bar

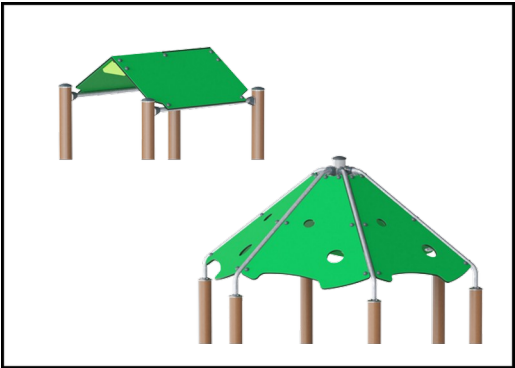
**Physical:** develop balance and core when hanging from knees. Arm, leg and core muscles are developed when climbing up, somersaulting around. Balance and spatial awareness are strengthened. **Social-Emotional:** meeting, socializing and turn-taking when climbing up and down via bar.

# Mansulu with Roof

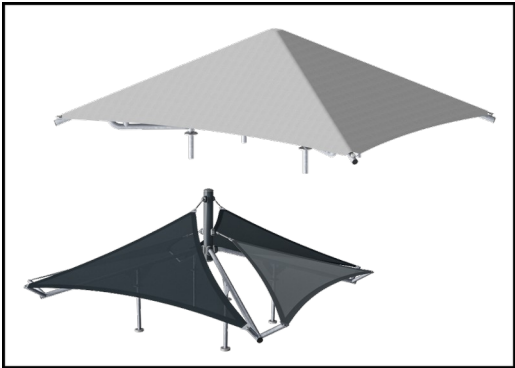
PCE211834



Panels of 19mm EcoCore™. EcoCore™ is a highly durable, eco friendly material, which is not only recyclable after use, but also consists of a core produced from 100% recycled material.



The roofs are made of KOMPAN EcoCore™ panels and supported by hot dip galvanized steel pipes.



Shade sails of commercial 95 high density PE knitted specially for sunshade structures. The sails are treated with UV stabilizers to ensure a long lifetime. The sails are supported by a hot dip galvanized steel frame. Closed sail equipped with an easy take down system.

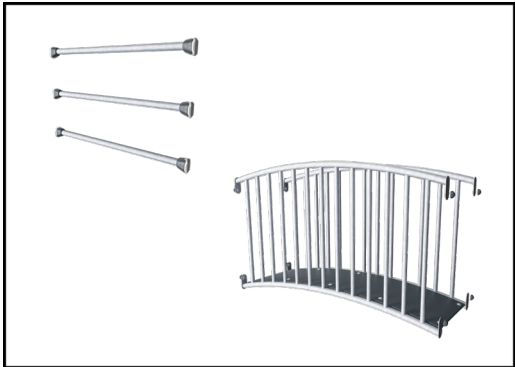
| Item no.                 |                          |
|--------------------------|--------------------------|
| Installation Information |                          |
| Max. fall height         | 3'10"                    |
| Safety surfacing area    | 917ft²                   |
| Total installation time  |                          |
| Excavation volume        |                          |
| Concrete volume          |                          |
| Footing depth (standard) |                          |
| Shipment weight          |                          |
| Anchoring options        | Surface ✓<br>In-ground ✓ |
| Warranty Information     |                          |
| EcoCore HDPE             | Lifetime                 |
| Hollow PE Parts          | 10 Years                 |
| Post                     | 10 Years                 |
| PP Decks                 | 10 Years                 |
| Spare Parts Availability | 10 Years                 |



The main posts are made of high quality pregalvanized steel with powder coated top finish. Post tops are closed with caps of UV stabilized nylon (PA6). The grey colored molded decks are made of 75% post-consumer waste PP material with a non-skid pattern and texture surface. All decks are supported by unique designed low-carbon aluminum profiles with multiple attachment options.



The slides are available in either molded PE in different colors or in full stainless steel AISI304 t= 2mm.



Steel activities are hot dip galvanized and optional with a powder coated top finish.

| Elevated activities | Accessible elevated activities | Accessible ground level activities | Accessible ground level play types |
|---------------------|--------------------------------|------------------------------------|------------------------------------|
| Present             |                                |                                    |                                    |
| Required            |                                |                                    |                                    |

# Sustainability Data

PCE211834



| Cradle to Gate A1-A3 | Total CO <sub>2</sub> emission | CO <sub>2</sub> e/kg    | Recycled materials |
|----------------------|--------------------------------|-------------------------|--------------------|
|                      | kg CO <sub>2</sub> e           | kg CO <sub>2</sub> e/kg | %                  |
|                      |                                |                         |                    |

The overall framework applied for these factors is the Environmental Product Declaration (EPD), which quantifies "environmental information on the life cycle of a product and enable comparisons between products fulfilling the same function" (ISO, 2006). This follows the structure and applies a Life-Cycle Assessment approach to the entire Product stage from raw material through manufacturing (A1-A3))

## Verification of CO<sub>2</sub> calculation of: Play systems



Data version no. 2023-10-05

The CO<sub>2</sub> calculation and data are in compliance with the principles of a carbon footprint impact according to the GHG protocol (Greenhouse Gas Protocol), Scope 3, cradle to gate related to all individual components in the product category: "Play systems" represented by item no.: PCM200321-0950.

(Scope 3 emissions include emission sources in the upstream and downstream value chain).

**Date: 30. October 2023 | Valid until: 30. October 2025**  
**Verified by:**

Julie Marie Vejsgaard Larsen, LCA & EPD Consultant

Verification based on report: Validation of CO<sub>2</sub> calculation of 9 categories of Kompan product line, version 1.0, prepared by: Bureau Veritas HSE, Denmark: Julie M. V. Larsen.

**Publication date: 30. October 2023**

Validation of CO<sub>2</sub> calculation method  
**BUREAU VERITAS**  
HSE Denmark A/S



**By Bureau Veritas HSE**  
www.bureauveritas.dk  
+45 7731 1000

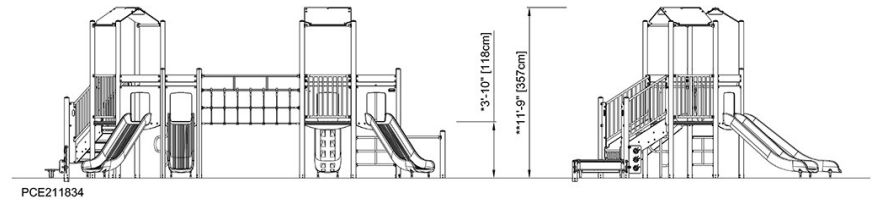
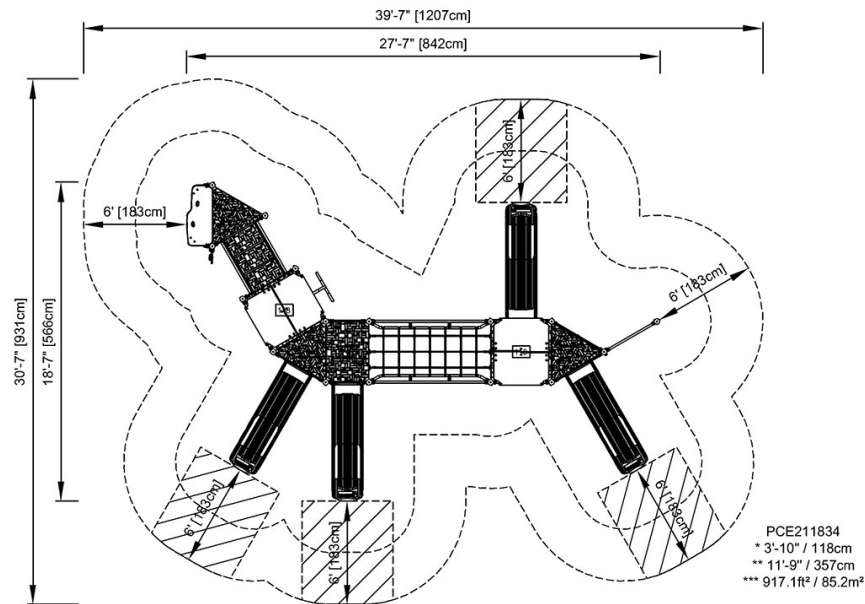


# Mansulu with Roof

PCE211834

\* Max fall height | \*\* Total height | \*\*\* Safety surfacing area

\* Max fall height | \*\* Total height



[Click to see TOP VIEW](#)

[Click to see SIDE VIEW](#)