

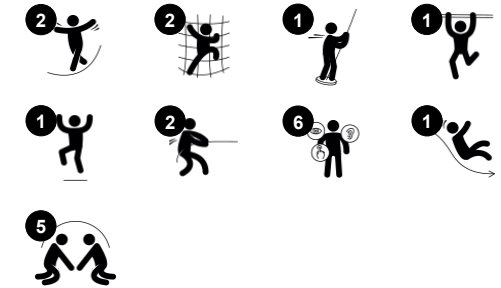
# Double Tower with Spider Net

NRO2003

Item no. NRO2003-1021

## General Product Information

Dimensions LxWxH	648x652x308 cm
Age group	4+
Play capacity (users)	15
Colour options	



The Double Tower with Spider net has lots of climb, slide and glide variations, children will want to try it out again and again. They will train their muscles balance and cross-coordination as they loop the varied play activities. The spider net has partly inclined horizontal rungs, which adds challenge to the climb. It trains the child's cross-coordination,

which again trains cross-modal perception, necessary for reading. The sturdy balance bridge trains the sense of balance, the fundamental motor skill that make children confident when moving and is important for the ability to sit still and concentrate. Apart from being great fun, the slide and glide accesses both train spatial awareness, which again is

important to judging distances. The Double Tower with Spider Net with its play variation stimulates turn-taking, cooperation and consideration in play.



# Double Tower with Spider Net

NRO2003



## Slide

**Physical:** sliding develops spatial awareness and a sense of balance. Furthermore, the core muscles are trained when sitting upright going down. **Social-Emotional:** empathy stimulated by turn-taking.



## Net bridge

**Physical:** children develop spatial awareness in the open net. **Social-Emotional:** interaction with children outside, socializing. Cooperation and consideration, e.g. when passing others.



## Fireman's pole

**Physical:** coordination is supported when going down, as well as arm and core muscles. Landing strengthens bone density, which is built for life in early childhood. **Social-Emotional:** turn-taking and risk-taking.



## Vertical spider net

**Physical:** cross coordination is supported when crawling through, over and across the net. This supports the cooperation of left and right brain half, important for skills such as reading. The core, arm and leg muscles are strengthened. **Social-Emotional:** taking a break together in the net and waiting for others to cross supports social abilities such as cooperation and communication.

# Double Tower with Spider Net

NRO2003



All Organic Robinia products by KOMPAN are made of Robinia wood from sustainable European sources. On request it can be supplied as FSC® Certified (FSC® C004450).



The paint used for coloured components is water based environmentally friendly with excellent UV resistance. The paint is in compliance with EN 71 Part 3.



The stainless-steel slides with one-piece slide bed are made of high-quality stainless-steel AISI 304.



Ropes of UV-stabilized PES rope strands with inner steel cable reinforcement. The polyester yarn is made from +95% post-consumer materials and is inductively melted onto each strand.



The hardware is made of stainless steel or galvanised steel to ensure durable connections with a high corrosion resistance.



The Robinia products are designed with a KOMPAN colour concept with a number of different standard colours. The wood can also be supplied as untreated or with brown painted with a pigment that maintains the wood colour.

Item no. NRO2003-1021

### Installation Information

Max. fall height	207 cm
Safety surfacing area	59.5 m <sup>2</sup>
Total installation time	22.5
Excavation volume	1.84 m <sup>3</sup>
Concrete volume	0.25 m <sup>3</sup>
Footing depth (standard)	100 cm
Shipment weight	1,173 kg
Anchoring options	In-ground ✓

### Warranty Information

Robinia wood	15 years
Ropes & nets	10 years
Spare parts guaranteed	10 years
Stainless steel components	Lifetime
Stainless steel components	Lifetime



# Sustainability Data

NRO2003



Cradle to Gate A1-A3	Total CO <sub>2</sub> emission	CO <sub>2</sub> e/kg	Recycled materials
	kg CO <sub>2</sub> e	kg CO <sub>2</sub> e/kg	%
<b>NRO2003-1021</b>	751.78	0.86	10.11

The overall framework applied for these factors is the Environmental Product Declaration (EPD), which quantifies "environmental information on the life cycle of a product and enable comparisons between products fulfilling the same function" (ISO, 2006). This follows the structure and applies a Life-Cycle Assessment approach to the entire Product stage from raw material through manufacturing (A1-A3))

**Kompan A/S**  
 C.F. Tietgens Boulevard 32C  
 DK-5220 Odense SØ  
 Denmark



## Verification of CO<sub>2</sub> calculation of: Nature play



Data version no. 2023-10-05

The CO<sub>2</sub> calculation and data are in compliance with the principles of a carbon footprint impact according to the GHG protocol (Greenhouse Gas Protocol), Scope 3, cradle to gate related to all individual components in the product category: "Nature play" represented by item no.: NRO409-0621.

(Scope 3 emissions include emission sources in the upstream and downstream value chain).

**Date: 30. October 2023 | Valid until: 30. October 2025**

**Verified by:**

Julie Marie Vejsgaard Larsen, LCA & EPD Consultant

Verification based on report: Validation of CO<sub>2</sub> calculation of 9 categories of Kompan product line, version 1.0, prepared by: Bureau Veritas HSE, Denmark: Julie M. V. Larsen.

**Publication date: 30. October 2023**

**By Bureau Veritas HSE**  
 www.bureauveritas.dk  
 +45 7731 1000

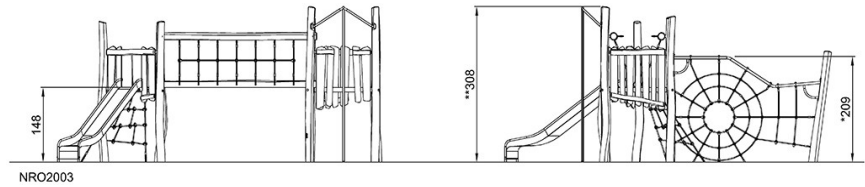
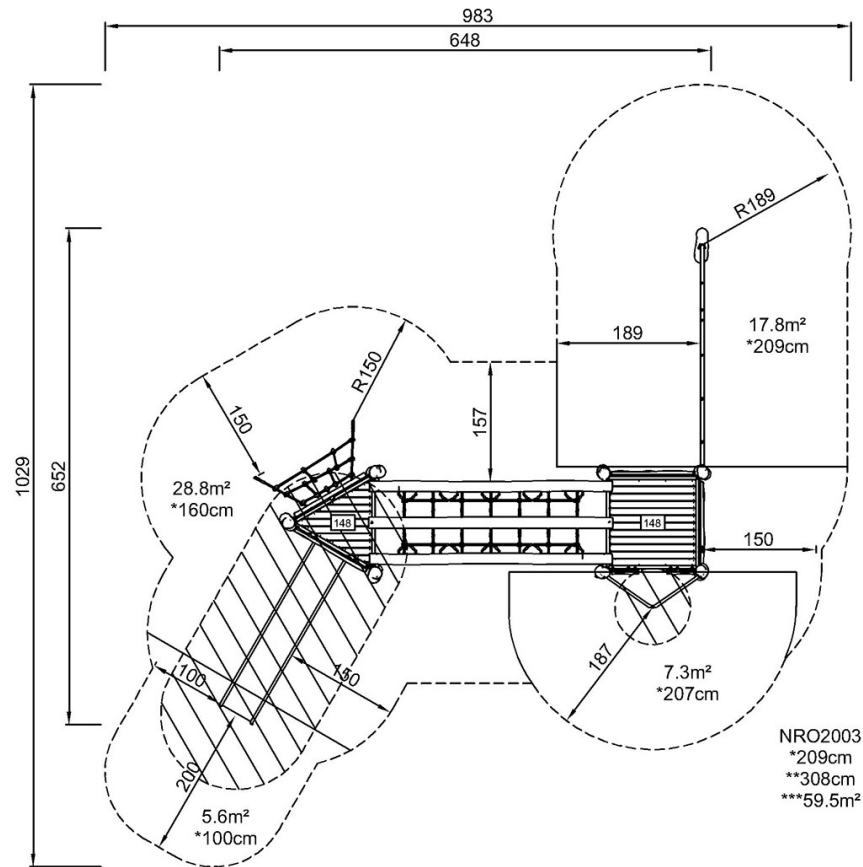


# Double Tower with Spider Net

NRO2003

\* Max fall height | \*\* Total height | \*\*\* Safety surfacing area

\* Max fall height | \*\* Total height



[Click to see TOP VIEW](#)

[Click to see SIDE VIEW](#)